

BLINK SOLAR

100kW grid-connected string inverter



Overview

What are grid-connected inverters?

Grid-connected inverters (GCI) are used to feed power from renewable energy distributed generators into the grid*. They are widely used for this purpose. Repetitive control (RC) enables such inverters to inject high quality fundamental-frequency sinusoidal currents into the grid.

What is a 100 kW solar inverter?

This 100 kW inverter system includes the primary inverter, 2 secondary inverter units (SESU-USRS0NNN4) and the System. The SMA Sunny Highpower Peak3 125-US is a grid-tied 125,000 watt (125 kW) AC output PV solar inverter designed for large-scale ground mount and power plant solar projects.

What is a 10kW on-grid inverter?

A 10kW on-grid inverter is specially designed to add extra electricity to your system. It generates enough electricity to meet your daytime needs and saves excess electricity for later use at nighttime.

What is an on-grid 5kW inverter?

An on-grid 5kw inverter is easy to maintain and converts the direct current to alternating current for powering domestic appliances and even commercial equipment. These solar inverters typically offer high efficiency of around 93% to 96%. Also, the warranty period of these inverters is around 5-10 years.

100kW grid-connected string inverter

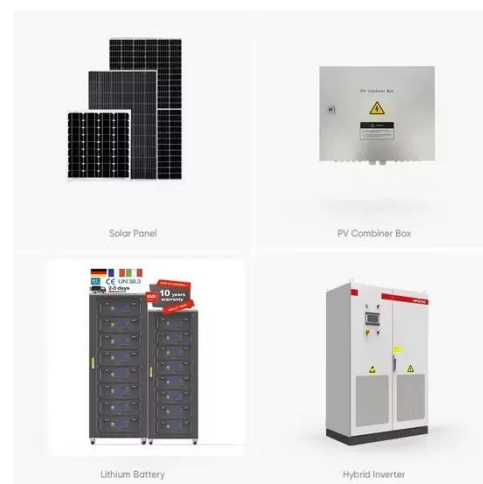


Growatt MAX100-KTL3-X LV string grid-connected inverter, ...

The Growatt MAX 100KTL3 string inverter (MPN MAX100-KTL3-XLV) is a powerful 3-phase grid-connected inverter that is perfectly suited for use in large PV systems. With its rated power of ...

Solis 100kW Three Phase Grid-tie String Inverter

S5-GC (75-125)K-US string inverters are suitable for three-phase commercial rooftop or ground mount projects and work efficiently with 600V or 1000VDC arrays. Solis ...



Solis 80-100kW Three Phase Grid-Tied Inverter



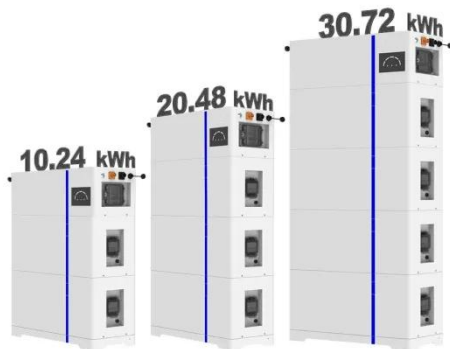
The S6-GC3P (80-100)K07-LV-ND three-phase string inverter is the representative product of the new generation of Solis C&I solutions. With an MPPT current of up to 54A, it is perfect for all ...

100 kW-480 V, 1500 Vdc String Inverters for North America

CPS SCH100KTL-DO/US-480 The CPS 100 kW-480 V three-phase string inverters are designed for ground-mount applications with 480 Vac service voltage. The units are high ...



ESS



100-125kW PV string inverter_Industrial and commercial inverter ...

S5-GC (100-125)K three-phase series string inverter adopt 10 MPPT design to provide a more flexible configuration scheme with a smaller environmental impact rate and higher generation ...

100kw String Inverter, Three Phase Output, 6 MPPT (SUN-100K-G03)

100kw String Inverter, Three Phase Output, 6 MPPT (SUN-100K-G03), Find Details and Price about Grid Tie Inverter on Grid Inverter from 100kw String Inverter, Three Phase ...



SAJ C6 On Grid PV String Inverter , High Efficiency &



Safety

Discover the SAJ C6 series on-grid PV string inverter with up to 98.8% efficiency, 12 MPPTs, advanced safety features, and an IP66 rating for reliable outdoor operation.

Contact Us

For catalog requests, pricing, or partnerships, please contact:

BLINK SOLAR

Phone: +48-22-555-9876

Email: info@blinkartdesign.pl

Website: <https://blinkartdesign.pl>

Scan QR code to visit our website:

