

BLINK SOLAR

120V solar container lithium battery pack is connected in series

Test certification
CE  FC 



Overview

How to connect lithium solar batteries in series?

Connecting Lithium Solar Batteries in Series: To connect lithium solar batteries in series, you simply link the negative pole of one battery to the positive pole of the next battery. This ensures that the same current flows through all the batteries. The total voltage of the series connection is the sum of the individual voltages.

Should you connect lithium solar batteries in series or parallel?

In a parallel connection, the capacity increases while maintaining the same voltage, ideal for longer run times. When setting up lithium solar batteries, understanding how to connect them in series or parallel is crucial for maximizing efficiency and performance. Below, we delve into the specifics of each configuration.

What is the purpose of connecting lithium solar batteries in series?

The main purpose of connecting lithium solar batteries in series is to increase the output voltage. By adding up the voltages of the individual batteries, you can power devices that require higher voltage amounts. For example, connecting two 24V 100Ah batteries in series will result in a combined voltage of 48V while maintaining the same capacity.

Are series and parallel connection of lithium batteries safe?

The series and parallel connection of lithium batteries is a key technology to increase voltage and capacity, but it also contains safety risks. This article will analyze in detail the principles, methods and precautions of series and parallel connection of lithium batteries to help you avoid potential risks and build a battery system correctly.

120V solar container lithium battery pack is connected in series



How to Connect Lithium Solar Batteries in Series & Parallel

Connecting lithium solar batteries in series or parallel is essential for customizing energy storage systems. In a series connection, the voltage increases while the capacity ...

Can a lithium battery pack be used in series?

The ability to customize the voltage by connecting battery packs in series allows manufacturers to design vehicles with different power requirements. So, in conclusion, lithium ...

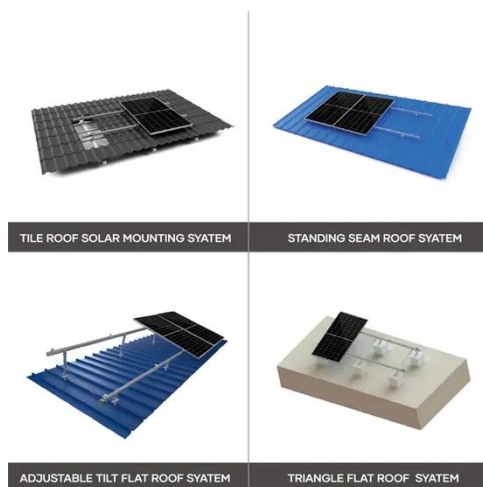


Connecting Lithium Solar Batteries In Series ...

Using lithium batteries in parallel or series will produce different results. So choice of battery depends on different usage scenarios.

Can lithium battery cells be connected in series?

By connecting lithium battery cells in series, you can create a battery pack with the right voltage to store and use the solar energy effectively. Take our 24V 3Ah LFP Solar ...



Connecting Lithium Solar Batteries In Series And In Parallel

Using lithium batteries in parallel or series will produce different results. So choice of battery depends on different usage scenarios.

Batteries in Series vs Parallel: Understand The Differences

For example, the BSLBATT ESS-GRID HV PACK uses 3-12 57.6V 135Ah battery packs in series configuration, and then the groups are connected in parallel to achieve high ...



Batteries in Series vs Parallel: What You Need to Know

Discover the complete guide to solar batteries: series vs parallel connections,



advantages, disadvantages, combo setups, and essential tips.

Everything About Lithium Battery Series & Parallel

Learn how to safely connect lithium batteries in series and parallel. Avoid risks, extend battery life and build reliable power systems with our expert guide.



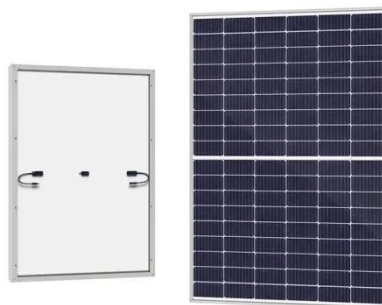
Lithium Solar Batteries Series vs Parallel Connection

When it comes to lithium solar batteries, understanding how to connect them in series and parallel is crucial for achieving the desired performance.

Lithium Series, Parallel and Series and Parallel

Lithium Series, Parallel and Series and Parallel Connections Introduction Lithium

battery banks using batteries with built-in Battery Management Systems (BMS) are created by ...



Can Solar Batteries Be Connected in Series?

Can LiFePO4 Batteries Be Connected in Series? Yes, LiFePO4 batteries (Lithium Iron Phosphate) can also be connected in series to increase the system voltage. This is ...

Contact Us

For catalog requests, pricing, or partnerships, please contact:

BLINK SOLAR

Phone: +48-22-555-9876

Email: info@blinkartdesign.pl

Website: <https://blinkartdesign.pl>

Scan QR code to visit our website:

