

BLINK SOLAR

24v generator 220v inverter

Scooter battery

The battery is installed in the pedal



Built-in battery in car beam

The battery is installed in the car beam



Pack the battery in the box

Thin the battery installation box, replace the battery core without changing the shell



Ebike battery



Overview

What is a 24V inverter?

A 24V inverter is a power conversion device whose main function is to convert 24V DC power into AC power (usually 220V or 110V, depending on the specific model and application). The DC to AC power inverters offer you 110V, 120V, 220V, 230V, or 240V AC energy to charge your electronics or appliances.

What is a 24V 600W inverter?

Inverter for home has overload protection, overheat protection, short circuit protection, and so on. 24V 600w inverter with peak power 1200w, which is a modified sine wave, converts your car battery power to AC power 110/120 Volt or 220/230/240 Volt for options, with a safe charging design to give your device multi-protection.

What are the applications of 24V inverter for home?

Widely applicable: Since its input voltage is 24V, it is suitable for various DC power supply scenarios, making its application range very wide. 24V inverter for home is suitable for a variety of application scenarios, including household, industrial, vehicle, etc.

Which xindun power inverter is best?

Xindun power inverter 24v to 220v 240v 3000w 5000w pure sine wave output, high frequency design, 3000w inverter 24v pure sine wave inverter is your best backup power. Xindun provides dc to ac power inverter customized services for thousands of agents.

24v generator 220v inverter



Best 24V to 220V Power Inverters for Home, RV, and Solar Use

Choosing the right 24V to 220V power inverter is essential for powering your electronics safely and efficiently, whether at home, in your RV, or for off-grid solar systems. ...

12000W / 10000W Pure Sine Wave Inverter , DC 24V / 48V

...

Introducing our Pure Sine Wave Inverter, a high-capacity and reliable power conversion solution that seamlessly transforms 24V or 48V DC power into clean, stable AC ...



Best 24V to 220V Power Inverters for Home, RV, and Solar ...



Choosing the right power inverter 24V to 220V is crucial for efficient energy conversion and reliable power supply in various settings such as homes, RVs, trucks, and off ...

24v Inverter, 24v DC to 120v/240v AC Power Inverter , inverter...

The power inverter can convert 24V DC to 110V/120V or 220V/230V AC.

Equipped with a USB port, the 24V inverter can be used for multi-purpose charging. 24V inverter has multiple safety ...



3000w 24v dc to ac 220v 230v 240v inverter 5000w

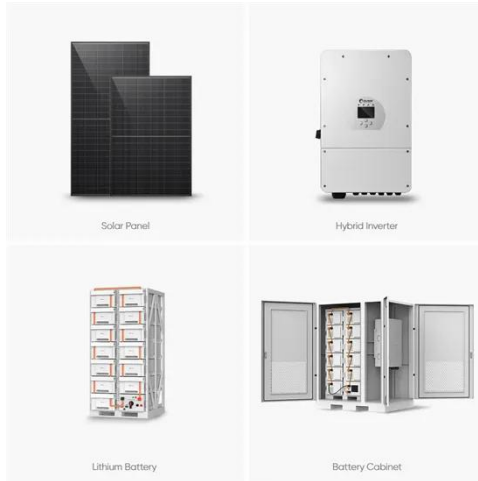
Xindun power inverter 24v to 220v 240v 3000w 5000w pure sine wave output, high frequency design, 3000w inverter 24v pure sine wave inverter is your best backup power.

How to Choose the Best Inverter 24V to 220V for Your Power ...

About Inverter 24V 220V An inverter 24V to 220V converts direct current (DC) from a 24-volt battery system into alternating current (AC) at 220 volts, making it suitable for running ...



12000W / 10000W Pure Sine Wave Inverter , DC 24V / 48V



to AC 220V

Introducing our Pure Sine Wave Inverter, a high-capacity and reliable power conversion solution that seamlessly transforms 24V or 48V DC power into clean, stable AC ...

24V DC to 220V AC Modified Sine Wave Power Inverter

Power inverter converts 12V or 24V DC from battery or car lighter to AC 110V or 220V household power, with USB port and AC outlet for fast charging the electronic devices.



Best Power Inverters 24V to 220V for Reliable AC Conversion

Choosing the best power inverter 24V to 220V is essential for efficiently converting DC power from batteries or solar systems into usable AC power for your devices. Whether you ...

Contact Us

For catalog requests, pricing, or partnerships, please contact:

BLINK SOLAR

Phone: +48-22-555-9876

Email: info@blinkartdesign.pl

Website: <https://blinkartdesign.pl>

Scan QR code to visit our website:

