

BLINK SOLAR

80 square meters of solar panels



Overview

How much energy does a solar panel produce per square meter?

Given Egypt's high solar irradiance levels, which can reach up to 2200 kWh/m² annually, the potential power output per square meter of a solar panel can be quite significant. For a solar panel with an efficiency of 18%, this translates to an annual energy production of about 396 kWh/m². 1. Choosing the Right Panel.

How to calculate solar power per square meter?

You can calculate the solar power per square meter with the following calculators. 1. For Off-Grid It is the system that generates its own power with panels and a battery bank. In the off-grid calculator select from the option, shed cabin, house, or portable. Next, select the days of full autonomy, etc. 2. Solar Savings Calculator.

Why is solar energy per square meter important?

Measuring solar energy per square meter helps evaluate electricity generation capabilities and is crucial for assessing solar panels' effectiveness and solar farms' ability to harness sunlight and reduce fossil fuel dependence, which contributes to climate change. What is Solar Energy Per Square Meter?

.

How much electricity does a thin film solar panel produce?

Thin-Film Solar Panels – 10-12% efficiency, producing 100-120W per square metre. To put this into perspective, if you install 10 square metres of monocrystalline solar panels, you could generate up to 2,200 watts (2.2 kW) of electricity, sufficient to power basic household appliances.

80 square meters of solar panels



Solar Panel Output Per Square Meter

Discover how much electricity solar panels generate per square meter, explore efficiency factors, technology comparisons, and future innovations in photovoltaic energy.

Solar Panel Wattage Explained: How Many ...

Confused about solar panel wattage? Learn how many watts you need, how solar output works, and how to calculate the right solar ...



Solar Power per Square Meter Calculator

Solar Panel Output CalculatorSolar Panels Kwh CalculatorSolar Panel Area Per KwWattage is the output of solar panelsthat is calculated by multiplying the volts by amps. Here, the amount of the force of the electricity is represented by volts. The aggregate amount of energy used is expressed in amps (amperes). Output ratings on most solar

panels range between 250 watts to 400 watts. See more on energy theory solvability

Solar Power Per Square Meter Calculator - Free Tool 2025

Your roof's orientation, local climate, shading, and even the dust on your panels can slash that output by 30-50%. This comprehensive guide reveals exactly how to calculate your solar ...

Solar Energy Per Square Meter: How Much ...

Solar energy per square meter refers to the amount of solar radiation impacting a specific area, measured in kilowatts per square ...



Solar Panels Sizes and Weights (All Sizes)

72-cell solar panels that are 28 kilograms and measure 2.03 meters long by 1.01 meters wide have an area of 2.05 square meters. ...



How Much Power Can One Solar

Panel ...

Capacity The capacity of a solar panel is the amount of electricity it can produce in a day. The higher the capacity, the more electricity the ...



Solar Rooftop Potential

in 2016, there are over 8 billion square meters of rooftops on which solar panels could be installed in the United States, representing ...

How many square meters of solar panels does a family need?

Discover how many square meters of solar panels are needed to cover the energy needs of a four-person family in Europe. Learn more.



Total Area Required for Solar Panel Installation Calculator

Calculate the total area needed for your solar panel installation quickly and



accurately with our easy-to-use solar panel area calculator.

Solar Panel Power Per Square Meter: How to ...

Final Words Calculating the solar panel power per square meter is an essential step in understanding the efficiency and potential of ...



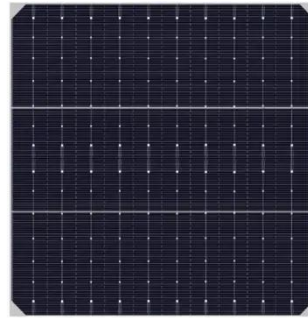
Solar Panel Output Per Square Meter

Discover how much electricity solar panels generate per square meter, explore efficiency factors, technology comparisons, and ...

How much electricity does a 80 square meter solar panel ...

The issue of electricity production from solar panels, particularly those of an 80

square meter capacity, hinges on numerous interconnected elements. Factors such as ...

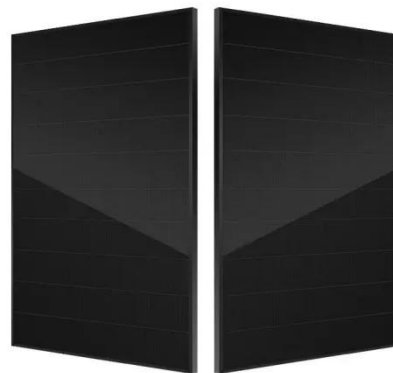


Solar Power Per Square Meter Calculator

Solar Power Per Square Meter Calculator measure for your roof. Free calculator with 25-year ROI projections, net metering analysis & system optimization.

80 square meters of rooftop photovoltaic panels installed

How much does a rooftop solar panel weigh? whether a rooftop can handle a solar panel installation. On average, according to solar experts, the mounting equipment and solar panels ...



Solar Energy Generation Per Square Metre: A Complete Guide

With the rising demand for renewable energy, solar panels for home have



become a popular choice for homeowners looking to reduce electricity bills and contribute to a ...

80 square meters of solar panels

80 square meters of solar panels What is solar panel watts per square meter (W/M)? Solar panel watts per square meter (W/m) measures the power output of a solar panel ...



Calculation of total area required for solar panel installation

This is the physical surface area of a single solar panel, generally provided in square meters (m^2) or square feet (ft^2). Efficiency and installation constraints are directly ...



Solar Energy Generation Per Square Metre: A ...

With the rising demand for renewable energy, solar panels for home have

become a popular choice for homeowners looking to reduce ...



Solar Power per Square Meter Calculator

Solar Power per Square Meter Calculator: It's used to calculate the amount of solar intensity received by the solar panels.

How to calculate the surface area required by solar panels

Panel Dimensions: Standard solar panels are typically around 1.7 meters by 1 meter (1.7m²). Total Surface Area: Multiply the number of panels by the area of one panel.



Total Area Required for Solar Panel ...

Calculate the total area needed for your solar panel installation quickly and



accurately with our easy-to-use solar panel area ...

Solar Energy Per Square Meter: How Much Power Can You ...

Solar energy per square meter refers to the amount of solar radiation impacting a specific area, measured in kilowatts per square meter (kW/m^2). This measurement is a key ...



Solar Power Per Square Meter Calculator

Your roof's orientation, local climate, shading, and even the dust on your panels can slash that output by 30-50%. This comprehensive guide reveals exactly how to calculate your solar ...

How much electricity does a 80 square meter ...

The issue of electricity production from solar panels, particularly those of an 80

square meter capacity, hinges on numerous ...



Solar Panel Power Per Square Meter: How to Calculate ...

Final Words Calculating the solar panel power per square meter is an essential step in understanding the efficiency and potential of solar energy systems. By considering factors ...

How many square meters of solar panels ...

Discover how many square meters of solar panels are needed to cover the energy needs of a four-person family in Europe. Learn more.



Contact Us

For catalog requests, pricing, or partnerships, please contact:

BLINK SOLAR

Phone: +48-22-555-9876

Email: info@blinkartdesign.pl

Website: <https://blinkartdesign.pl>

Scan QR code to visit our website:

