

**BLINK SOLAR**

# **Acs800 inverter cabinet maximum current**



## Overview

---

Where can I find a manual for my ABB acs800-37 drive?

Document library on the Internet on the inside of the back cover. For manuals not available in the Document library, contact your local ABB representative. Drive hardware manuals and guides ACS800-37 Drives (55 to 2700 kW / 75 to 3000 hp) Hardware Manual 3AFE68557925 Drive (inverter) firmware manuals and guides.

What makes ABB ACS800 different?

ABB's extensive application and product know-how is at your service. The ABB ACS800 liquid-cooled series has a number of unique features as standard, and which are not available in previous generations of ABB drives, nor in existing competitors' drives.

Where can I find a manual for the acs800-37 drive?

ACS800 Hardware Manual ACS800-37 Drives (55 to 2700 kW / 75 to 3000 hp)  
List of related manuals You can find manuals and other product documents in PDF format on the Internet. See section Document library on the Internet on the inside of the back cover. For manuals not available in the Document library, contact your local ABB representative.

What is ACS800 output voltage?

As with all frequency converters employing the most modern IGBT inverter technology, the ACS800 output comprises - regardless of output frequency - pulses of approximately 1.35 times the mains network voltage with a very short rise time. The voltage can be almost double at the motor terminals, depending on motor cable properties.

## Acs800 inverter cabinet maximum current

---



### ABB industrial drives

ABB industrial drives ABB industrial drives are designed for industrial applications, and especially for applications in process industries such as the pulp & paper, metals, mining, ...

### ABB ACS800 MANUAL Pdf Download

View and Download ABB ACS800 manual online. Converter modules with electrolytic DC capacitors in the DC link. ACS800 control unit pdf manual ...



### ACS800 Manual , ABB

HW Manual ACS800-104 INU/EN; HW Manual ACS800-104 Inverter unit; Hardware manuals/EN Data Sheet Downloads Categories

## EN / ACS800-17 Drives (55 to 2500 kW / 75 to 2800 hp) ...

Safety options for ACS800 cabinet-installed drives (+Q950, 3AUA0000026238 +Q951, +Q952, +Q963, +Q964, +Q967 and +Q968)  
Wiring, start-up and operation instructions ...



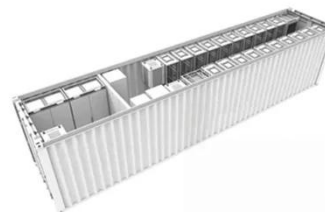
## EN / ACS800-07 (+V992) drives (500-2800 kW) hardware ...



Option manuals Safety options for ACS800 cabinet-installed drives (+Q950, +Q951, +Q952, 3AUA0000026238 +Q963, +Q964, +Q967 and +Q968),  
Wiring, start-up and ...

## ABB ACS800 AC Variable Frequency Drive :: Specifications

U<sub>1</sub> = Input Voltage U<sub>N</sub> = Nominal Motor Voltage f<sub>N</sub> = Nominal Motor Frequency I<sub>2N</sub> = Nominal Current - Normal Duty I<sub>Max</sub> = Maximum Current for Peak Overload S<sub>N</sub> = ...



## EN / ACS800 Standard Control Program Firmware ...

The same control panel is used with all ACS800 series drives, so the instructions

given apply to all ACS800 types. The display examples shown are based on the Standard ...



## ABB ACS800 INVERTER HARDWARE MANUAL ...

View and Download ABB ACS800 hardware manual online. 1.5 to 2000 kW Inverter Modules. ACS800 inverter pdf manual download. Also for: ...



## ABB ACS800 INVERTER HARDWARE MANUAL , ManualsLib

View and Download ABB ACS800 hardware manual online. 1.5 to 2000 kW Inverter Modules. ACS800 inverter pdf manual download. Also for: Acs800-104.



## EN / ACS800-07 (+V992) drives (500-2800 kW) hardware ...

If one of the parallel-connected supply or inverter modules must be taken out of

the cabinet for service, it is possible to continue operation using the remaining modules at reduced ...



### **ABB ACS800 HARDWARE MANUAL Pdf ...**

View and Download ABB ACS800 hardware manual online. ACS800 dc drives pdf manual download. Also for: Acs800-04, Acs800-04m, Acs800-u4.

### **ACS800, multidrives, 1.1 to 5600 kW Catalog**

Drive units Inverters have built-in capacitors for smoothing the voltage of the DC busbars. The electrical connection to the common DC busbar is fuse protected. However, an ...



### **EN / ACS800-37 Drives 55 to 2700 kW (75 to 3000 hp) ...**

Safety options for ACS800 cabinet-installed drives (+Q950, +Q951, +Q952,

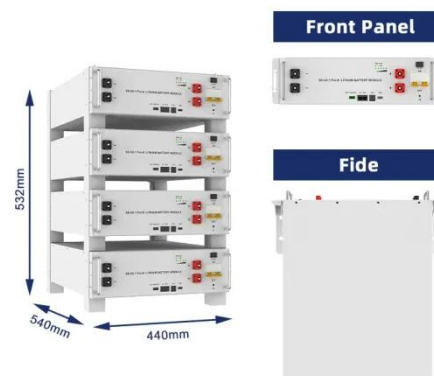


+Q963, +Q964, +Q967 and +Q968)  
Wiring, start-up and operation  
instructions ...



## EN / ACS800-04/U4 Drive Modules Hardware Manual ...

ACS800-04/04M/U4 Cabinet Installation  
(45 to 560 kW, 60 to 600 3AFE68360323  
hp) Converter module capacitor  
reforming instructions ACS800-01, -U1,  
-04 frames R2-R6 ...



## Acs800 inverter cabinet maximum current

The ACS800-37 cabinet-built drive is a  
low harmonic solution in the power  
range of 37 kW up to 2700 kW. It offers a  
unique harmonics solution that is  
incorporated into the drive.

## ABB ACS800 MANUAL Pdf Download , ManualsLib

View and Download ABB ACS800 manual  
online. Converter modules with

electrolytic DC capacitors in the DC link.  
ACS800 control unit pdf manual  
download. Also for



### **EN / ACS800-07/U7 Drives (45 to 560 kW, 50 to 600 hp) ...**

Option manuals and guides Safety options for ACS800 cabinet-installed drives (+Q950, +Q951, +Q952, 3AUA0000026238 +Q963, +Q964, +Q967 and +Q968) Wiring, start ...

## **Contact Us**

For catalog requests, pricing, or partnerships, please contact:

### **BLINK SOLAR**

Phone: +48-22-555-9876

Email: [info@blinkartdesign.pl](mailto:info@blinkartdesign.pl)

Website: <https://blinkartdesign.pl>

*Scan QR code to visit our website:*



