

**BLINK SOLAR**

# Are solar panels heavier than glass





## Overview

---

"A 60-cell solar panel carries about 18-22kg, while equivalent glass sheets weigh 12-15kg," reports the National Renewable Energy Laboratory (NREL) 2023 study. Are glass solar panels strong?

Unlike other materials used to make solar panels, glass solar panels, specifically tempered glass, are strong and can withstand natural elements more efficiently. Tempered glass is up to six times stronger than typical plate glass, so make sure to research the type of glass and its durability.

Are glass-glass solar panels better than glass-foil solar panels?

Considering that double-glass PV modules use glass on both sides, the cost of glass alone doubles if compared to glass-foil solar panels. A benefit of most glass-glass solar panels is that they are frameless, which reduces their price. The weight of glass-glass PV modules with 2.5mm glass on each side is around 50 pounds (23 kg).

Are all-glass solar panels better than plastic solar panels?

However, an all-glass solar panel does not take as much effort to generate energy as a plastic solar panel, and because the glass absorbs the sun's rays and stores the heat better than other materials, the cost to generate power is lower than plastic.

How much does a glass-glass solar panel weigh?

A benefit of most glass-glass solar panels is that they are frameless, which reduces their price. The weight of glass-glass PV modules with 2.5mm glass on each side is around 50 pounds (23 kg). Standard glass-foil solar panels weigh around 40 pounds (18 kg).



## Are solar panels heavier than glass

---



### WHY DO SOLAR PANELS HAVE A GLASS CASING?

Why are solar panels packaged with glass? Therefore, solar cells are usually packaged with solar glass through EVA and back sheet. The function of solar glass in solar panels is to protect ...

## Are Photovoltaic Panels Heavier Than Glass Key Factors ...

Material Showdown: Solar Panels vs. Standard Glass Let's cut through the glare - typical photovoltaic panels weigh 40-50% more than standard architectural glass of comparable size.



### Why are solar panels heavy? , NenPower

When panels are heavier, analyzing load-bearing capacity becomes essential, particularly for rooftop installations. Each structure has its own limits, and heavier solar panels ...





## Transmittance and weight of solar panels with ...

Hybrid structures: Combining glass with transparent solar cells for double-duty surfaces For solar panel suppliers investing in R& D, this ...

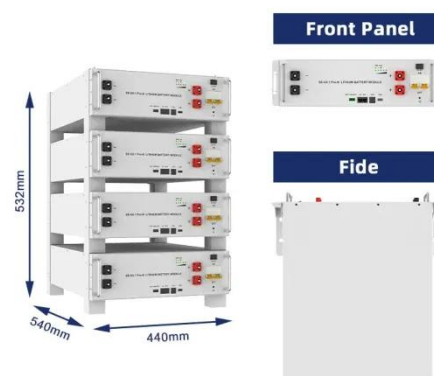


## Are photovoltaic panels heavier than glass Why

How much do solar panels weigh?  
Residential solar panels usually have 60 cells and weigh about 40 pounds each.  
Commercial solar panels are slightly larger, usually around 72 cells, and weigh ...

## Are photovoltaic panels heavier than glass Why

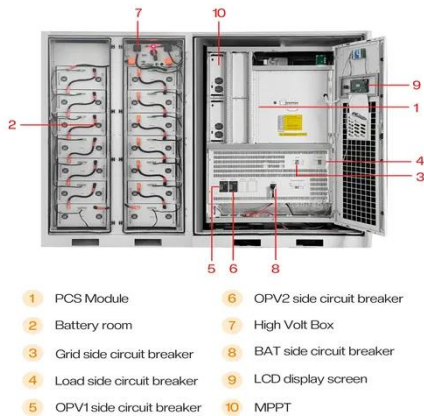
Are photovoltaic panels heavier than glass Why What are the advantages of PV glass in solar panel design?  
Incorporating PV glass in solar panel design offers numerous advantages: ...



## How Much Does a Solar Panel Weigh? Solar Panel Size, ...

2. Materials used in the manufacture of





solar panels: the materials used in the manufacture of solar cells (relatively light): monocrystalline, polycrystalline, and thin-film, and ...

## Are photovoltaic panels heavier than glass Why

How much do solar panels weigh?  
Residential solar panels usually have 60 cells and weigh about 40 pounds each.  
Commercial solar panels are slightly larger, usually around 72 cells, and weigh ...



## Glass-Glass vs Mono-Glass Solar Panels: Solving Your Solar ...

Need help choosing between mono-glass ABC solar panels and double-glass panels? Compare weight, power output, fire ratings, and costs. Find which design fits your ...



## How Much Do Solar Panels Weigh?



What makes solar panels so heavy?  
Solar cells - the part of the solar panel which generates electricity - are relatively light, weighing only a few hundred grams each. The majority of the ...



## How Much Do Solar Panels Weigh?

How Much Do Residential Solar Panels weigh? How Much Do Commercial Solar Panels weigh? What Makes Solar Panels So Heavy? Can My Roof Support A Solar Panel Installation? Considering Installing Solar Panels? Solar cells - the part of the solar panel which generates electricity - are relatively light, weighing only a few hundred grams each. The majority of the weight of the panel actually comes from the aluminum framing and tempered glass used to construct the solar panel. While tempered glass is heavier than normal glass, it is the industry standard for See more on [solarreviews](#) [solarpanelempire](#)

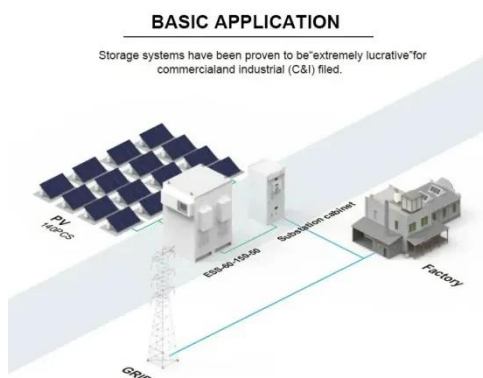
## how heavy are typical solar panels - Solar Panel Empire

Frameless/Glass-on-Glass Panels: While aesthetically pleasing and highly durable, the use of two layers of tempered glass often makes these modules heavier than framed counterparts, ...



## How much heavier is a double-glass photovoltaic panel ...

Transparency: The dual-glass design can lead to slightly reduced light transmission compared to single-sided glass panels. However, advancements in glass technology have mitigated this ...



## Transmittance and weight of solar panels with different thickness of glass

Hybrid structures: Combining glass with transparent solar cells for double-duty surfaces. For solar panel suppliers investing in R&D, this could mean a complete reimagining ...

## Are photovoltaic panels heavier than glass Why

Key takeaways. Residential solar panels usually have 60 cells and weigh about 40 pounds each. Commercial solar panels are slightly larger, usually around 72 cells, and weigh around 50 ...



## ARE GLASS PANELS HEAVIER THAN SINGLE GLASS?





Huawei Thailand photovoltaic solar panels Bangkok, - Amid Thailand's abundant solar resources, increasing environmental awareness, and the maturity of ICT-integrated ...

## Are Photovoltaic Panels Heavier Than Glass Key Factors ...

Material Showdown: Solar Panels vs. Standard Glass Let's cut through the glare - typical photovoltaic panels weigh 40-50% more than standard architectural glass of comparable size. ...



## how heavy are typical solar panels

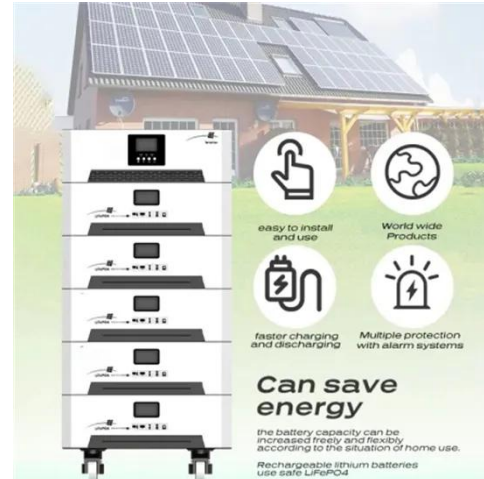
Frameless/Glass-on-Glass Panels: While aesthetically pleasing and highly durable, the use of two layers of tempered glass often makes these modules heavier than framed counterparts, ...

## Are photovoltaic panels heavier or lighter than glass



As the photovoltaic (PV) industry continues to evolve, advancements in Are photovoltaic panels heavier or lighter than glass have become critical to optimizing the utilization of renewable

...



## Are photovoltaic panels heavier than glass Why

Glass Glass Solar Panels It is true that double glass panels are heavier than glass-foil panels, but that doesn't affect safety or functionality at all. On the contrary, double glass panels provide ...

## Contact Us

For catalog requests, pricing, or partnerships, please contact:

### **BLINK SOLAR**

Phone: +48-22-555-9876

Email: [info@blinkartdesign.pl](mailto:info@blinkartdesign.pl)

Website: <https://blinkartdesign.pl>

Scan QR code to visit our website:



