

**BLINK SOLAR**

# **BMS battery pack parallel connection**



## Overview

---

Can a BMS connect a battery in parallel?

I know that a BMS can manage the connection within the three packs connected in series, but what about the four batteries connected in parallel within each set. For the most part, putting cells in parallel just makes them behave like a bigger single cell.

What is a pack parallel BMS?

The PACK parallel BMS is a battery management system that consists of two parts: the BMS and the parallel current limiting module. Both parts must be present in each PACK that is connected in parallel. There are two methods for wiring the PACK parallel BMS: Method 1: This method involves connecting the parallel BMS module's P-wire to the BMS first.

How to wire a parallel BMS module?

There are two methods for wiring the PACK parallel BMS: Method 1: This method involves connecting the parallel BMS module's P-wire to the BMS first. The common port should be connected to the BMS P-wire and the separate port should be connected to the BMS C-wire. Then connect B- and B+ in turn.

How do you connect a BMS to a battery pack?

Connecting the BMS: B- Terminal: Connect to the main negative (-) terminal of the battery pack. B+ Terminal: Often already connected internally; check your BMS specifications. B1 (or B0): Connect to the most negative point (first cell's negative terminal). B2, B3, . : Connect sequentially to the positive terminals of each cell in series.

## BMS battery pack parallel connection

---

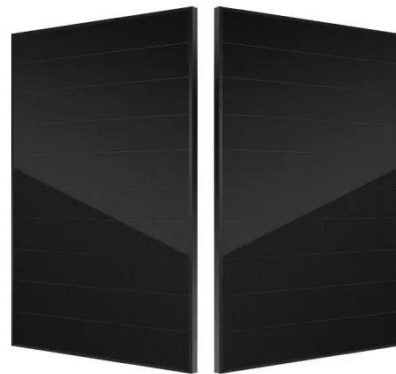


### Lithium Series, Parallel and Series and Parallel

Lithium Series, Parallel and Series and Parallel Connections Introduction Lithium battery banks using batteries with built-in Battery Management Systems (BMS) are created by ...

## Lithium Battery Pack

Let's assume I am going to build a Li-ion battery pack with 12 18650s, where I connect four cells together in parallel and then the three sets of four in series. My ...

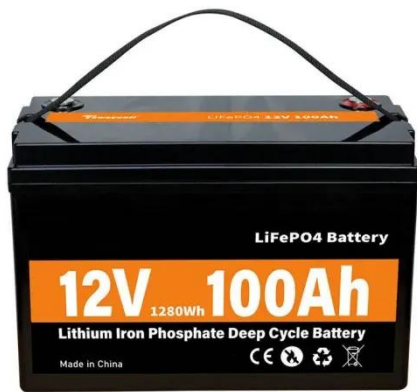


### How to Balance Lithium Batteries with Parallel BMS?

A parallel BMS regulates the current flow between 2 or multiple batteries connected in parallel, learn how it works and how to connect it.

## Why is Parallel BMS Essential for Efficient Battery ...

The Role of Parallel BMS in Battery Management Systems In the realm of battery management systems (BMS), the role of a Parallel BMS is becoming increasingly vital for ...



## Parallel Battery Packs

Parallel then Series or Series then Parallel How should you connect battery cells together: Parallel then Series or Series then Parallel? What are the benefits and what are the ...

## Lithium Series, Parallel and Series and Parallel

Introduction1. What is a BMS? Why do you need a BMS in your lithium battery?The lithium battery BMS, its design and primary purpose:2. How to connect lithium batteries in series4. How to charge lithium batteries in parallel4.1 Resistance is the enemy4.2 How to charge lithium batteries in parallel - from bad to best designsLithium battery banks using batteries with built-in Battery Management Systems (BMS) are created by connecting two or more batteries together to support a single application. Connecting multiple lithium



batteries into a string of batteries allows us to build a battery bank with the potential to operate at an increased voltage, or with increased capacity. See more on assets.discoverbatteryenergy-x

## Battery Packs BMS in Parallel Wiring - EnergyX

The BMS monitors the total voltage and temperature of each battery pack, ensuring balanced charging and discharging across the packs. The advantages of this wiring ...

### FLEXIBLE SETTING OF MULTIPLE WORKING MODES



## How to Assemble a Battery Pack with a BMS Module , Step ...

Learn how to safely assemble a battery pack with a BMS module. Our step-by-step guide covers materials needed, safety precautions, detailed assembly instructions, and testing ...

## Daily BMS wiring diagram of Battery Pack in Parallel

The PACK parallel BMS is a battery management system that consists of two parts: the BMS and the parallel current limiting module. Both parts must be present in each PACK ...





## How to Balance Lithium Batteries with Parallel ...

A parallel BMS regulates the current flow between 2 or multiple batteries connected in parallel, learn how it works and how to connect it.

### Run two (almost) same battery packs in parallel

You're missing an option 4: use a dedicated, split BMS. In a perfect world, two identical batteries connected in parallel would see the same current and would always sit at ...



## Battery Packs BMS in Parallel Wiring

The BMS monitors the total voltage and temperature of each battery pack, ensuring balanced charging and discharging across the packs. The advantages of this wiring ...

## Contact Us

For catalog requests, pricing, or partnerships, please contact:

**BLINK SOLAR**

Phone: +48-22-555-9876

Email: [info@blinkartdesign.pl](mailto:info@blinkartdesign.pl)

Website: <https://blinkartdesign.pl>

*Scan QR code to visit our website:*

