

**BLINK SOLAR**

# **Base station battery instantaneous discharge current**



## Overview

---

What type of battery should be discharged?

1.2V NiMH battery: C/5 discharge is recommended. 1.5V rechargeable Li-ion battery: The discharge rate should be selected according to the battery size. It is recommended to discharge AA size at 0.5A and AAA size at 0.2-0.3A.

What is a standard discharge rate for a lithium ion battery?

For 3.6/3.7V lithium-ion batteries, the International Electrotechnical Commission (IEC) specifies a “standard discharge rate”- 0.2C. This means that at  $20\pm5^{\circ}\text{C}$  and with a cutoff voltage of 2.5V, discharging at 0.2C will measure the actual capacity of the battery.

What temperature should a battery be discharged at?

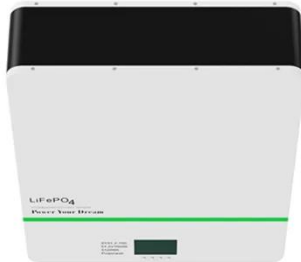
This means that at  $20\pm5^{\circ}\text{C}$  and with a cutoff voltage of 2.5V, discharging at 0.2C will measure the actual capacity of the battery. Taking a 18650 3500mAh battery as an example, the recommended discharge current can be calculated as :.

How does discharge rate affect battery capacity testing?

The discharge rate directly affects the battery capacity testing and overall performance. A well-known battery reviewer, Admiral134, tested the capacity of the new XTAR 18650 3500mAh battery at different discharge rates. The results showed that as the discharge rate increased from 0.2C to 2.85C, the battery capacity gradually decreased.

## Base station battery instantaneous discharge current

---



### Typical Li-ion battery response under a pulse ...

Download scientific diagram , Typical Li-ion battery response under a pulse discharge current. from publication: A Review of Modeling, Management, ...

### Achieving Highly Accurate Full-scale Charge and ...

Battery-formation testing requires multiple charge and discharge cycles; achieving high accuracy during this process is necessary to maximize battery life and storage capacity. ...



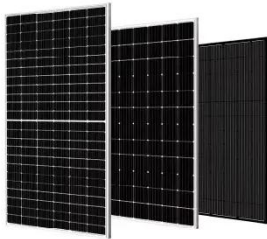
### Discharge Behavior of Lithium Batteries , SpringerLink

A critical aspect of using Li-ion batteries safely and effectively is to understand their electrical behavior during charge/discharge cycles [4]. This work focuses on the discharge ...



## How to Choose the Right Discharge Rate for ...

When testing battery capacity, the discharge rate (or discharge current) is a key factor that greatly affects the results. Different ...



## Typical Li-ion battery response under a pulse discharge current.

Download scientific diagram , Typical Li-ion battery response under a pulse discharge current. from publication: A Review of Modeling, Management, and Applications of Grid-Connected Li ...

## 5G Base Station Lithium Battery: Capacity and Discharge ...

Typical Values: 5G Macro Station: Continuous discharge up to 500A. Urban Small Cell: Peak discharge up to 150A. EverExceed's high-rate discharge LiFePO<sub>4</sub> batteries are ...



## What Factors Influence Lithium Battery Charge and Discharge ...

Lithium batteries are ubiquitous--from smartphones and laptops to power

stations and electric vehicles. But in real-world conditions, they rarely reach ideal efficiency. ...



---

### **A pulsed discharge system with an intermitting partial ...**

The partial charge current, duration, and minimum/maximum cell voltage achieved during the partial phase are investigated, highlighting the effects on the overall battery ...



---

### **Lithium Battery Discharge Current Guide , Himax**

By knowing both continuous and instantaneous limits, you can design protection systems and select appropriate Battery Management Systems (BMS) to prevent thermal ...



---

### **What is the discharge current of the base station lithium ...**

The discharge current is the amount of current drawn from the battery during

use, measured in amperes (A). Li-ion cells can handle different discharge rates, but drawing a high ...

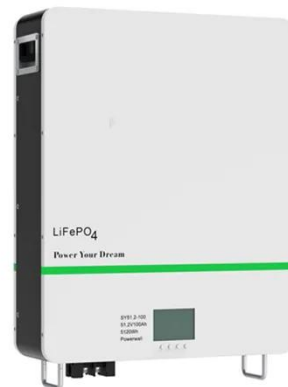


### **Base station battery instantaneous discharge current**

Constant current discharge is the discharge of the same discharge current, but the battery voltage continues to drop, so the power continues to drop. Figure 5 is the voltage and current curve of ...

### **How to Choose the Right Discharge Rate for Battery ...**

When testing battery capacity, the discharge rate (or discharge current) is a key factor that greatly affects the results. Different brands of battery chargers set various discharge ...



## **Contact Us**

For catalog requests, pricing, or partnerships, please contact:

**BLINK SOLAR**

Phone: +48-22-555-9876

Email: [info@blinkartdesign.pl](mailto:info@blinkartdesign.pl)

Website: <https://blinkartdesign.pl>

*Scan QR code to visit our website:*

