

**BLINK SOLAR**

# Canberra Rural Home Outdoor Power BESS



**100-430KWH**

**230|400V**



## Overview

---

Will the Bess power Canberra in 2026?

Scheduled to begin operations in 2026, the BESS will store enough renewable energy to power one-third of Canberra for two hours during peak demand, playing a pivotal role in achieving the ACT's net-zero emissions target by 2045.

What is Bess & evoenergy?

A partnership between the ACT Government and global energy storage leader Eku Energy, the 250 megawatts BESS will be part of the Evoenergy distribution network. It will store enough renewable energy to power one-third of Canberra for two hours during peak demand.

What is the Big Canberra battery project?

Installation is underway on behind-the-meter batteries at nine sites. The Big Canberra Battery project will deliver an ecosystem of batteries across the ACT to ensure that our electricity grid remains stable. The Big Canberra Battery project includes the installation of: installation of behind-the-meter batteries at nine government sites.

Why should we invest in the Big Canberra battery?

By investing in projects like the Big Canberra Battery, we're supporting economic growth, generating an ongoing supply of reliable revenue, creating local jobs, and attracting new investment in clean technology. "Our partnership with Eku Energy is a crucial step in the fight against climate change.

## Canberra Rural Home Outdoor Power BESS

---



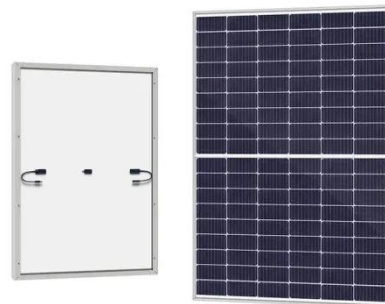
### **Net zero milestone: Construction starts on Williamsdale ...**

A partnership between the ACT Government and global energy storage leader Eku Energy, the 250 megawatts BESS will be part of the Evoenergy distribution network. It will ...

---

### **Habitat Energy to optimise Eku Energy Williamsdale battery**

The Williamsdale BESS is due to be operational in 2026 and forms part of the ACT Government's Big Canberra Battery project, designed to deliver an ecosystem of batteries ...



---

### **Habitat Energy to optimise the 500MWh ...**

The BESS recently entered construction and is being built to the south of Canberra. Habitat will utilise its integrated service by ...



## Williamsdale Battery Energy Storage System

Explore the Williamsdale Battery Energy Storage System (BESS) project by Eku Energy, a 250MW/500MWh facility in Canberra. This project ...



## Construction begins on ACT's Big Battery

The Williamsdale BESS is part of the ACT Government's Big Canberra Battery project and will play a critical role in supporting the ACT's transition to renewable energy and ...

## Construction begins on ACT's Big Battery

The Williamsdale BESS is part of the ACT Government's Big Canberra Battery project and will play a critical role in supporting the ...



## Habitat Energy to optimise the 500MWh Williamsdale BESS ...

The BESS recently entered construction and is being built to the south of

Canberra. Habitat will utilise its integrated service by harnessing the power of AI-powered ...



---

### **ACT government and Eku begin Williamsdale ...**

The Australian Capital Territory (ACT) government and Eku Energy have officially commenced construction of the Williamsdale ...



---

### **Big Canberra Battery - Williamsdale BESS**

The large-scale battery energy storage system (BESS) will provide at least 250 megawatts (MW) of power. This is enough energy to power one-third of Canberra for two ...



---

### **Net zero milestone: Construction starts on ...**

A partnership between the ACT Government and global energy storage

leader Eku Energy, the 250 megawatts BESS will be part ...



### **Construction begins on the Williamsdale Battery Energy ...**

Quotes attributable to Suzanne Orr of Minister for Climate Change, Environment, Energy and Water: The construction on the Williamsdale BESS is a pivotal step toward a ...

### **Habitat Energy to optimise Eku Energy ...**

The Williamsdale BESS is due to be operational in 2026 and forms part of the ACT Government's Big Canberra Battery project, ...



### **ACT government and Eku begin Williamsdale BESS ...**

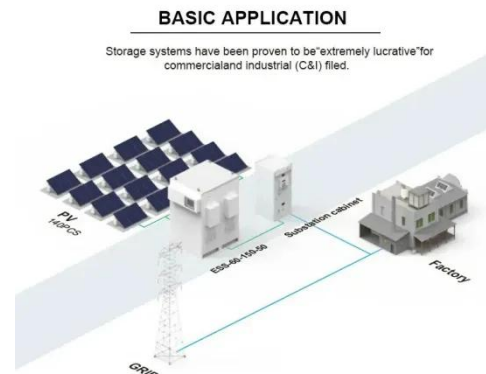
The Australian Capital Territory (ACT) government and Eku Energy have



officially commenced construction of the Williamsdale Battery Energy Storage System (BESS). The ...

## Construction begins on ACT's 250 MW Williamsdale BESS

The Australian Capital Territory (ACT) government and Eku Energy have commenced construction of the Williamsdale Battery Energy Storage System (BESS), a 250 ...



## Williamsdale Battery Energy Storage System

Explore the Williamsdale Battery Energy Storage System (BESS) project by Eku Energy, a 250MW/500MWh facility in Canberra. This project enhances energy security and reliability, ...

## Habitat Energy to optimise 250MW/500MWh Williamsdale ...

Habitat Energy, a leading global optimiser of battery storage and



renewable energy assets, has been appointed by Eku Energy, a global battery storage specialist, to ...



---

## Contact Us

For catalog requests, pricing, or partnerships, please contact:

### **BLINK SOLAR**

Phone: +48-22-555-9876

Email: [info@blinkartdesign.pl](mailto:info@blinkartdesign.pl)

Website: <https://blinkartdesign.pl>

*Scan QR code to visit our website:*

