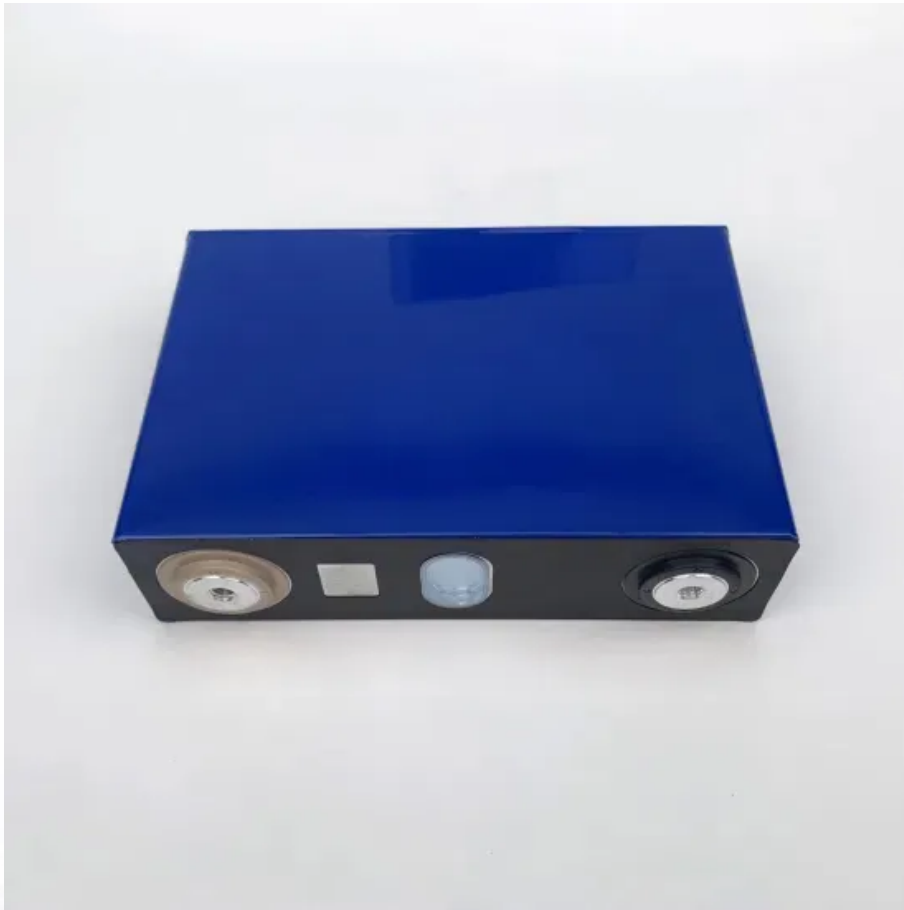


BLINK SOLAR

Circuit breaker in substation in Switzerland



Overview

What is a circuit breaker in a substation?

A circuit breaker in substation is a key component in electrical power systems, designed to interrupt the flow of electricity when a fault occurs, such as a short circuit or overload. Depending on system design, these devices can operate manually or automatically and come in various types, including air, vacuum, oil, and SF₆ gas.

Do substation circuit breakers comply with ANSI standards?

Substation circuit breakers must comply with national and international reliability and safety standards, such as those set out by the American National Standards Institute (ANSI) or the International Electrotechnical Commission (IEC).

How long does a substation circuit breaker last?

A substation circuit breaker has three critical life stages: initial installation, maintenance and testing, and end-of-life. Following proper procedures at all of these stages will extend the life and enhance the efficacy of your circuit breakers.

What is a circuit breaker?

Circuit breakers are specialized switches designed to detect faults and stop the flow of electricity in high-stakes environments. In substations, they are configured to handle higher voltages and currents than those of household breakers. They play a pivotal role in protecting the grid.

Circuit breaker in substation in Switzerland



What Are the Types of High Voltage Circuit Breakers in a Substation?

Explore the types of high-voltage circuit breakers in substations and how Peak Substation Services delivers expert procurement and packaging solutions.

How does a safety circuit breaker work in a substation?

As a safety circuit breaker supplier, I often get asked about how these crucial devices work in a substation. In this blog post, I'll delve into the inner workings of safety circuit ...

Highvoltage Battery



The basic things about substations you MUST know in the ...

Go back to contents ? 2.2 Circuit Breakers Circuit breakers which control high voltages and protect other substation equipment are also located at power substations. Many ...



Circuit Breaker In Substation - Types, Protection And Safety

A circuit breaker in substation systems protects transformers and grid infrastructure by interrupting faults like overloads or short circuits. Learn how they work, their types, ...

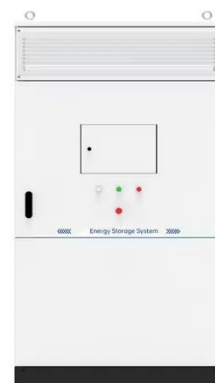


Electrical Substation: Equipment, Types, Components

An electrical substation is an integral part of a generation, transmission and distribution system. A substation can interrupt or establish electrical circuit, change the ...

Substation Circuit Breakers: Ensuring Power Distribution ...

This article explores the critical role of substation circuit breakers in safeguarding power distribution systems, enhancing grid reliability, and protecting infrastructure, personnel, ...



Substation Components--Part 3: Circuit Breakers

Substation Components--Part 3: Circuit



Breakers This article explores the crucial role of circuit breakers in substations, covering their fundamental functions, interruption ...

Circuit Breaker In Substation - Types, ...

A circuit breaker in substation systems protects transformers and grid infrastructure by interrupting faults like overloads or short circuits. ...



Substation Circuit Breakers: Ensuring Power Distribution

Ensure reliable power distribution with Substation Circuit Breakers by Swartz Engineering. Discover their role in safety, efficiency, and grid stability.

Substation Primary Design Standard

Substation side of line disconnectors for line entry bays below 330kV and greater

than 40kA; Capacitor side of capacitor circuit breaker/current transformer; Reactor side of ...



How does a safety circuit breaker work in a ...

As a safety circuit breaker supplier, I often get asked about how these crucial devices work in a substation. In this blog post, I'll delve into ...

PIFFNER Group to launch high voltage circuit breaker - ...

Switzerland-based transmission and distribution component specialist PFIFFNER Group has announced a new, high voltage air-insulated switchgear (AIS) circuit breaker for substations ...



What is the role of circuit breakers in a substation?

Circuit breakers are essential components in a substation, performing



critical functions such as protecting against overcurrents, isolating faulty sections, controlling ...

Contact Us

For catalog requests, pricing, or partnerships, please contact:

BLINK SOLAR

Phone: +48-22-555-9876

Email: info@blinkartdesign.pl

Website: <https://blinkartdesign.pl>

Scan QR code to visit our website:

