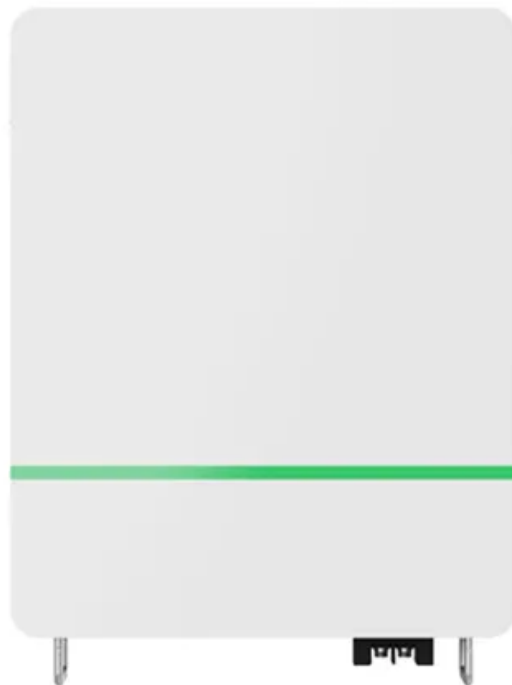


BLINK SOLAR

Construction status of wind and solar complementary power generation in Thimphu solar container communication station



Overview

In the context of carbon neutrality, renewable energy, especially wind power, solar PV and hydropower, will become the most important power sources in the future low-carbon power system. Since wind pow.

Can a multi-energy complementary power generation system integrate wind and solar energy?

Simulation results validated using real-world data from the southwest region of China. Future research will focus on stochastic modeling and incorporating energy storage systems. This paper proposes constructing a multi-energy complementary power generation system integrating hydropower, wind, and solar energy.

Are solar PV and onshore wind energy possible in India?

Jain, Das made a Geographic Information System (GIS) -based multi-criteria assessment of the solar PV and onshore wind energy potential in India. However, since analysis confined to the spatial scale only was not comprehensive, further analysis on the complementary potential of wind power and PV power at temporal scale was needed.

Can wind-solar-hydro complementarity improve China's future power system stability?

Wind-solar-hydro complementary potential shows great temporal and spatial variation. Renewable complementarity can improve China's future power system stability. In the context of carbon neutrality, renewable energy, especially wind power, solar PV and hydropower, will become the most important power sources in the future low-carbon power system.

Is a multi-energy complementary wind-solar-hydropower system optimal?

This study constructed a multi-energy complementary wind-solar-hydropower system model to optimize the capacity configuration of wind, solar, and hydropower, and analyzed the system's performance under different wind-solar ratios. The results show that when the wind-solar ratio is 1.25:1, the overall system performance is optimal.

Construction status of wind and solar complementary power genera



Optimal Design of Wind-Solar complementary power generation ...

This paper proposes constructing a multi-energy complementary power generation system integrating hydropower, wind, and solar energy. Considering capa...

Complementary potential of wind-solar-hydro power in ...

In order to further develop renewable energy used for power generation in the future, a comprehensive analysis on the complementary potential and spatial-temporal ...



Integrating Solar and Wind - Analysis

A key aspect of this report is a first-ever global stocktake of VRE integration measures across 50 power systems, which account for ...



Assessment of solar energy generation potential in Western ...

The result showed the annual solar energy generation, final energy yield and performance ratio (PR) of 19,336 kWh, 4.63 kWh/kWp and 84 % respectively. The estimated ...



Matching Optimization of Wind-Solar Complementary Power Generation

The intermittency, randomness and volatility of wind power and photovoltaic power generation bring trouble to power system planning. The capacity configuration of integrated ...

Thimphu Wind and Solar Energy Storage Power Station

Optimizing the physical design and layout of a resilient wind, solar · For renewable energy generation systems of the future that will need to provide consistent power or ...



Power Generation Scheduling for a Hydro-Wind-Solar ...

The realization of a multi-energy complementary system first needs to



pay attention to the form in which dozens or even hundreds of wind and solar power plants participate in ...

Overview of hydro-wind-solar power complementation ...

To address climate change, China is positively adjusting the configuration of energy generation and consumption as well as developing renewable energy sources in a ...



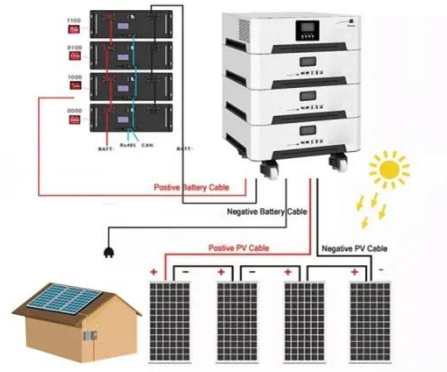
Integrating Solar and Wind - Analysis

A key aspect of this report is a first-ever global stocktake of VRE integration measures across 50 power systems, which account for nearly 90% of global solar PV and ...

Design of a Wind-Solar Complementary Power Generation ...

In order to improve the utilization

efficiency of wind and photovoltaic energy resources, this paper designs a set of wind and solar complementary power generation ...



Efficient Higher Revenue

- Max. Efficiency 97.5%
- Max. PV Input Voltage 600V
- 1500W Peak Output Power
- 2 MPPT Trackers, 150% DC Input Oversizing
- Max. PV Input Current 15A, Compatible with High Power Modules

Intelligent Simple O&M

- IP66 Protection Degree: support outdoor installation
- Smart IV Curve Diagnosis Function: locate PV string faults accurately and automatically detect faults
- DC & AC Type II SPD: prevent lightning damage
- Battery Reverse Connection Protection

Flexible Abundant Configuration

- Plug & Play, EPS Switching Under 10ms
- Compatible with Lead-acid and Lithium Batteries
- Max. 6 Units Inverters Parallel
- AFPD Function (optional): when an arc fault is detected the inverter immediately stops operation

An in-depth study of the principles and technologies of ...

Abstract. In the face of the global energy crisis and the challenges of climate change in the 21st century, there is an urgent need to shift to sustainable energy solutions. Wind-solar hybrid ...

Contact Us

For catalog requests, pricing, or partnerships, please contact:

BLINK SOLAR

Phone: +48-22-555-9876

Email: info@blinkartdesign.pl

Website: <https://blinkartdesign.pl>

Scan QR code to visit our website:

