

BLINK SOLAR

Flywheel energy storage is maximum



Overview

What is flywheel energy storage?

Policies and ethics Flywheel energy storage stores electrical energy in the form of mechanical energy in a high-speed rotating rotor. The core technology is the rotor material, support bearing, and electromechanical control system. This chapter mainly introduces the main structure of.

What determines the maximum energy storage of a flywheel?

The maximum energy storage of a flywheel is determined by its rotational speed and mass. 2. The energy capacity is expressed mathematically as ($E = \frac{1}{2} I \omega^2$). 3. Factors contributing to energy output include material composition and design. 4. Practical limitations arise from material constraints and operational efficiency.

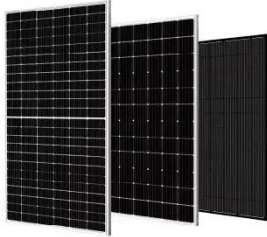
What is the core technology of Flywheel energy storage system?

The core technology is the rotor material, support bearing, and electromechanical control system. This chapter mainly introduces the main structure of the flywheel energy storage system, the electromechanical control system, and the charging and discharging control process .

Can flywheels be used for power storage systems?

Flywheels are now a possible technology for power storage systems for fixed or mobile installations. FESS have numerous advantages, such as high power density, high energy density, no capacity degradation, ease of measurement of state of charge, don't require periodic maintenance and have short recharge times .

Flywheel energy storage is maximum



What is the maximum energy that a flywheel can store?

What is the maximum energy that a flywheel can store? 1. The maximum energy storage of a flywheel is determined by its rotational speed and mass. 2. The energy capacity is ...

Flywheel Energy Storage System

The entire flywheel energy storage system realizes the input, storage, and output processes of electrical energy. The flywheel battery system includes a motor, which operates in the form of ...



Flywheel energy storage

Flywheel energy storage (FES) works by accelerating a rotor (flywheel) to a very high speed and maintaining the energy in the system as rotational energy. When energy is ...

A review of flywheel energy storage systems: state of the ...

...

This paper gives a review of the recent Energy storage Flywheel Renewable energy Battery Magnetic bearing developments in FESS technologies. Due to the highly ...



A Critical Analysis of Flywheel Energy Storage Systems' ...

Flywheel energy storage (FES) has been proven to be a good alternative to standard EES (such as batteries, thermal storage, etc.) for smoothing the use of renewable ...



Design of flywheel energy storage device with high ...

The multistage flywheel energy storage device designed in this paper adopts a two-stage flywheel on the basis of the above flywheel energy storage device, forming a ...



Maximum energy storage of flywheel rotor materials [25].

Table 2 lists the maximum energy storage of flywheels with different



materials, where the energy storage density represents the theoretical value based on an equal-thickness-disc flywheel rotor.

Flywheel Energy Storage Systems and their Applications: ...

Flywheel energy storage systems are suitable and economical when frequent charge and discharge cycles are required. Furthermore, flywheel batteries have high power ...



Technology: Flywheel Energy Storage

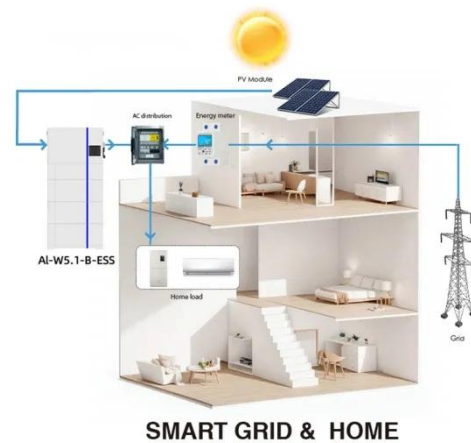
Summary of the storage process
Flywheel Energy Storage Systems (FESS) rely on a mechanical working principle: An electric motor is used to spin a rotor of high inertia up to ...



Flywheel Energy Storage System , SpringerLink

Flywheel energy storage stores electrical

energy in the form of mechanical energy in a high-speed rotating rotor. The core technology is the rotor material, support bearing, and ...



Contact Us

For catalog requests, pricing, or partnerships, please contact:

BLINK SOLAR

Phone: +48-22-555-9876

Email: info@blinkartdesign.pl

Website: <https://blinkartdesign.pl>

Scan QR code to visit our website:

