

**BLINK SOLAR**

# Forced charging of tool lithium batteries



## Overview

---

Do cordless tools need a battery?

A reliable power tool battery is essential for anyone using cordless tools, whether for professional work or DIY projects. However, improper charging habits can lead to shorter battery life, weaker performance, or even dangerous situations.

How do you charge a lithium ion battery?

Use a charger specifically designed for NiCd or NiMH chemistry. Avoid overcharging; remove the battery once it's fully charged. For NiCd, fully discharge before recharging to reduce memory effect. For NiMH, avoid full discharge to prevent capacity loss. 2. Charging Li-ion Batteries Use a smart charger that stops charging once full.

How do you charge a LiFePO4 battery?

Use a smart charger that stops charging once full. Avoid fast charging frequently, as it can shorten battery life. Keep batteries cool during charging to prevent overheating. 3. Charging LiFePO4 Batteries Use a charger that matches the battery's voltage and current specifications. Avoid overcharging, as it can degrade battery health.

What is a lithium ion battery?

Lithium-ion batteries are rechargeable batteries where lithium ions move between the positive (cathode) and negative (anode) electrodes during charge/discharge cycles. The key components are: Use a compatible lithium-ion battery charger designed for the specific battery chemistry and voltage.

## Forced charging of tool lithium batteries

---



### What Is Trickle Charging And Why Is It Not Advised For Lithium ...

While trickle charging works well for older battery types, it's not the best choice when it comes to lithium-ion batteries used in power tools.

---

## Top Standards for Lithium Battery Safety Testing

For lithium batteries, there are some popular standards that Battery Lab tests to most often. In this sequel of articles we are going to discuss about these popular standards one by one. Today ...



### How to Charge a Lithium-Ion Battery Properly: Step-by-Step ...

Learn how to charge a lithium-ion battery safely and effectively with our guide to best practices, tips, and charging do's and don'ts.

## Embedding Control of Battery Charging for Cordless ...

Introduction Embedded management of power-tool batteries can help designers to overcome the challenge of increasing battery life and operating times between charges, and of ...



## Battery Charging

Avoid using poorly manufactured or after-market batteries. Transport Canada (2023) reports that "third-party lithium-ion batteries, which are usually lower cost and thus ...

## Recharging Lithium Batteries: A Complete Guide for ...

Improper charging procedures can lead to thermal runaway, fires, or even explosions. This guide outlines essential safety practices, regulatory requirements, and risk ...



## How do you force a dead battery to charge?

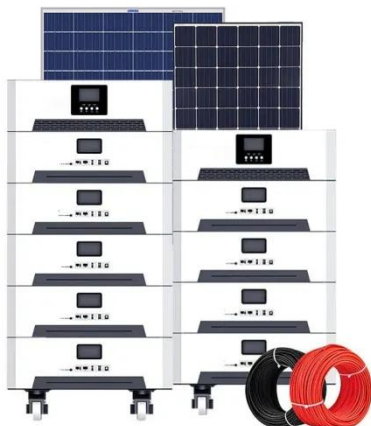
Forcing a dead battery to charge requires cautious reactivation methods.



Lithium-ion batteries entering deep discharge (below 2.5V/cell) may need specialized chargers with "recovery ...

## Tool Box Talk No 90

Charging a device or battery without following manufacturer's instructions may cause damage to rechargeable lithium-ion batteries. For example, some manufacturer ...



## Power Tool Battery Charging: Do's, Don'ts & Pro Tips

Learn how to charge power tool batteries correctly + avoid common mistakes. Discover Ufine Battery's custom power solutions for longer-lasting tools.

## The Truth About Power Tool Battery Standardization in 2025 ...

Summary and Industry Outlook Power tool battery standardization represents a multifaceted technical and commercial challenge with significant implications for the cordless ...



## Contact Us

---

For catalog requests, pricing, or partnerships, please contact:

### **BLINK SOLAR**

Phone: +48-22-555-9876

Email: [info@blinkartdesign.pl](mailto:info@blinkartdesign.pl)

Website: <https://blinkartdesign.pl>

*Scan QR code to visit our website:*

