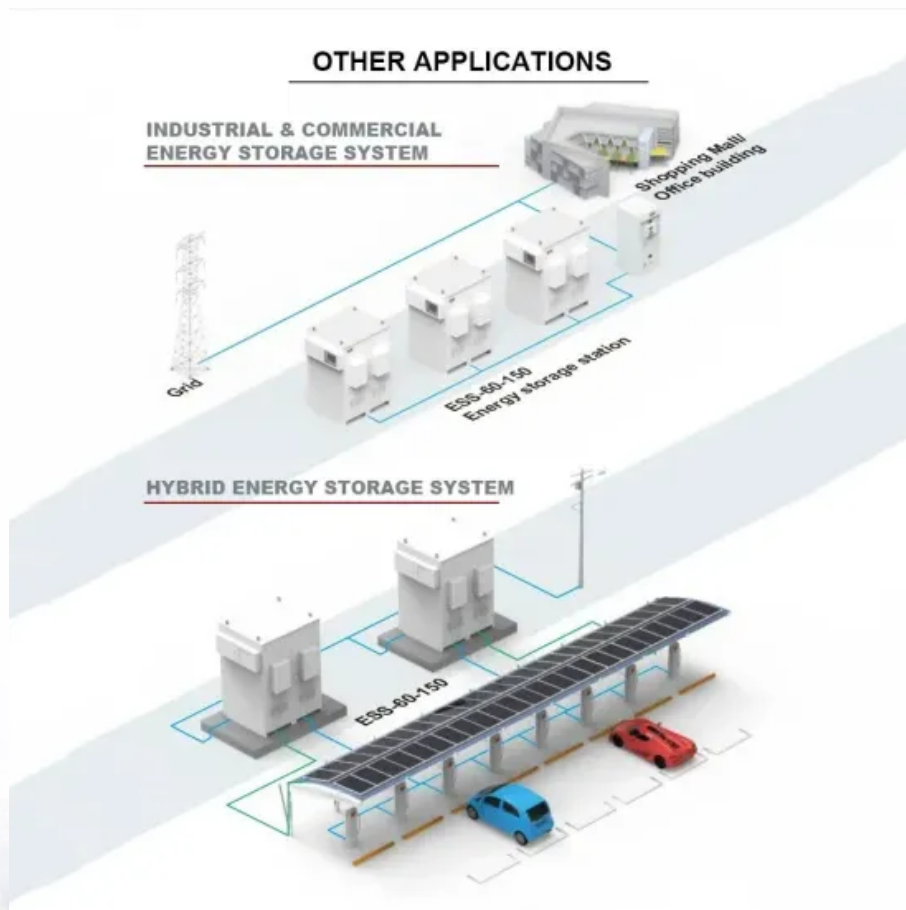


BLINK SOLAR

Funafuti Electric Power Uninterruptible Power Supply Equipment



Overview

What does Fuji Electric do?

Fuji Electric supplies products that incorporate power electronics technology, to improve the efficiency and stability of energy, such as UPS and PCS. To handle power source troubles such as outages and voltage fluctuations, our UPS are embedded in information devices and facilities equipment such as servers and supercomputers.

What is an uninterruptible power supply (UPS)?

An Uninterruptible Power Supply (UPS) is a device designed to provide backup power when the primary power source fails or when voltage levels drop below acceptable limits. UPS systems are commonly used in computers, server farms, and data centers to ensure uninterrupted operation and protect digital data from power-related disruptions.

Why should you buy a Fuji Electric UPS system?

Fuji Electric's high-efficiency UPS systems help to protect critical customer systems and data from power troubles while at the same time helping to improve the global environment by reducing CO2 emissions. Japan China Asia Icon means main region for sale. In case of other regions, please contact us.

Why should a data center use a Fuji Electric UPS system?

The cost of downtime can be catastrophic to financial institutions, data companies, hospitals and other facilities—not to mention the customers they serve. Fuji Electric's high-efficiency UPS Systems provide our customers with a lower total cost of ownership and the peace of mind they need. Learn more about Data Center Applications!

Funafuti Electric Power Uninterruptible Power Supply Equipment



FUJITSU Uninterruptible Power Supply (UPS) line interactive

Fujitsu UPS devices ensure high-performance power supply protection for systems and data, and thus provide reliable protection against power failure, current fluctuations and ...

Funafuti mining UPS explosion-proof uninterruptible power supply

Mine flameproof uninterruptible power supply box (hereinafter referred to as "power box") is suitable for underground coal mines in explosive environments, and is specially designed to ...



UPS & Industrial Power Supply

Fuji Electric supplies products that incorporate power electronics technology, to improve the efficiency and stability of energy, such as UPS and PCS.

Uninterruptible power supply (UPS)

Uninterruptible power supply (UPS)
Natural disasters such as typhoons and lightning strikes as well as power outages and instantaneous voltage drops due to sudden ...



Uninterruptible Power Supply

UPS Uninterruptible Power Supply (UPS)
Systems provides critical protection for data centers and telecommunication equipment in mission critical applications, serving as a source ...

Shanghai Electric Power Generation Group

Shanghai Electric Power Generation Group is the core industry sector of Shanghai Electric Group, specializes in power generation equipment manufacturing, power generation engineering and ...



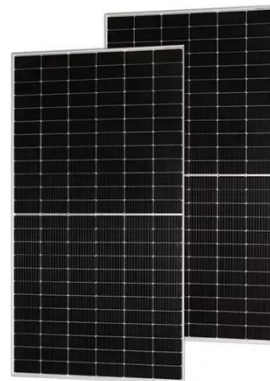
Uninterruptible power supply (UPS) For large-scale equipment



Uninterruptible power supply (UPS) For large-scale equipment applications (three-phase, 100 kVA or larger) Natural disasters such as typhoons and lightning strikes as well as ...

Fuji Uninterruptible Power Supply Energy Backup System

Integrating a Fuji Electric Uninterruptible Power Supply (UPS) between the solar inverter and medical facility loads ensures clean, stable, and continuous power. This setup ...



LIQUID COOLING ENERGY STORAGE SYSTEM

EMS real-time monitoring
No container design
flexible site layout



Cycle Life
≥ 8000

Nominal Energy
200kwh

IP Grade
IP55

Types of UPS (Uninterruptible Power Supply)

An Uninterruptible Power Supply (UPS) is a device designed to provide backup power when the primary power source fails or when voltage levels drop below acceptable ...

Contact Us

For catalog requests, pricing, or partnerships, please contact:

BLINK SOLAR

Phone: +48-22-555-9876

Email: info@blinkartdesign.pl

Website: <https://blinkartdesign.pl>

Scan QR code to visit our website:

