

**BLINK SOLAR**

# **Göteborg power station generator Sweden**



## Overview

---

Where can I find information about power plants in Sweden?

Global Energy Observatory/Google/KTH Royal Institute of Technology in Stockholm/Enipedia/World Resources Institute/database.earth Data and information about power plants in Sweden plotted on an interactive map.

How will Göteborg Energi and Siemens work together?

With this in mind Göteborg Energi and Siemens have come together in a cooperation agreement with the aim of testing state-of-the-art gas turbine technology that enables the operation of renewable fuels in the Rya combined heat and power (CHP) plant, which is today powered by natural gas.

How many power plants are in Sweden?

Sweden has 168 utility-scale power plants in operation, with a total capacity of 26418.7 MW. Värtaverket This data is a derivative set of data gathered by source mentioned below. Global Energy Observatory/Google/KTH Royal Institute of Technology in Stockholm/Enipedia/World Resources Institute/database.earth.

Where is RYA Göteborg located?

Rya Göteborg power station (Rya Kraftvärmeverk) is an operating power station of at least 250-megawatts (MW) in Göteborg, Västra Götaland, Sweden with multiple units, some of which are not currently operating. It is also known as Ryaverket (Göteborg). Loading map. Unit-level coordinates (WGS 84):

## Göteborg power station generator Sweden

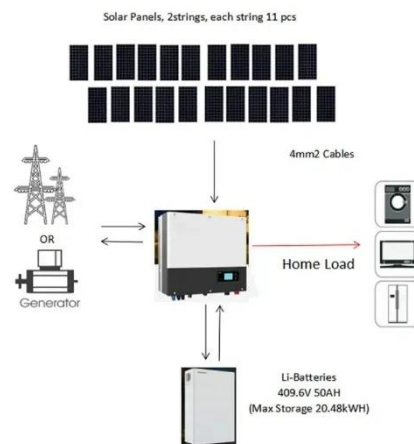


### 11-00329-03061900.doc

The measurements were performed at Utgrunden wind farm that is situated at the reef Utgrunden on the Swedish southeast coast. The farm consists of seven 1,5 MW turbines. Three ...

## Power plants: Ringhals

Ringhals is located approximately 60 kilometres south of Gothenburg in western Sweden. It consists of four reactors, two of which are in ...



## Rya CHP CCGT Power Plant Sweden



Rya CHP CCGT Power Plant Sweden is located at Rya dock area of Gothenburg, Sweden. Location coordinates are: Latitude= 57.6924, Longitude= 11.8905. This infrastructure ...

## Building power station in Gothenburg

The contract includes the construction of a power station with an incoming electricity capacity of 19 MVA. "We are pleased to have been entrusted with contributing to a more ...



## Power plant profile: Rya Combined Heat and Power Plant, Sweden

Rya Combined Heat and Power Plant is a 272MW gas fired power project. It is located in Vastra Gotaland, Sweden. According to GlobalData, who tracks and profiles over ...

## Unique collaboration sees Hitachi Energy ...

The picture is taken in a safe area with no activity. Hitachi Energy's HyFlex(TM) hydrogen-powered generator supplied clean power to ...



## Welcome to Siemens Energy in Sweden

Siemens Energy in Sweden - We support companies and countries to reduce

emissions across the energy landscape - for a more reliable, affordable and sustainable ...



## Rya Göteborg Power Plant Map

Rya Göteborg Power Plant is a power station in Gothenburg Municipality, Västra Götaland County. Rya Göteborg Power Plant is situated nearby to the work of art Röda sten, as well as ...



## Siemens signs cooperation agreement in ...

By 2030, the ambition is that all district heating in Gothenburg, Sweden, will be produced by renewable or recovered energy sources. ...

## Siemens signs cooperation agreement in Sweden to test ...

Cooperation aims to test renewable fuels at the Rya CHP plant located in the

energy port of Gothenburg First phase with Göteborg Energi is to validate 3D-printed burners ...



## Power Plants in Sweden (Map) , database.earth

Data and information about power plants in Sweden plotted on an interactive map.



## Building power station in Gothenburg

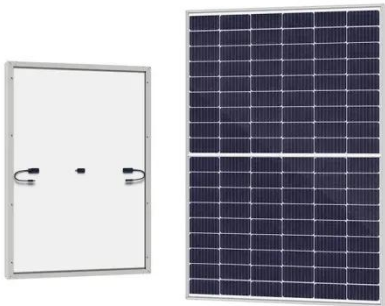
The contract includes the construction of a power station with an incoming electricity capacity of 19 MVA. "We are pleased to have been ...



## Power House

Our Services We cover non-standard requests like customizations (special generators, soundboxes, hydraulic

pumps, ...



---

## Microsoft Word

Doktorsavhandlingar vid Chalmers  
tekniska högskola Ny serie nr. 2741 ISSN  
0346-718X Division of Electric Power  
Engineering Department of Energy and  
Environment ...



---

## Siemens signs cooperation agreement in Sweden to test ...

By 2030, the ambition is that all district  
heating in Gothenburg, Sweden, will be  
produced by renewable or recovered  
energy sources. With this in mind  
Göteborg Energi and ...



---

## Göteborg Energi and Siemens in cooperation for fossil-free ...

By 2025, the ambition is that all district  
heating in Gothenburg, Sweden, is



produced by renewable or recovered energy sources. Göteborg Energi and Siemens have therefore ...



### Unique collaboration sees Hitachi Energy decarbonize ...

The picture is taken in a safe area with no activity. Hitachi Energy's HyFlex(TM) hydrogen-powered generator supplied clean power to an on-site charging station. The ...

### Göteborg power station

Göteborg power station is an operating power station of at least 36-megawatts (MW) in Sweden. It is also known as Rosenlundsverket.



### Generator AB:Company Profile & Technical ...

Discovery Company profile page for Generator AB including technical

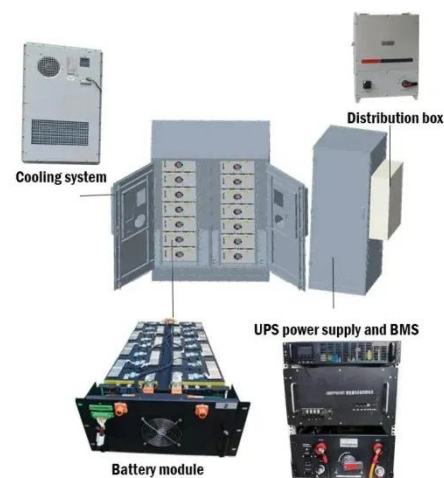


research,competitor monitor,market trends,company profile& stock symbol



## List Of Power stations in Göteborg

Number of Power stations in Göteborg with email address, phone number, geocoded address,social media profiles and other key details for download.



## Rya Göteborg power station

Rya Göteborg power station (Rya Kraftvärmeverk) is an operating power station of at least 250-megawatts (MW) in Göteborg, Västra Götaland, Sweden with multiple units, some ...

## Göteborg, Sweden

Göteborg, or Gothenburg, is Sweden's second-largest city and a major port on the country's west coast. With a city

proper population of ...



---

## Contact Us

---

For catalog requests, pricing, or partnerships, please contact:

### **BLINK SOLAR**

Phone: +48-22-555-9876

Email: [info@blinkartdesign.pl](mailto:info@blinkartdesign.pl)

Website: <https://blinkartdesign.pl>

*Scan QR code to visit our website:*

