

BLINK SOLAR

Household inverter with large capacity



Overview

What is a good inverter capacity for a house?

For houses, it is usually taken as 0.7. So, inverter capacity (VA) = Total power requirement (Watt) ÷ Power Factor Using the above example: Inverter capacity = $430 \div 0.7 = 614$ VA So, you must look for an inverter of around 650 VA or a little more. It is always better to keep some margin to avoid overload.

Do I need an inverter size chart?

The need for an inverter size chart first became apparent when researching our DIY solar generator build. Solar generators range in size from small generators for short camping trips to large off-grid power systems for a boat or house. Consequently, inverter sizes vary greatly.

Which inverter is best for your home?

Using the above example: Inverter capacity = $430 \div 0.7 = 614$ VA So, you must look for an inverter of around 650 VA or a little more. It is always better to keep some margin to avoid overload. If you are thinking which inverter is best for your home when it comes to capacity, then remember to select based on your real usage instead of guessing.

What are the different solar inverter sizes?

Solar generators range in size from small generators for short camping trips to large off-grid power systems for a boat or house. Consequently, inverter sizes vary greatly. During our research, we discovered that most inverters range in size from 300 watts up to over 3000 watts. In this article, we guide you through the different inverter sizes.

Household inverter with large capacity



Step-by-Step Guide to Select Best Inverter for Home

Find out how to choose the best inverters for home with tips on capacity, battery type, brand, and features to ensure reliable backup during power cuts.

What Size Power Inverter Is Needed for a House [Full Guide]

You know you need a power inverter, but the big question is: How big of a power inverter do I need? In general, a 3000W to 5000W inverter works well for most homes, but the ...

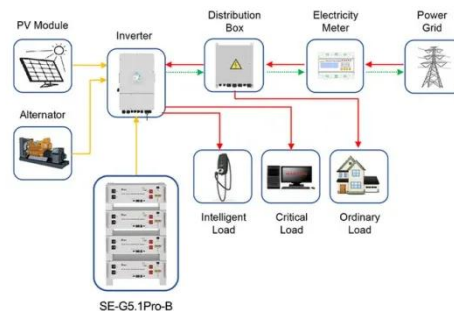


3KW, 6KW, 8KW, and Beyond: Choosing the Right Hybrid Inverter

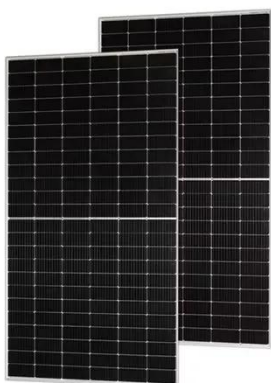
Choose the perfect hybrid inverter--3KW, 6KW, 8KW, or higher--for your energy needs. Compare features, efficiency, and scalability in this guide.

Step-by-Step Guide to Select Best Inverter for ...

Find out how to choose the best inverters for home with tips on capacity, battery type, brand, and features to ensure reliable backup ...



Application scenarios of energy storage battery products



The Only Inverter Size Chart You'll Ever Need

We created a comprehensive inverter size chart to help you select the correct inverter to power your appliances. The need for an inverter size chart first became apparent ...

Best Inverter For Large Home [Updated: August 2025]

Improved Energy Management: High-capacity inverters improve energy management by effectively converting direct current (DC) from solar panels or batteries into ...



How to Choose the Best Inverter for Home Use: A Complete ...



When selecting the best inverter for home use, start by calculating your total wattage requirements--add up all essential appliances you plan to run during a power outage. For ...

The Only Inverter Size Chart You'll Ever Need

How to Determine What Size Inverter I Need? What Are The Two Types of Power loads? Inverter Size Chart What Will A 300W Inverter Run? What Will A 500W Inverter Run? What Will A 700W Inverter Run? What Will A 1000W Inverter Run? What Will A 1500W Inverter Run? What Will A 2000W Inverter Run? What Will A 3000W Inverter Run? Appliances this inverter can run A 2000W inverter is a reliable source of continuous power for your most demanding equipment, such as power tools (driller, grinder, jigsaw, etc.). In addition, it can be a lifesaver in case of a power outage - 2000W is enough to run all of your basic domestic appliances, including a larg... See more on climatebiz Mint



10 best inverters for large homes offering high capacity, ...

Explore the 10 best inverters for large homes with high load capacity, pure sine

wave output, and efficient, long-lasting power backup performance.

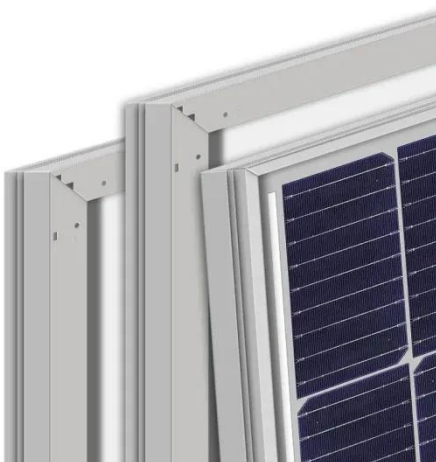


10 best inverters for large homes offering high capacity, ...

Explore the 10 best inverters for large homes with high load capacity, pure sine wave output, and efficient, long-lasting power backup performance.

High Capacity Inverter for Home: A Complete Guide

Choosing a high capacity inverter for your home can be a crucial decision, particularly if you want uninterrupted power supply for essential appliances during outages. ...



How Big of an Inverter Do I Need to Run a Whole House?

Industry best practices often recommend selecting an inverter with a capacity around 20-30% higher than your maximum load to accommodate future expansions and ...

What Size Inverter Do You Need for Your Home? , Renogy US

Well, the inverter's runtime depends on various factors, including the power consumption of the load connected, battery capacity, and the power consumption of the inverter itself. However, ...



Contact Us

For catalog requests, pricing, or partnerships, please contact:

BLINK SOLAR

Phone: +48-22-555-9876

Email: info@blinkartdesign.pl

Website: <https://blinkartdesign.pl>

Scan QR code to visit our website:

