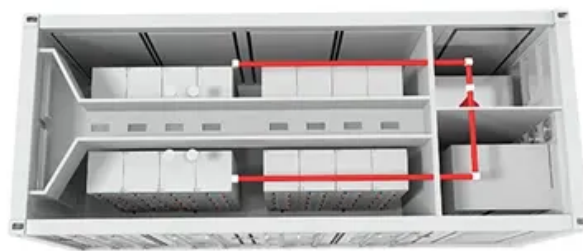


## BLINK SOLAR

**How big a battery should I use  
for an inverter that generates 5  
kWh of electricity**



## Overview

---

Most 5KW inverters run on 48V or 51.2V (LiFePO4 lithium batteries), meaning you need at least four 12V batteries to power it or one 48V (51.2V) battery. How many batteries do you need to run a 5000W inverter?

A 5000W inverter requires at least one 450-500ah 12V battery or two 210ah 12V batteries to run for 30-45 minutes. A 750ah 12V battery is needed to run the inverter for 1 hour. A 2500ah battery is required for a 4 hour discharge time. You have to double the capacity for each if you don't want to discharge the battery at 100%.

What is the recommended battery size for an inverter?

Interpreting Results: Once you input the required data, the calculator will generate the recommended battery size in ampere-hours (Ah). For instance, if your power consumption is 500 watts, the usage time is 4 hours, and the inverter efficiency is 90%, the calculator might suggest a battery size of approximately 222 Ah.

How many batteries can be used in a power inverter?

A possible battery configuration is four 12V 200Ah batteries in series and parallel with two other strings for 4S 3P batteries. We can also use two 24V 200Ah in series and parallel with two other strings for 2S 3P batteries. It's essential to consider voltage, volume, and C-rate when choosing batteries for power inverters.

How many hours does a 5000 watt inverter run?

Large inverters are used as emergency power backup, so determine how many hours the system will run. The formula is  $\text{hours needed} \times \text{watts} = \text{total watts} / \text{volts} = \text{battery amps}$ . A 5000W inverter requires at least one 450-500ah 12V battery or two 210ah 12V batteries to run for 30-45 minutes. A 750ah 12V battery is needed to run the inverter for 1 hour.

## How big a battery should I use for an inverter that generates 5 kWh



### How Many Batteries for 1000Watt Inverter - ...

Discover the essentials of determining 'how many batteries for a 1000W inverter' in this comprehensive guide, including battery sizing ...

### [Full Guide] How Many Batteries Do I Need for a 5KW Inverter?

Discover how many lithium batteries you need for a 5kW inverter to ensure your solar system operates efficiently around the clock.



### What Size Battery Do I Need for a 1000W Inverter?

To power a 1000W inverter, you typically need a battery with a minimum capacity of 100Ah if you plan to run it for about one hour. However, the actual size may vary based on ...



## Best Battery Size Calculator For Solar And Off-Grid Systems

Free battery size calculator - calculate the perfect battery capacity for your solar system, inverter, or car. Works with lithium-ion, lead-acid, and AGM batteries



51.2V 150AH, 7.68KWH

## Calculate Battery Size For Any Size Inverter (Using Our ...

Pairing a right size capacity battery for an inverter can be a bit confusing for most the beginners So I have made it easy for you, use the calculator below to calculate the battery ...

## What Size Battery Is Required for a 5000 Watt Inverter?

Discover the battery size you need to keep a 5000 watt inverter running smoothly--easy math, clear steps, and pro tips for homes, RVs, and solar setups.



## Calculate Battery Size for Inverter Calculator

The Calculate Battery Size for Inverter Calculator helps you determine the

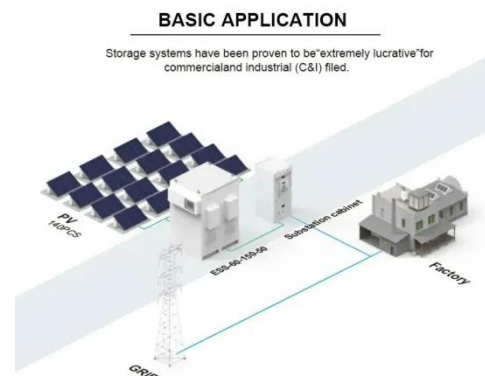
optimal battery capacity needed to support your inverter system. By inputting critical parameters such ...



## How Many Batteries for A 5000-Watt

...

This article will tell you how many batteries are needed for a 5kw inverter. We'll give you two examples of lithium and lead-acid batteries.



## How big an inverter should I use for a 6kw solar panel

Most installations slightly oversize the inverter, with a ratio between 1.1-1.25 times the array capacity, to account for these considerations. The size of the solar inverter you need is directly ...

## What Size Lithium Battery Do You Need for a 5kW Inverter?

A 5kW inverter typically pairs with a 48V lithium battery system sized between

5kWh to 20kWh, depending on runtime needs and depth of discharge.



## How Many Batteries for A 5000-Watt Inverter?

This article will tell you how many batteries are needed for a 5kw inverter. We'll give you two examples of lithium and lead-acid batteries.

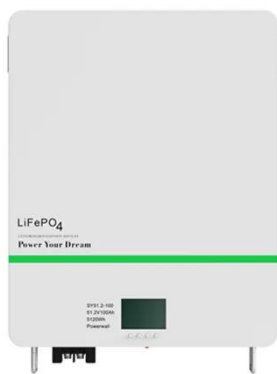
## Calculate Battery Size For Any Size Inverter (Using Our ...

Inverter Battery Size Calculator  
How to Calculate Battery Capacity For Inverter  
How Many Batteries For 3000-Watt Inverter  
Battery Size Chart For Inverter  
Battery to Inverter Wire Size Chart  
To calculate the battery capacity for your inverter use this formula  
$$\text{Inverter capacity (W)} \times \text{Runtime (hrs)} / \text{solar system voltage} = \text{Battery Size} \times 1.15$$
  
Multiply the result by 2 for lead-acid type battery, for lithium battery type it would stay the same  
Example Let's suppose you have a 3000-watt inverter with an 85% efficiency rate and your daily runtime  
See more on dotwatts LiTime



## [Full Guide] How Many Batteries Do I Need ...

Discover how many lithium batteries you need for a 5kW inverter to ensure your solar system operates efficiently around the clock.



### What is the Number of Lithium Batteries to Supply a 5kW Inverter?

Here, we are going to calculate how many Li-ion batteries one needs to run a 5kW inverter by explaining the advantages of Li-ion batteries over lead acid and doing a profound ...

### What's the Ideal Battery Size for your Homes?

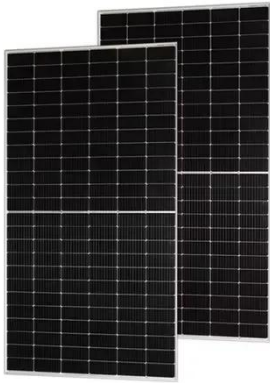
Wondering what battery size suits your Australian home? We explain how to choose the ideal solar battery based on your energy use, goals, and the latest 2025 rebates.



### How Many Lithium Batteries to Supply a 5KW Inverter

To power a 5KW inverter for 8 hours, you would typically need around 5 lithium batteries of 48V 200Ah capacity. If you need the system to run for 12 hours, you

would require ...



---

## How Many Batteries Do I Need for a 5000W ...

To power a 5000W inverter, you have to consider more than just the number of batteries. The battery capacity, the inverter voltage input and how long ...



---

## What Size Lithium Battery Do You Need for a ...

A 5kW inverter typically pairs with a 48V lithium battery system sized between 5kWh to 20kWh, depending on runtime needs and depth ...



---

## Calculate Battery Size for Inverter Calculator

The Calculate Battery Size for Inverter Calculator helps you determine the

optimal battery capacity needed to support your inverter ...



### How Many Lithium Batteries to Supply a 5KW ...

To power a 5KW inverter for 8 hours, you would typically need around 5 lithium batteries of 48V 200Ah capacity. If you need the system ...

### How Many Batteries Do I Need for a 5000W Inverter

To power a 5000W inverter, you have to consider more than just the number of batteries. The battery capacity, the inverter voltage input and how long you need to use the inverter are ...

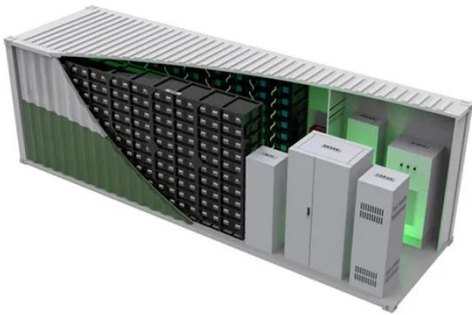
#### GRADE A BATTERY

LiFePO4 battery will not burn when overcharged or over discharged, overcurrent or short circuit and can withstand high temperatures without decomposition.



### Choosing and Sizing Batteries, Charge Controllers and Inverters ...

Solar Panels Choosing and Sizing Batteries, Charge Controllers and



Inverters for Your Off-Grid Solar Energy System Choosing and Sizing Batteries, Charge Controllers and Inverters for ...

## How Big Of an Inverter Can My Car Handle

The inverter is the device that converts power from battery-powered electronics to the voltage used by your car (120 volts). The greater ...



## Solar Panel And Battery Sizing Calculator

A Solar Panel and Battery Sizing Calculator helps you determine the optimal size of solar panels and batteries required to meet ...

## Can an Inverter Be Too Big for Your Battery System?

How to Calculate the Right Inverter Size for Your Battery Match the inverter's

continuous wattage rating to the battery's discharge capacity. For a 12V 200Ah battery (2.4kWh), a 2000W inverter ...



---

## Contact Us

For catalog requests, pricing, or partnerships, please contact:

### **BLINK SOLAR**

Phone: +48-22-555-9876

Email: [info@blinkartdesign.pl](mailto:info@blinkartdesign.pl)

Website: <https://blinkartdesign.pl>

*Scan QR code to visit our website:*

