

**BLINK SOLAR**

# **How big a lead-acid battery should a 35v solar panel charge**



## Overview

---

Note: If you already have a solar panel and want to know how long it will take to charge your battery, use our solar battery charge time calculator.

How do I charge a lead acid battery using solar power?

To effectively charge a lead acid battery using solar power, gather the following components: Solar Panel: Select a solar panel with sufficient wattage to match the battery's charging requirements, typically between 50W to 300W depending on the battery size.

Can a 120W solar panel charge a 35ah battery?

A 35ah battery may have a capacity of 420 watts, but due to the depth of discharge (DO) in lead acid batteries, it can only be charged with 210 watts at a time. All lead acid batteries (FLA, AGM, gel) cannot be used to their full capacity, and must be recharged when the capacity drops to 50%. If you use a 120W solar panel, the charge time will be a bit faster.

How many watts a solar panel to charge a lithium battery?

You need around 1600-2000 watts of solar panels to charge most of the 48V lithium batteries from 100% depth of discharge in 6 peak sun hours with an MPPT charge controller. What Size Solar Panel To Charge 120Ah Battery?

.

How long does it take to charge a solar battery?

A 12V 35ah battery can be recharged by two 250 watt solar panels in an hour or by five 100W panels in 5 hours.

## How big a lead-acid battery should a 35v solar panel charge

---



### How to Charge Lead Acid Battery with Solar Panel: A Step-by ...

Discover how to efficiently charge lead acid batteries with solar panels in remote locations. This comprehensive guide covers the types of lead acid batteries, solar panel ...

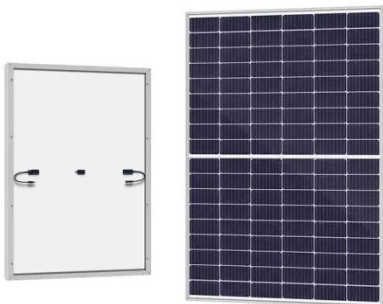
## How big a battery should I use for a 35v solar panel

To charge this battery bank, you can either use a 24V (nominal) panel, or connect two smaller voltage panels in a series connection. Two 100W panels set up in series can produce 40V ...



## Solar Battery Charge Time Calculator

Solar Battery Charge Time Calculator  
 Battery Voltage (V): Battery Capacity (Ah): Battery Type: Lead Acid Lithium (LiFePO4) Depth of Discharge (%): Solar Panel Wattage (W): ...



## Solar Panel Size Calculator - Charge Your Battery In Desired ...

Use our solar panel size calculator to find out the ideal solar panel size to charge your lead acid or lithium battery of any capacity and voltage. For example, 50ah, 100ah, ...

18650 3.7V  
Li-ion  
RECHARGEABLE BATTERY

2000mAh



## How Big Are Solar Panel Batteries: A Guide to Sizes, Types, ...

Discover the essential guide to solar panel battery sizes and how they impact energy storage. Explore different types, including lead-acid and lithium-ion, their features, and ...

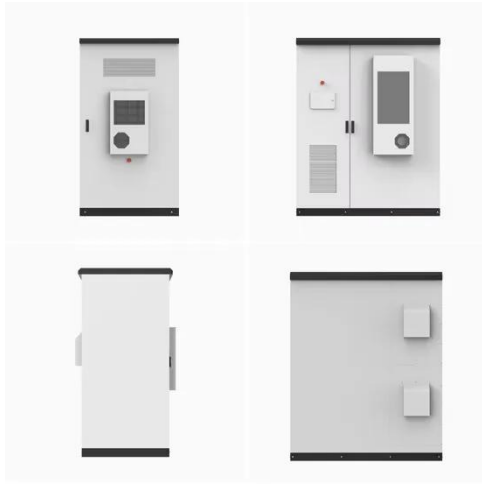
## What Solar Panel Size to Charge a 35ah Battery?

A 35ah battery is a good alternative if you only run small appliances and devices. It is light, affordable and still powerful. And compared to larger batteries, you only need smaller solar ...



## Best Battery Size Calculator For Solar And Off-Grid Systems

Free battery size calculator - calculate



the perfect battery capacity for your solar system, inverter, or car. Works with lithium-ion, lead-acid, and AGM batteries

## What Size Solar Panel To Charge 100Ah Battery? (Calculator ...

Alright, now you can fully see what size solar panel you need to charge a 100Ah 12V solar panel (be it lithium, deep cycle, or lead-acid). Example: If you want to charge a 100Ah ...



## How big a lead-acid battery should a 35v photovoltaic panel charge

How many watts a solar panel to charge a lithium battery? You need around 1600-2000 watts of solar panels to charge most of the 48V lithium batteries from 100% depth of discharge in 6 ...

## How Many Solar Panels To Charge 35Ah Battery? - Solair ...

...

A charge controller is an essential component of a solar-powered battery charging system, as it regulates the voltage and current supplied to the battery. Different charge controllers have ...



## How big a lead-acid battery should a 35v photovoltaic panel charge

How big a lead-acid battery should a 35v photovoltaic panel charge Follow these 6 steps to calculate the estimated required solar panel size to recharge your battery in desired time frame. .

## Choosing and Sizing Batteries, Charge Controllers and Inverters ...

Solar Panels Choosing and Sizing Batteries, Charge Controllers and Inverters for Your Off-Grid Solar Energy System Choosing and Sizing Batteries, Charge Controllers and Inverters for ...



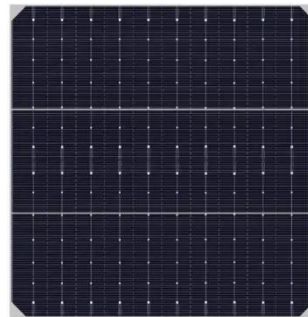
## 400W Solar Panel Kit (DIY): What Size Battery, ...

Also how much power will a 400W solar panel produce & what can a 400W solar panel run? In short, For a 400W solar panel kit, you'll ...



## How Do You Calculate Solar Panel to Battery

Learn how to calculate the Solar Panel to Battery setup. This guide covers everything from sizing to selecting the best components for efficient solar power.



## Solar Panel Size Calculator , Check Battery Charge Duration

The Solar Panel Size Calculator is an essential tool for anyone looking to harness the power of the sun efficiently. This calculator simplifies the process of determining the ...

## Calculate Battery Size For Any Size Inverter ...

Battery size chart for inverter Note! The input voltage of the inverter should



match the battery voltage. (For example 12v battery for ...



## Can You Charge A Lead Acid Battery With Solar Panel

This guide provides an in-depth guide on how to efficiently charge lead acid batteries with solar panels in remote locations. The process depends on factors such as panel ...

## Contact Us

For catalog requests, pricing, or partnerships, please contact:

### **BLINK SOLAR**

Phone: +48-22-555-9876

Email: [info@blinkartdesign.pl](mailto:info@blinkartdesign.pl)

Website: <https://blinkartdesign.pl>

*Scan QR code to visit our website:*



