

**BLINK SOLAR**

# **How big an inverter should I use for a 12V400AH battery**



## Overview

---

How to calculate battery size for inverter?

Start by assessing your daily power consumption which helps to calculate battery size for inverter. Make a list of all the appliances and devices you want to run on your inverter system. For each item, note the power rating (in watts) and how long you use it each day. Example: LED Light Bulb: 10 watts, used for 5 hours/day.

What size inverter for a 12V 200Ah battery?

For a 12V 200Ah battery (2.4kWh), a 2000W inverter is ideal. Formula: Inverter Wattage  $\leq$  (Battery Voltage  $\times$  Ah Rating  $\times$  0.8). Factor in surge power needs but prioritize sustained loads. Always check the battery's max discharge rate (C-rate) to avoid exceeding safe limits. When sizing for 24V or 48V systems, recalculate using the higher voltage.

Can a 12 volt car battery support a high power inverter?

Typically, a 12-volt car battery can support an inverter with a power range of about 150 watts to 1500 watts. Please note, however, that car batteries are not suitable for driving high power inverters for extended periods of time, which may cause damage to the battery.

How much battery should a 500 watt inverter use?

For instance, if your power consumption is 500 watts, the usage time is 4 hours, and the inverter efficiency is 90%, the calculator might suggest a battery size of approximately 222 Ah. Practical Tips: Ensure all input values are accurate to avoid skewed results.

## How big an inverter should I use for a 12V400AH battery

---



51.2V 300AH

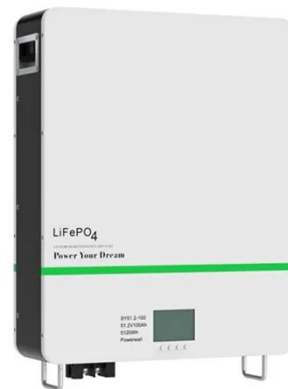
### Calculate Battery Size for Inverter Calculator

The Calculate Battery Size for Inverter Calculator helps you determine the optimal battery capacity needed to support your inverter system. By inputting critical parameters such ...

### How to Calculate the Right Battery Size for Your Inverter

...

Calculating the correct battery size ensures that your inverter system can meet your power needs without leaving you in the dark during outages. An undersized battery may not provide enough ...



### Calculate Battery Size For Any Size Inverter (Using Our ...

So I have made it easy for you, use the calculator below to calculate the battery size for 200 watt, 300 watt, 500 watt, 1000 watt, 2000 watt, 3000 watt, 5000-watt inverter

## Determining the Solar and Inverter Size Needed to Charge a Battery

These systems use the grid as backup, so your solar and inverter Size doesn't need to cover 100% of daily demand--but should still handle peak production efficiently. Off ...



## Can an Inverter Be Too Big for Your Battery System?

Why Battery Chemistry Matters in Inverter Sizing Lithium-ion batteries tolerate higher discharge rates (up to 1C) compared to lead-acid (0.5C). A 100Ah LiFePO4 battery can safely power a ...

## How to Calculate the Right Inverter Battery Capacity for Your ...

Learn how to calculate the right inverter battery capacity for your needs with a simple formula. Understand power requirements, efficiency losses, and the best battery types ...



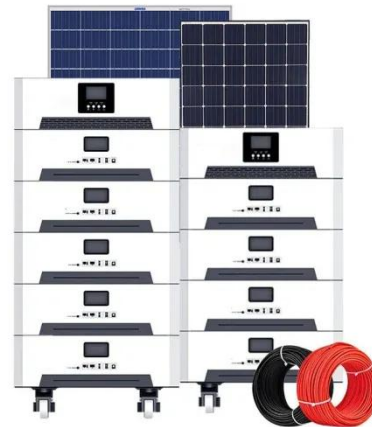
## Can a Battery Be Too Big for an Inverter?



Yes, a battery can be too big for an inverter, leading to inefficiencies and potential safety issues. Oversized batteries may not discharge correctly or could exceed the inverter's ...

## How Much Battery Capacity Do You Need With a 12V Inverter?

Discover how to calculate the ideal battery capacity for a 12V inverter using simple math, practical examples, and money-saving tips for daily power.



## How Big of an Inverter Can My Car Battery Handle?

When considering connecting an inverter to your car battery, the first question we need to clarify is: how much power can your car battery actually support an inverter? Typically, ...

## What Size Inverter Do I Need for a 400Ah Battery?

To determine the appropriate inverter size for a 400Ah battery, you need to

consider the total wattage of the devices you plan to power. A general guideline is to choose ...



## Calculate Battery Size For Any Size Inverter (Using Our ...

Inverter Battery Size Calculator  
How to Calculate Battery Capacity For Inverter  
How Many Batteries For 3000-Watt Inverter  
Battery Size Chart For Inverter  
Battery to Inverter Wire Size Chart  
To calculate the battery capacity for your inverter use this formula  
Inverter capacity (W)\*Runtime (hrs)/solar system voltage = Battery Size\*1.15  
Multiply the result by 2 for lead-acid type battery, for lithium battery type it would stay the same  
Example Let's suppose you have a 3000-watt inverter with an 85% efficiency rate and your daily runtime  
See more on [dotwatts](#)  
[redwaybattery](#)

## What Size Inverter Do I Need for a 400Ah Battery?

To determine the appropriate inverter size for a 400Ah battery, you need to consider the total wattage of the devices you plan to power. A general guideline is to choose ...

## Contact Us

---

For catalog requests, pricing, or partnerships, please contact:

### **BLINK SOLAR**

Phone: +48-22-555-9876

Email: [info@blinkartdesign.pl](mailto:info@blinkartdesign.pl)

Website: <https://blinkartdesign.pl>

*Scan QR code to visit our website:*

