

BLINK SOLAR

How big an inverter should I use for a 50w 220v



Overview

Generally, it's recommended to size the inverter to 80-100% of the DC system's rated capacity. Do I need an inverter size chart?

The need for an inverter size chart first became apparent when researching our DIY solar generator build. Solar generators range in size from small generators for short camping trips to large off-grid power systems for a boat or house. Consequently, inverter sizes vary greatly.

What are the different solar inverter sizes?

Solar generators range in size from small generators for short camping trips to large off-grid power systems for a boat or house. Consequently, inverter sizes vary greatly. During our research, we discovered that most inverters range in size from 300 watts up to over 3000 watts. In this article, we guide you through the different inverter sizes.

How many Watts Does a solar inverter use?

Depending on where they fall in that band and the size of their solar array, they will likely use a 3, 5, or 10kW inverter. You also need to consider surge watts and voltage drop. Surge watts are the extra power required to start appliances that have motors, such as refrigerators and air conditioners.

What size cable do I need for a 3500W inverter?

For inverters rated up to 3500W, the cable size should be 1/0 AWG, sufficient to handle the startup and continuous current required. Another consideration is the inline fuse, as this will protect both sides of the system in the event of a shortage in the system. To ascertain the fuse you need, divide the AC wattage by the DC Voltage.

How big an inverter should I use for a 50w 220v



What Size Solar Inverter Do I Need? A Quick Sizing Guide

Learn what size solar inverter do I need with step-by-step load calculations, surge tips, and Lefor Solar Inverter Series recommendations.

How to Choose the Right Size Solar Inverter: Step-by-Step ...

Wondering what size solar inverter do I need for your solar system? This guide walks you through calculating inverter size based on panel capacity, power usage, and safety ...



The Only Inverter Size Chart You'll Ever Need

We created a comprehensive inverter size chart to help you select the correct inverter to power your appliances. The need for an inverter size chart first became apparent ...



What Size Inverter You Need (Calculations + Battery)

The size of the inverter required will be determined by the total wattage of the appliances you need to operate and the time they need to run. You also need to add a bit ...

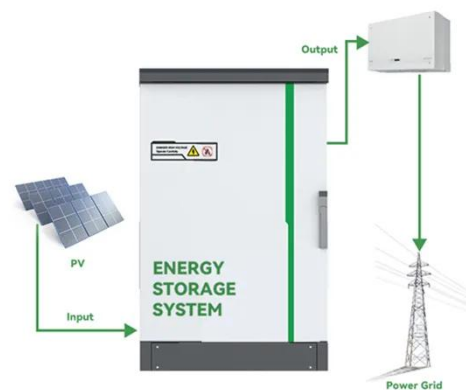


What size inverter is recommended for AC well pumps?

An inverter is a device that converts DC (direct current) electricity, typically stored in batteries, into AC (alternating current) electricity that can be used by household appliances. ...

How to choose right wire and circuit breaker for your solar inverter

FAQs What factors should I consider when choosing the right wire for my solar inverter? You should consider circuit voltage, current, wire length, and conductor material ...



What Size Inverter Do I Need

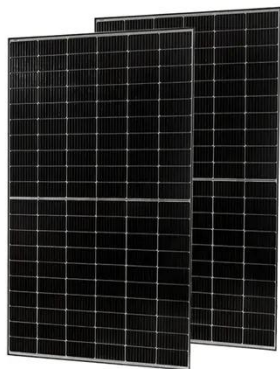
What Factors Should I Consider When



Selecting an Inverter? Your power consumption directly influences the size of the inverter you need. If your power consumption is ...

Inverter Size Calculator - self2solar

Determining the Inverter Size to Match the Solar Panel Array Determining the correct inverter size depends on your solar array's capacity and your household's power ...



Inverter Size Calculator , Find Your Perfect Power Match

How the Calculator Works Pick your appliances. Use the dropdown to add common devices--or enter your own custom items. Minimum Inverter Size: The smallest ...

Contact Us

For catalog requests, pricing, or partnerships, please contact:

BLINK SOLAR

Phone: +48-22-555-9876

Email: info@blinkartdesign.pl

Website: <https://blinkartdesign.pl>

Scan QR code to visit our website:

