

BLINK SOLAR

How many watts is a 40A solar cell



Overview

How many watts can a 40 amp solar controller handle?

Generally, a 40-amp solar controller can handle up to around 480 watts of solar panels. This is because the current and voltage of the solar panels must be balanced to ensure that the system operates efficiently and safely. If the solar panels are rated at a higher voltage, a 40-amp solar controller can handle more watts.

How many watts can a 40A charge controller handle?

Therefore, a 40A charge controller can handle a maximum of 480 watts of solar panels at 12 volts. However, if the battery bank is a different voltage, the maximum wattage the charge controller can handle would be different. You would need to use the appropriate voltage in the calculation.

How much solar power can a 60A charge controller handle?

A 60A PWM charge controller with a 12V battery can handle 756W of solar. If you have a 24V battery, the PWM charge controller can handle double that, 1512W. Seeing there was a high demand for a simplified guide to off-grid solar power, I decided to write a book about it.

What is a good fuse size for a 40 amp solar charge controller?

A recommended fuse size for a 40-amp solar charge controller would be around 50 amps. However, it's important to consult the manufacturer's specifications and guidelines to determine the appropriate fuse size for your specific charge controller and system wiring.

How many watts is a 40A solar cell



How Many Watts Can A 40 Amp Solar Controller Handle?

What is the max wattage for 40A? The maximum wattage that a 40A charge controller can handle depends on the voltage of the battery bank and the solar panels. Therefore, a 40A charge ...

RECOMMENDED SOLAR PANEL WATTAGE PER CHARGE ...

If you're looking to set up a solar system, then one thing you must take into account is the wattage of your solar panels. For optimum performance, it's important to have the right ...



Solar Panel Power Calculator



Solar Panel Calculator is an online tool used in electrical engineering to estimate the total power output, solar system output voltage and current when the number of solar panel units ...

How Many Watts Can A 40 Amp Solar Controller Handle?

How Many Watts Can A 40 Amp Solar Controller handle? How Many Panels Can A 40 Amp Charge Controller handle? What Is The Max Wattage For 40A? How Long Does It Take to Charge A 200ah Battery with 40 Amps? What Is The Price of The Mppt 40 Amp Charge Controller? What Size Fuse For A 40 Amp Solar Charge Controller? Reference The number of watts that a 40 amp solar controller can handle depends on several factors, including the voltage of the solar panels and the battery bank, as well as the wiring and overall design of the solar system. Generally, a 40-amp solar controller can handle up to around 480 watts of solar panels. This is because the current and voltage of the See more on solairworld hamiltonhydraulics



How many watts is a 40A solar cell - hamiltonhydraulics

How many watts can a 40A charge controller handle? Therefore, a 40A charge controller can handle a maximum of 480 watts of solar panels at 12 volts. However, if the battery bank is a ...

Solar panel Watts to Amps?

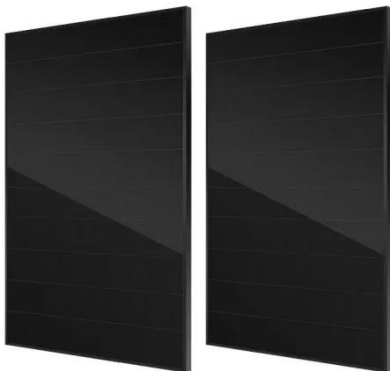
Now all we have to do is calculate how many solar panels we can use with this charge controller. To reach its 500 Watts of capacity you could use five 100-Watt

solar panels, ...



How to charge solar 40a , NenPower

For instance, if one anticipates a daily generation of 1800 watt-hours from the solar array, one would need to consider how many amp-hours that represents, factoring into the ...



How Many Watts can a 20-60 amp PWM Charge Controller ...

The following calculator will tell you how many watts of solar you can have with your 20, 30, 40, or even 60 Amp PWM solar charge controller.

How many watts can a 10, 20, 30, 40,50,60,80, 100 amp

24 volts X 10 amps = 240 watts.
Consequently, the amount of watts that

a 24 volt 10 amp charge controller can handle is less than 240 volts to avoid overloading it. How many ...



MPPT charge controller calculator: Find the right solar charge

This max output current value is calculated by dividing the maximum system wattage (in Watts) by the minimum charging voltage of the battery bank (in Volts). In other ...

How many watts is a 40A solar cell

How many watts can a 40A charge controller handle? Therefore, a 40A charge controller can handle a maximum of 480 watts of solar panels at 12 volts. However, if the battery bank is a ...



Contact Us

For catalog requests, pricing, or partnerships, please contact:

BLINK SOLAR

Phone: +48-22-555-9876

Email: info@blinkartdesign.pl

Website: <https://blinkartdesign.pl>

Scan QR code to visit our website:

