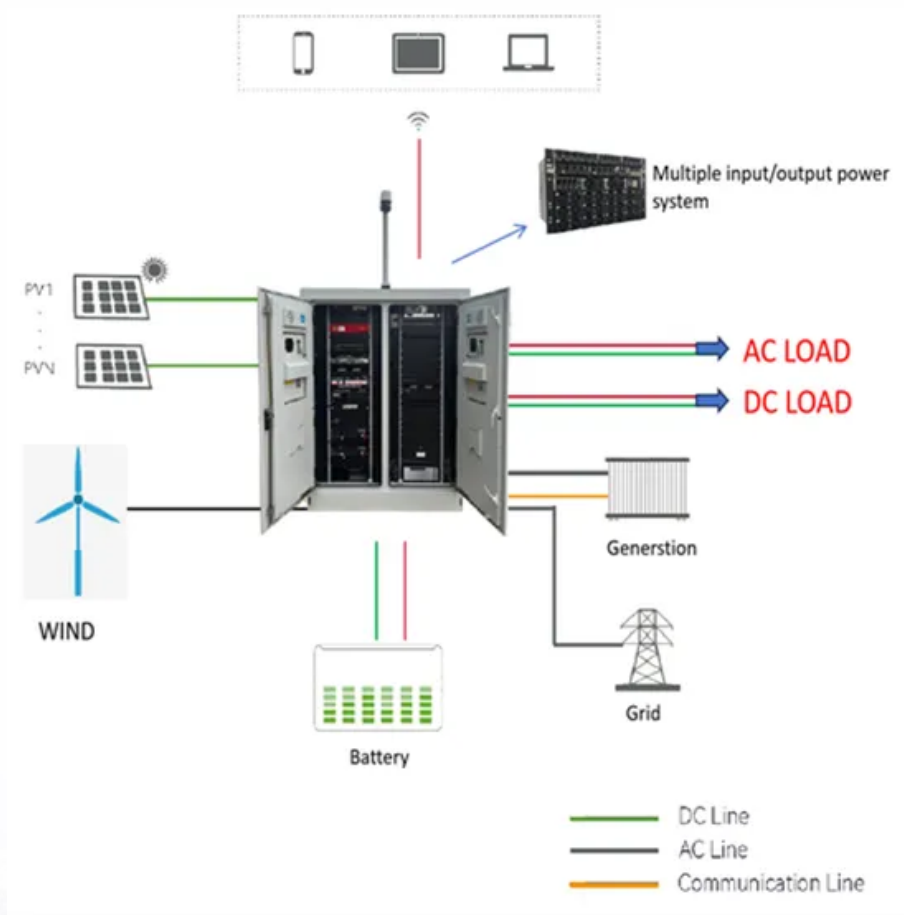


BLINK SOLAR

How much is the power of a 200 watt inverter in France



Overview

Before we go any further, we highly recommend that you choose a pure sine wave inverter. This type of inverter delivers high-quality electricity, similar to your utility company. This way, none of your appliance.

How much power does a 24V inverter draw?

To find out how much power an inverter draws without any load, multiply the battery voltage by the inverter no load current draw. A 1000 watt 24V inverter with a 0.4 no load current has a power consumption of 9.6 watts. $24V \times 0.4 = 9.6$ watts If you want to figure out the no load current in amps, divide the watts consumption by the battery voltage.

How much power does an inverter use?

The more modern the inverter, the more power you save. A 90% efficient inverter means it requires 10% more power than what its load requires. If you run a 300 watt load for instance, the inverter will need 330 watts. With larger inverters the drain could be up to 2 amps even a load.

How many amps does a 4000 watt inverter draw?

In the case of 4000 watts power of an inverter, if we take 12 volts as the voltage of the inverter, then the number of amps the inverter will draw will be $4000 \text{ watts} / 12 \text{ volts} = 333.33$ amps with 100% efficiency. However, there is a good possibility that your inverter has a battery with a voltage of more than 12 volts.

How many amps does a 750 watt inverter draw?

A 750 Watt Inverter typically pulls about 78.13 Amps. A 1000 Watt Inverter typically draws around 98 Amps. A 1500 Watt Inverter generally draws approximately 126 Amps. A 3000 Watt Inverter usually pulls around 294 Amps. A 4000 Watt Inverter commonly draws about 392.15 Amps. A 5000 Watt Inverter typically draws approximately 490 Amps.

How much is the power of a 200 watt inverter in France

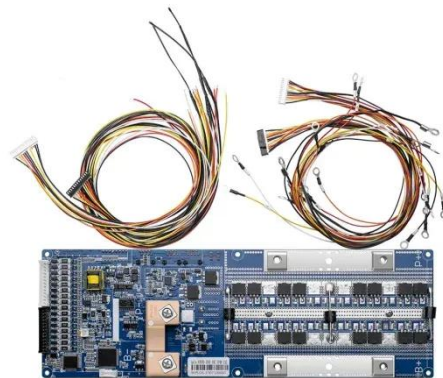


Electricity Calculator

Electricity Calculator Use the calculator below to estimate electricity usage and cost based on the power requirements and usage of appliances. The amount of time and power that each ...

24V 200 Watt Pure Sine Wave Inverter , inverter

24V 200W pure sine wave inverter is designed to deliver a "pure" sine wave output, meaning the AC waveform is smooth and continuous, closely resembling the quality of electricity provided ...



What can a 200 watt inverter run?

Looking for a 200 watt power inverter? Well, you're in the right place. Smaller 200W inverters are predominantly used in cars for travelers wanting to keep essential devices like phones, laptops ...

How Many Power, Volts and Amps does a 200w Solar Panel ...

A 200 watt solar panel produces 200 watts of power at its peak capacity. Over the course of one hour, that same solar panel would produce 200 watt-hours of energy if ...



How Many Power, Volts and Amps does a ...

A 200 watt solar panel produces 200 watts of power at its peak capacity. Over the course of one hour, that same solar panel would ...

How Many Amps Does a 100, 300, 500, 600, 750, 1000, 1500, ...

A 3000 Watt Inverter usually pulls around 294 Amps. A 4000 Watt Inverter commonly draws about 392.15 Amps. A 5000 Watt Inverter typically draws approximately 490 ...



What Will a 200 Watt Inverter Run?

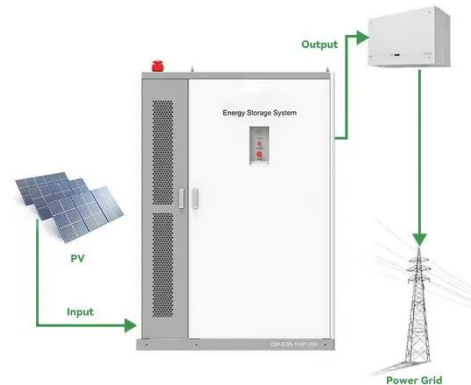
A 200-watt inverter provides 200 watts of continuous power and can run low-power AC electrical devices including cell

phones, game ...



What can a 200 watt inverter run?

Looking for a 200 watt power inverter? Well, you're in the right place. Smaller 200W inverters are predominantly used in cars for travelers wanting to ...



How Much Power an Inverter Draws with No Load

To find out how much power an inverter draws without any load, multiply the battery voltage by the inverter no load current draw. A 1000 watt 24V inverter with a 0.4 no load current has a ...

24V 200 Watt Pure Sine Wave Inverter

24V 200W pure sine wave inverter is designed to deliver a "pure" sine ...



What Size Inverter For A 200W Solar Panel Calculator

Understanding the precise inverter size you need for a 200W solar panel setup can be a daunting task. What Size Inverter for a 200W Solar Panel Calculator assists you in ...



How Much Power an Inverter Draws with No ...

To find out how much power an inverter draws without any load, multiply the battery voltage by the inverter no load current draw. A 1000 watt 24V ...

Outdoor Cabinet BESS

50 kWh/500 kWh Battery Storage System
Industrial and Commercial Energy Storage



- All in One**
Integrating battery packs
- High-capacity**
50-500kWh
- Degree of Protection**
IP54
- Operating Temperature Range**
-20~60°C(Derating above 50 °C)
- Intelligent Integration**
Integrated photovoltaic storage cabinet
- Rated AC Power**
50-100kW
- Altitude**
3000m(>3000m derating)

How Many Amps Does a 100, 300, 500, 600, ...

A 3000 Watt Inverter usually pulls around 294 Amps. A 4000 Watt Inverter

50KW modular power converter



commonly draws about 392.15 Amps. A 5000 Watt Inverter ...

what size inverter for 200 watt solar panel

Selecting the appropriate inverter for your 200-watt solar panel system is crucial for maximizing efficiency and ensuring reliable power delivery. By understanding the different ...



50KW modular power converter



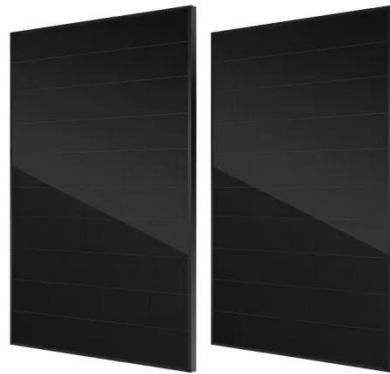
What Will a 200 Watt Inverter Run?

A 200-watt inverter provides 200 watts of continuous power and can run low-power AC electrical devices including cell phones, game consoles, DVD players, laptops, electric ...

The Only Inverter Size Chart You'll Ever Need

We have created a comprehensive inverter size chart to help you select the

correct inverter to power your appliances.



Contact Us

For catalog requests, pricing, or partnerships, please contact:

BLINK SOLAR

Phone: +48-22-555-9876

Email: info@blinkartdesign.pl

Website: <https://blinkartdesign.pl>

Scan QR code to visit our website:

