

BLINK SOLAR

How to classify base station communication equipment models



Overview

What are base station classes?

Base station classes refer to the categorization of base stations into wide area, medium range, and local area types, each defined by specific RF requirements and deployment scenarios, such as minimum distance to devices and power output limits.

What are the components of a base station?

The base station will have one or more RF antennas installed to transmit and receive RF signals from other devices. The block diagram of a base station typically includes the following key components: Baseband Processor: The baseband processor too deals with different communication protocols and interfaces with mobile network infrastructure.

What is a mobile base station?

A mobile base station, also called a base transceiver station (BTS), is a fixed radio transceiver in any mobile communication network or wide area network (WAN). The base station connects mobile devices to the network and routes them to other terminals in the network or to the core network of a mobile operator. [Read more Explore Mobile base.](#)

What are the different types of base stations?

Some basic types of base stations are as follows: Macro-base stations are tall towers ranging from 50 to 200 feet in height, placed at strategic locations to provide maximum coverage in a given area. Those are equipped with large towers and antennas that transmit and receive radio signals from wireless devices.

How to classify base station communication equipment models



4. Basic Configuration of Base Stations , About DOCOMO

The basic base station equipment for digital mobile communications systems consists of amplifiers (AMP) to amplify the transmission and reception signals to desired levels, modems ...

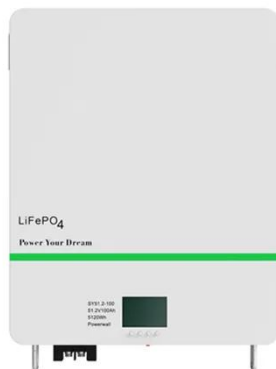
A guide to choosing Base Station Antennas

Conclusion Sadly, there isn't a silver bullet when it comes to solving 5G roll out challenges. There isn't a one size fits all or a single ...



5G Base Station

5G base station is the core equipment of 5G network, which provides wireless coverage and realizes wireless signal transmission ...



classify according to or based on? , WordReference Forums

Classify your classmates according to/based on their personality. We can classify classmates according to/based on their common features, such as personality or academic ...



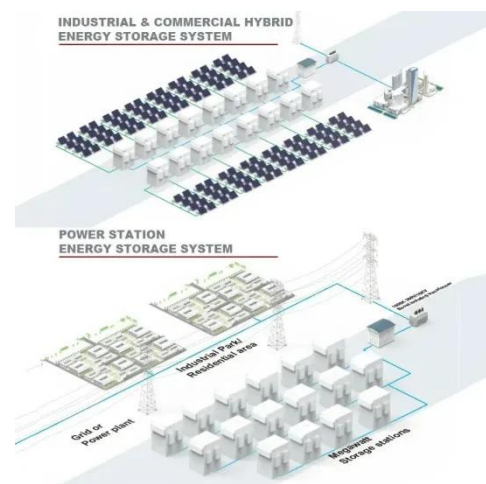
Classify into or classify as

Hello everyone: I'd like to know which of the following sentences is correct or more appropriate: a) Classify the following animals into vertebrates and invertebrates. b) Classify the ...



base station in 5g

A 5G base station is a complex system that integrates advanced RF technology, digital signal processing, and network ...



Base Station Equipment - Types and Applications of Mobile Communication

DBS3900 Dual-Mode Base Station is the



fourth generation base station developed by Huawei. It features a multi-mode modular design and supports three working modes: GSM mode, ...

classified into or classified as

In the following sentence, can I use into and as interchangeably? If not, can you tell me the difference? The students in the class can be classified into Asian and non-Asian. or ...



Base Station Design for Wireless Communications Engineers

The journey towards a smarter, more efficient network starts with innovative base station design today. This comprehensive guide underscores the evolving role of wireless communications ...



"categorize" and "classify" , WordReference Forums

- The books in the library are classified according to subject. - Patients are

classified into three categories. - All rural settlements were classified according to their size. - ...



Base Station's Role in Wireless Communication Networks

What is a base station? A base station is a critical component of wireless communication networks. It serves as the central point of a network that connects various devices, such as ...

Mobile base station , Application

Compatibility for integrating base transceiver stations between different vendors' equipment. Scalability in ensuring that the base station can scale ...



does garment include shoes and accessories?

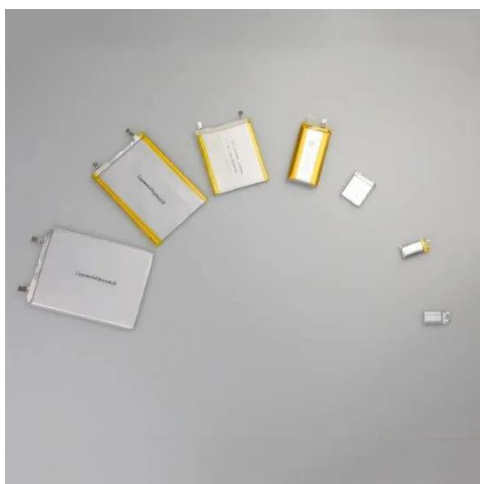
The BBC article is about the fashion industry, which includes all sorts of

things beyond what one might classify as 'clothing' or 'garments' in the narrowest sense. ...



TS 144 001

TECHNICAL SPECIFICATION Digital cellular telecommunications system (Phase 2+) (GSM); Mobile Station - Base Station System (MS - BSS) interface; General aspects and ...



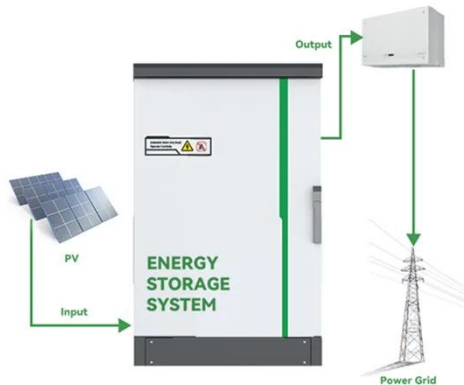
Basics of Satellite Communications

A satellite communications (satcom) system maybe looked at as comprising of three parts "space segment", the "ground segment" and the transmission medium (the space ...

Small cell base station design resources , TI

View the TI Small cell base station block diagram, product recommendations,

reference designs and start designing.

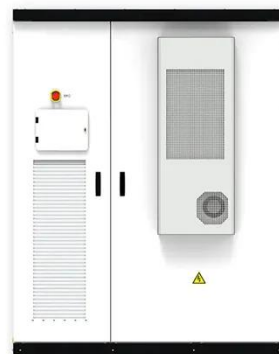


Key Mobile Network Equipment and Functions

A Base Transceiver Station (BTS) is a critical piece of equipment in a mobile network, responsible for handling communication ...

Classify in vs. Classify into

"I am going to classify these faults into 4 categories: This is the most precise, and uses the word classify to mean "divide into classes"; it is what you would use if you were ...



Simulation and Classification of Mobile Communication Base Station

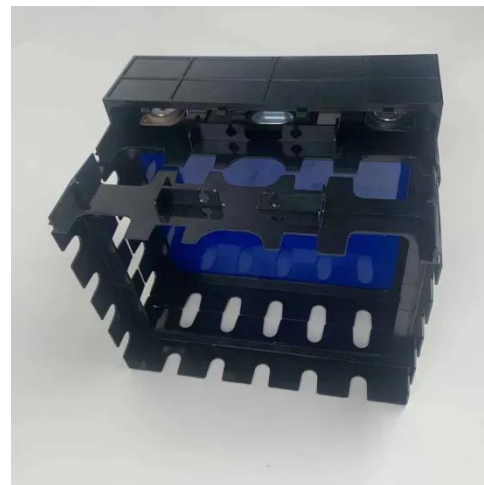
In recent years, with the rapid



deployment of fifth-generation base stations, mobile communication signals are becoming more and more complex. How to identify and classify ...

5G NR Base Station Classes: Type 1-C, Type 1 ...

Learn about the different classes of 5G NR base stations (BS), including Type 1-C, Type 1-H, Type 1-O, and Type 2-O, and their specifications.



Base Stations

The present-day tele-space is incomplete without the base stations as these constitute an important part of the modern-day scheme of wireless communications. They are ...

Channel Models for Wireless Communication Systems

Wireless communication has evolved significantly, over the past several

decades, to meet the ever-growing demand for high data rates over the wireless medium. Systems have ...



highly, moderately, and lowly group-oriented learners

Can I classify the levels as highly group-oriented, moderately group-oriented, and lowly group-oriented? I am not sure about "lowly," but I am unable to think up an alternative.

Base Station Class

Base station classes refer to the categorization of base stations into wide area, medium range, and local area types, each defined by specific RF requirements and deployment scenarios, ...



Mobile base station , Application

Compatibility for integrating base transceiver stations between different vendors' equipment. Scalability in

ensuring that the base station can scale to support multiple and new protocols to ...



Key Mobile Network Equipment and Functions

A Base Transceiver Station (BTS) is a critical piece of equipment in a mobile network, responsible for handling communication between mobile devices and the network.



Hindi, Urdu: Sagar vs Saagar

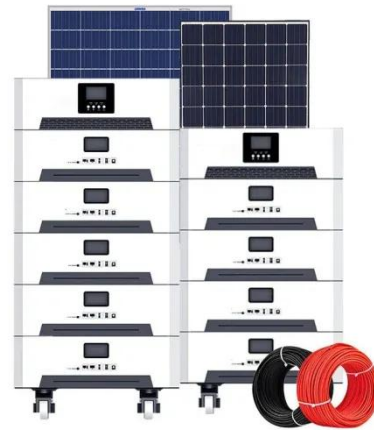
Hey guys, I wanted to discuss the later work as it is used today in speech. I would classify myself first as a(n) Hindi speaker, so for the former word I would say 'samudra' or ...

Exploring GSM Network Components: ...

2. Base Station Subsystem (BSS) The Base Station Subsystem (BSS) is tasked

with facilitating wireless communication

...



5G base station architecture, Part 1: Evolution

The other recent big 5G meeting took place shortly thereafter on April 14-15 in Palo Alto, CA. This was called the 5G Forum USA ...

A person with parents from different countries / races

what do you call a person who has two races mixed as their parents are from different races? I.e. an American mother and a German father.



Contact Us

For catalog requests, pricing, or partnerships, please contact:

BLINK SOLAR

Phone: +48-22-555-9876

Email: info@blinkartdesign.pl

Website: <https://blinkartdesign.pl>

Scan QR code to visit our website:

