

BLINK SOLAR

Is the battery of an outdoor base station big



Overview

In order to extend the life span of standby battery for outdoor base station, a semiconductor thermoelectric device/phase change materials (PCMs) coupled battery thermal management system (BTMS), a.

Which battery is best for telecom base station backup power?

Among various battery technologies, Lithium Iron Phosphate (LiFePO₄) batteries stand out as the ideal choice for telecom base station backup power due to their high safety, long lifespan, and excellent thermal stability.

What makes a telecom battery pack compatible with a base station?

Compatibility and Installation Voltage Compatibility: 48V is the standard voltage for telecom base stations, so the battery pack's output voltage must align with base station equipment requirements. Modular Design: A modular structure simplifies installation, maintenance, and scalability.

How do you protect a telecom base station?

Backup power systems in telecom base stations often operate for extended periods, making thermal management critical. Key suggestions include:
Cooling System: Install fans or heat sinks inside the battery pack to ensure efficient heat dissipation.

Why is backup power important in a 5G base station?

With the rapid expansion of 5G networks and the continuous upgrade of global communication infrastructure, the reliability and stability of telecom base stations have become critical. As the core nodes of communication networks, the performance of a base station's backup power system directly impacts network continuity and service quality.

Is the battery of an outdoor base station big



Telecom Base Station Backup Power Solution: Design Guide

...

Discover the 48V 100Ah LiFePO4 battery pack for telecom base stations: safe, long-lasting, and eco-friendly. Optimize reliability with our design guide.

BESS (Battery Energy Storage Systems)

Boost energy storage with Industrial/Commercial & Home BESS, powered by lithium batteries. Ensure grid stability, savings, & backups. Plus, power base stations with Huijue Energy

...



How Big Is the Outdoor Energy Storage Battery? A Complete

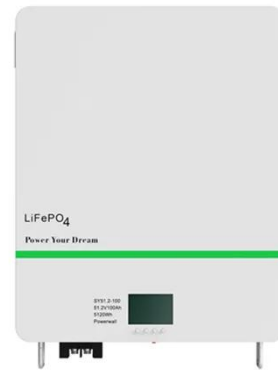
...

The outdoor energy storage battery size you need depends on whether you're powering a weekend camping trip or running off-grid security cameras through winter. Think of ...



How to Select the Best ESTEL Battery Backup for Base Stations

Choose the best telecom battery backup systems by evaluating capacity, battery type, environmental adaptability, maintenance, and scalability for base stations.



✓ IP65/IP55 OUTDOOR CABINET

✓ WATERPROOF OUTDOOR CABINET

✓ 42U/27U

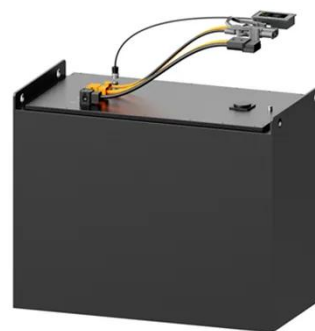
✓ OUTDOOR BATTERY CABINET

Outdoor base station battery module

Big Data Product With the widespread deployment of its IDC hardware systems to all over the world, the shipments of computing power and communication centers rank among the top ...

How much energy storage battery is used in base stations?

These batteries enable base stations to operate efficiently, particularly when coupled with solar or wind energy systems. As the demand for connectivity rises, the efficiency ...



Telecom Base Station Backup Power Solution: ...



Discover the 48V 100Ah LiFePO4 battery pack for telecom base stations: safe, long-lasting, and eco-friendly. Optimize reliability with ...

Thermal management of standby battery for outdoor base station ...

Abstract In order to extend the life span of standby battery for outdoor base station, a semiconductor thermoelectric device/phase change materials (PCMs) coupled battery ...



What Size Battery for Base Station? , Huijue Group E-Site

Why Battery Sizing Isn't Just About Numbers The 2023 Ericsson Mobility Report shows base stations now handle 450% more data traffic than in 2018. Traditional VRLA batteries designed ...



Base Station Energy Storage

Highjoule base station energy storage systems typically use LiFePO₄ (LFP)

batteries for their safety, stability, long lifecycle, and high-temperature tolerance, making them ideal for outdoor ...



Which Battery Is Best for Outdoor Power Stations?

When selecting a battery for outdoor power stations, it's essential to understand that the battery is the core factor that determines the unit's performance. Whether for camping, hiking, or ...

Contact Us

For catalog requests, pricing, or partnerships, please contact:

BLINK SOLAR

Phone: +48-22-555-9876

Email: info@blinkartdesign.pl

Website: <https://blinkartdesign.pl>

Scan QR code to visit our website:

