

## BLINK SOLAR

# Is the signal you dial related to the 5g base station



✓ IP65/IP55 OUTDOOR CABINET

✓ IP54/55

✓ OUTDOOR ENERGY STORAGE  
CABINET

✓ OUTDOOR MODULE CABINET



## Overview

---

How does a 5G base station work?

5G base stations operate by using multiple input and multiple output (MIMO) antennas to send and receive more data simultaneously compared to previous generations of mobile networks. They are designed to handle the increased data traffic and provide higher speeds by operating in higher frequency bands, such as the millimeter-wave spectrum.

Can a 5G NR base station be deployed on a network?

Before a 5G new radio (NR) base station or user equipment (UE) can be released onto the market, it must pass all necessary tests. Unless the products are 3GPP-compliant, they cannot be deployed on networks. In Release 15, 5G NR is included as well as some new features for long-term evolution (LTE).

How does 5G work?

5G base stations often employ beamforming techniques to focus the radio waves in specific directions, optimizing coverage and capacity. This is achieved by adjusting the phase and amplitude of the signals transmitted by multiple antennas. 5G operates in a range of frequency bands, including sub-6 GHz (mid-band) and mmWave (millimeter-wave) bands.

How do I know if my 5G signal is good?

A good 5G experience depends on these values: Instead of relying on bars, use these methods to get precise 5G signal values: On Android: Dial `***#4636***` and check "Phone Information". On iPhone: Use the "Field Test Mode" by dialing `*3001#12345#*`. Distance from the tower: The farther you are, the weaker the signal.

## Is the signal you dial related to the 5g base station

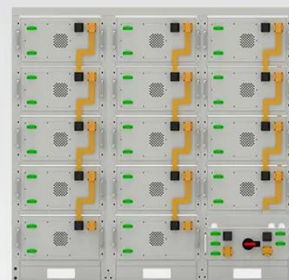
### An Introduction to 5G and How MPS Products Can ...



5G Network Architecture The base station is a critical component for 5G operation. The base station is comprised of two main components: the active antenna unit (AAU) and the ...

### Understanding 5G Signal Strength: A Simplified Guide

How to Check Your 5G Signal Strength  
Instead of relying on bars, use these methods to get precise 5G signal values:  
On Android: Dial **\*##\*#4636#\*#\*** and check "Phone ...

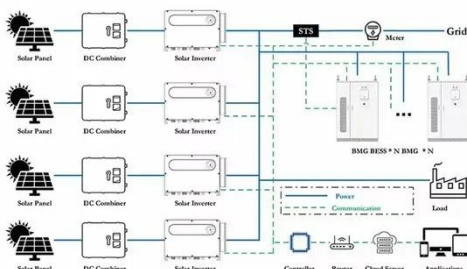


**Battery String-S224**

- 1C Charge/Discharge
- Easy configuration and maintenance
- Power supply can be single battery string or parallel battery strings

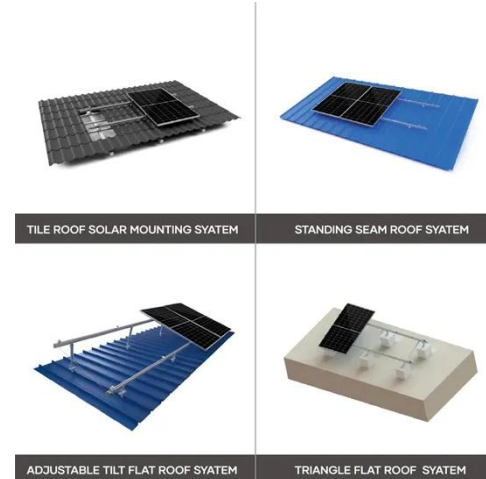
### What is a 5G base station?

A 5G Base Station, also Known as A GNB (Next-Generation NodeB), is a fundamental component of the fifth-generation (5G) Wireless Network ...



## 5G Base Station Antenna: A Comprehensive ...

With the emergence of 5G networks, choosing the right 5G base station antenna is more important than ever. This guide provides a deep dive into ...



## What is a 5G base station?

A 5G Base Station, also Known as A GNB (Next-Generation Nodeb), is a fundamental component of the fifth-generation (5G) Wireless Network Infrastructure. It serves as a Critical Node for the ...

## What is a 5G Base Station?

A 5G base station is a critical component in a mobile network that connects devices, such as smartphones and IoT (Internet of Things) gadgets, to the core network and ...



## What is a 5G Base Station?

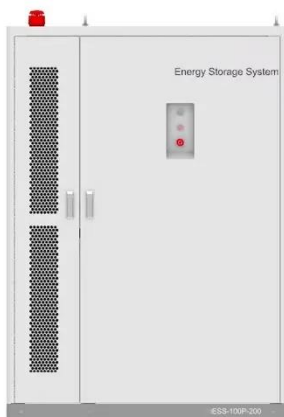
A 5G base station is a critical component in a mobile network that connects devices, such as smartphones and IoT

(Internet of Things) ...



## Signal Analysis in 5G NR Base Station Transmitters: Part 1

A base station can be configured in one of four ways, depending on whether the tests are conducted or radiated, and the configuration of the station. Type 1-C refers to NR ...



## Signal Analysis in 5G NR Base Station ...

A base station can be configured in one of four ways, depending on whether the tests are conducted or radiated, and the ...

## 5G Base Station Antenna: A Comprehensive Guide to ...

With the emergence of 5G networks, choosing the right 5G base station

antenna is more important than ever. This guide provides a deep dive into everything you need to know about ...



## Learn What a 5G Base Station Is and Why It's Important

A 5G base station is the heart of the fifth-generation mobile network, enabling far higher speeds and lower latency, as well as new levels of connectivity. Referred to as ...

### 5g base station

A 5G base station is a complex system that combines advanced antenna technologies, digital signal processing, and network architecture to provide high-speed, low ...



## Understanding 5G Signal Strength: A ...

How to Check Your 5G Signal Strength  
Instead of relying on bars, use these

## ESS



methods to get precise 5G signal values:  
On Android: ...

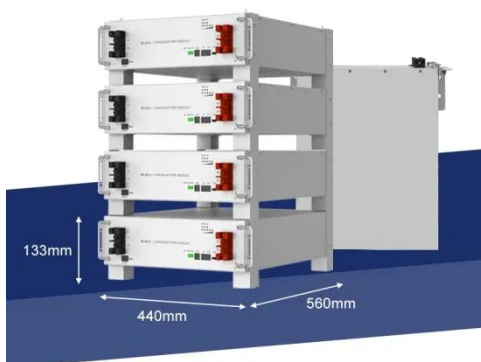
## 5G Timing Magic: How Your Phone Knows When to Listen CSI-RS Signal

Your phone needs to check CSI-RS signal regularly to keep track of the channel conditions. But, how can your phone knows exactly when to check CSI-RS signal from 5G ...



## What Is a Base Station? Exploring the Core of 5G Networks ...

Base stations are the core of mobile communication, and with the rise of 5G, thermal and energy challenges are increasing. This article explains the definition, structure, ...



## Contact Us

For catalog requests, pricing, or partnerships, please contact:



**BLINK SOLAR**

Phone: +48-22-555-9876

Email: [info@blinkartdesign.pl](mailto:info@blinkartdesign.pl)

Website: <https://blinkartdesign.pl>

*Scan QR code to visit our website:*

