

BLINK SOLAR

Latvian double-glass bifacial monocrystalline silicon solar panels



Overview

Which bifacial solar panels are best?

Best suited for specialized environments. Monofacial solar panels from Solardeland, such as the Mono 630W, offer a cost-effective solution for traditional installations, while Solardeland bifacial double-glass panels excel in environments that allow for bifacial energy capture.

Why do bifacial solar panels increase power conversion efficiency?

The increase in the bifacial silicon solar cells is due to the reduction in silicon wafer thickness and the increase in the transparency of the panels. Under better albedo and proper mounting angles, a typical bifacial solar panel is expected to show 50% more power conversion efficiency than the monofacial counterpart.

Are bifacial solar panels better than monofacial?

Under better albedo and proper mounting angles, a typical bifacial solar panel is expected to show 50% more power conversion efficiency than the monofacial counterpart. Bifacial silicon solar cells are monofacial cells with a back surface opened with a dielectric passivated layer, and a polymer back cover is replaced with a transparent sheet.

What is a monofacial solar panel?

This is precisely achieved from monofacial solar cells to bifacial solar cells. As discussed in the previous section, the monofacial solar panels are made up of either a p - or n-type silicon wafer layer covered on both sides with Ethylene Vinyl Acetylene (EVA), a polymer material kept as the cover to protect the silicon wafer.

Latvian double-glass bifacial monocrystalline silicon solar panels

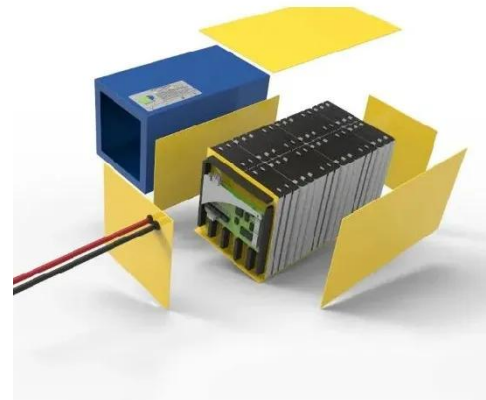


Bifacial Solar Panels Materials & Functionality ...

Bifacial solar panels revolutionize energy capture by utilizing sunlight from both sides. With innovative materials like monocrystalline ...

Monocrystalline Silicon Solar Module/Panel, Monocrystalline Silicon ...

Sunrise, as one of the top bifacial solar panel manufacturers, sells 380 watt-500watt monocrystalline solar panels. And Sunrise provides not only 440 and 450-watt solar panels but ...



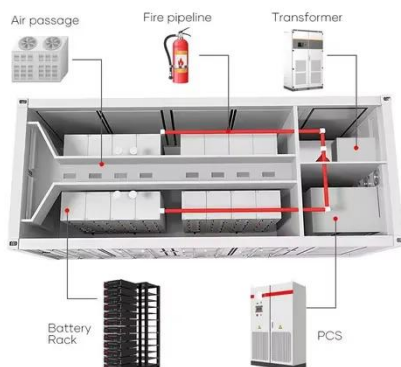
Ja High Efficiency Bifacial Solar Panel Double Glass 550W ...

Ja High Efficiency Bifacial Solar Panel Double Glass 550W Half Cell Monocrystalline Silicon Solar Panel Price Panels, Find Details and Price about Solar Panel ...



Commercial bifacial silicon solar cells

The increase in the bifacial silicon solar cells is due to the reduction in silicon wafer thickness and the increase in the transparency of the panels. Under better albedo and proper ...



Ja High Efficiency Bifacial Solar Panel Double Glass 550W ...

Ja High Efficiency Bifacial Solar Panel Double Glass 550W Half Cell
Monocrystalline Silicon Solar Panel 600W 605W US\$0.11 - 0.15 100,000 watt (MOQ) Product ...

SANGNI Transparent Bifacial Glasses Solar Panels Monocrystalline

1. Material Technology With a double-glass bifacial structure and monocrystalline silicon cells, you can achieve enhanced durability and energy capture from both sides, outperforming traditional ...



Raytech Double-Glass Modules , Bifacial Solar ...



Raytech as a manufacturer and supplier of high-quality double glass solar panel, solar module, and solar panel, provide you with high ...

700W 710W 720W Bifacial Double Glass Half Cell Monocrystalline Solar

700W 710W 720W Bifacial Double Glass Half Cell Monocrystalline Solar Energy Sun Power Solar Panel, Find Details and Price about Solar Panel Silicon Solar Panels from ...

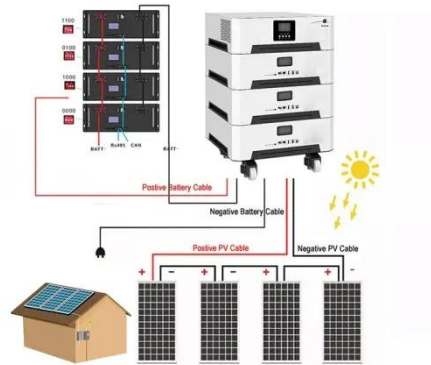


Advantages and Disadvantages of Monofacial vs. Bifacial Double Glass

Higher upfront cost. Heavier and more complicated to install. Best suited for specialized environments. Conclusion Monofacial solar panels from Solardeland, such as the ...

Raytech Double-Glass Modules , Bifacial Solar Modules , Raytech Double

Raytech as a manufacturer and supplier of high-quality double glass solar panel, solar module, and solar panel, provide you with high-quality products and solar module ...



What is a Bifacial Solar Panel? A Deep Dive into Double-Sided Solar

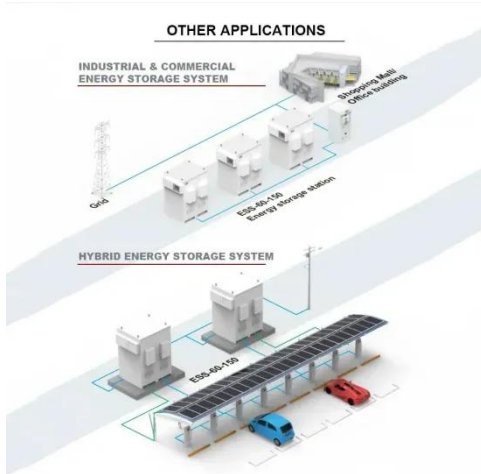
Bifacials with a double-glass design are more durable, offering enhanced protection against environmental factors like moisture and degradation, potentially leading to a longer ...

Double-glass bifacial monocrystalline photovoltaic panel ...

An inherent advantage provided by this dual-sided design is an increase in the overall potential energy yield of a bifacial solar panel installation. particularly those made ...



Bifacial Solar Panels vs Monocrystalline Solar Panels



At the heart of the green energy revolution, are solar panels, which convert the sun's rays into electricity. Among the various types of solar panels available, bifacial and ...

BIFACIAL SERIES - GLASS-TO-GLASS PHOTOVOLTAIC ...

ECONOMICS Bifacial G2G technology is a turning point in photovoltaic (PV) system technology. It replaces costly single-axis and double-axis mechanical tracking systems with ...



Bifacial Solar Panels Materials & Functionality Explained

Bifacial solar panels revolutionize energy capture by utilizing sunlight from both sides. With innovative materials like monocrystalline silicon and transparent backsheets, they ...

Contact Us

For catalog requests, pricing, or partnerships, please contact:

BLINK SOLAR

Phone: +48-22-555-9876

Email: info@blinkartdesign.pl

Website: <https://blinkartdesign.pl>

Scan QR code to visit our website:

