

BLINK SOLAR

Malawi energy storage configuration plan



Overview

What is the Malawi energy compact?

mary of the Malawi Energy CompactThis document outlines the Government of Malawi's National Compact for Energy, developed in alignment with the Africa Region Energy Compact and the United Nations Energy Compact. It sets out Malawi's vision and commitment to increasing access to electricity, promoting clean cooking solutions, and increasing the.

What is the Malawi integrated energy planning tool?

The Malawi Integrated Energy Planning Tool is an online, publicly available, interactive, and user-friendly data visualization platform that equips Malawian policy makers and energy practitioners with data and insights to make informed decisions on strategies and operations to advance energy access in the country.

Can Malawi achieve universal energy access by 2030?

The tool presents interactive and downloadable data from Malawi based on integrated energy planning analyses to achieve universal energy access in the country by 2030.

What is the National Compact for Malawi?

OR MALAWI#PoweringAfricaPreambleThis National Compact for Malawi follows the approach in the Africa Region Energy Compact and reflects the commitment of the Government of Malawi to critical actions needed to achieve affordable, reliable, and clean energy services and substantially increase the share of

Malawi energy storage configuration plan

NATIONAL ENERGY COMPACT FOR MALAWI



Executive Summary of the Malawi Energy Compact This document outlines the Government of Malawi's National Compact for Energy, developed in alignment with the Africa ...

Executive Summary

Procurement of energy infrastructure projects in developing country public utilities require adequate planning to minimize delays and realize efficiency, transparency, ...

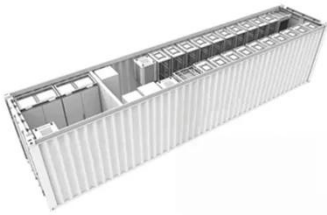
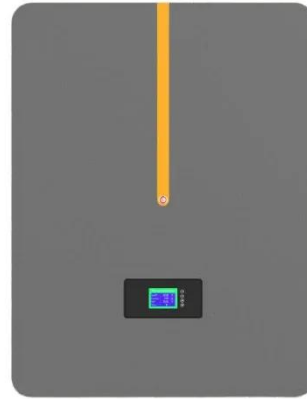


Malawi Integrated Energy Planning Tool

The Malawi Integrated Energy Planning Tool is an online, publicly available, interactive, and user-friendly data visualization platform that equips Malawian policy makers ...

Strategies for Procuring Solar PV and Grid-Scale Battery ...

Given the small size of Malawi's grid, relatively high system losses, and its relatively modest electricity demand, the government is interested in exploring the ...



GEAPP, Government of Malawi launch the construction of 20 ...

GEAPP's first battery energy storage system (BESS) project in Africa, a 20 MW BESS in Malawi's capital city, Lilongwe.

GEAPP, Government of Malawi launch the ...

GEAPP's first battery energy storage system (BESS) project in Africa, a 20 MW BESS in Malawi's capital city, Lilongwe.



Malawi battery energy storage project

Barbados, Belize, Egypt, Ghana, India, Kenya, Malawi, Mauritania, Mozambique,

Nigeria, and Togo committed to the Battery Energy Storage Systems (BESS) long project lead times, ...



Malawi's Energy Storage Revolution: Powering a Sustainable ...

Malawi's energy storage industry is at a crossroads. With only 18% of its population connected to the national grid and frequent 12-hour daily blackouts in urban centers, the country's economic ...



Malawi energy storage solution requirements

This article explores Malawi's latest energy storage configuration requirements, industry trends, and actionable insights for businesses and policymakers. Learn how to align ...



Malawi energy storage configuration policy requirements

The Malawi Integrated Energy Planning Tool is an online, publicly available,

interactive, and user-friendly data visualization platform that equips Malawian policy makers and energy ...



CHAKWERA LAUNCHES LANDMARK BATTERY ENERGY STORAGE ...

The BESS project, valued as a ground-breaking initiative, boasts a 20-megawatt battery energy storage system, a first-of-its-kind in Africa. Scheduled to be fully operational by ...

Contact Us

For catalog requests, pricing, or partnerships, please contact:

BLINK SOLAR

Phone: +48-22-555-9876

Email: info@blinkartdesign.pl

Website: <https://blinkartdesign.pl>

Scan QR code to visit our website:

