

**BLINK SOLAR**

# Size of solar panels installed in the factory



## Overview

---

How do I size a solar panel system for commercial and industrial applications?

Sizing a solar panel system for commercial and industrial applications requires a comprehensive approach that considers energy consumption, solar resources, space constraints, and financial incentives. At MGetEnergy, we specialize in designing and implementing customized solar solutions that meet the unique needs of each business.

What is solar panel sizing?

1. General Solar Panel System Sizing n Solar panel system sizing involves determining the number and type of solar panels needed to meet the energy demands of a commercial or industrial facility. This process requires evaluating factors such as energy consumption, solar resource availability, and the physical space available for installation.

How much space do industrial solar panels need?

Depending on the efficiency of the panels, 4-5 acres of open land or 10,000+ sq. ft. of rooftop space are typically required. Q2: Is net metering available for industrial solar?

.

How big are industrial solar panels?

Industrial panels are significantly larger than common solar panel sizes used in residential settings. Residential panels typically measure around 65 inches by 39 inches, with 60 cells, producing between 250 to 300 watts.

## Size of solar panels installed in the factory



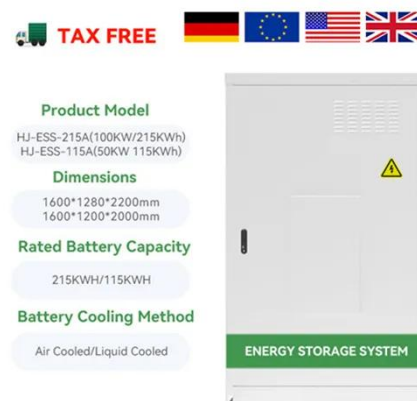
### Solar Panel System Sizing for Commercial and Industrial ...

Key components include: Solar Panels: High-efficiency panels are favored for commercial and industrial applications as they generate more power per square meter. ...

### What is Industrial Size Solar Panel? A Comprehensive Guide

...

Understanding Industrial Size Solar Panels Key Features of Industrial Solar Panels Industrial solar panels are designed for large-scale energy production, making them suitable ...



### A Complete Guide to Sizing Solar Panels for Factory Use

Learn to size solar panels for your factory. Cut costs, boost efficiency, and ensure reliable power with our complete industrial guide.

## Industrial solar panel size

Commercial and industrial solar panels are often larger than residential panels. The average solar panel size in a commercial application is approximately 78 inches by 39 inches with 96 cells. ...

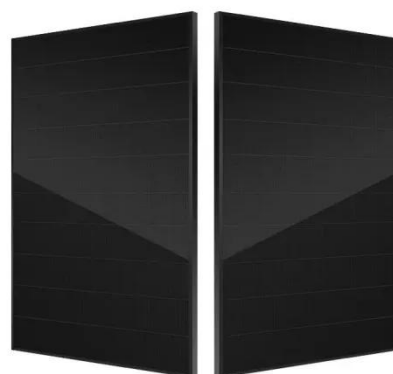


## Solar Power for Factory, Warehouse & Industrial Buildings

Why harness solar energy for your factory or industrial building roof? The roofs of factories are often the ideal place to install solar panels. As factories are energy-intensive ...

## Industrial Solar Panel Installation: Complete Guide for 2025

Explore everything about industrial solar panel installation--benefits, process, setup tips, and long-term ROI for your manufacturing or commercial facility in 2025.



## Solar Panel Sizes, Dimensions & Wattage for Businesses , GSE



Looking to install solar panels for a business or industrial facility one of the most important factors to consider is the size of the solar panel required to meet your energy needs effectively. ...

---

## A Complete Guide to Commercial and Industrial Solar Panels

In recent years, solar energy has transformed from a futuristic concept into a practical solution for businesses across the globe. As energy demands grow and climate ...



---

## Contact Us

For catalog requests, pricing, or partnerships, please contact:

### **BLINK SOLAR**

Phone: +48-22-555-9876

Email: [info@blinkartdesign.pl](mailto:info@blinkartdesign.pl)

Website: <https://blinkartdesign.pl>

*Scan QR code to visit our website:*

