

BLINK SOLAR

Solar container lithium battery pack charges too slowly



Overview

Why are lithium ion batteries so hard to charge?

Temperature Sensitivity: Lithium-ion batteries are sensitive to temperature extremes. Charging in excessively hot or cold conditions can affect the chemical reactions within the battery, slowing down the charging process.

Internal Resistance: Due to wear and tear, internal resistance within a lithium-ion battery can increase over time.

Why do lithium ion batteries take so long to charge?

Their ability to hold a charge diminishes as they age, leading to slower charging speeds. Temperature Sensitivity: Lithium-ion batteries are sensitive to temperature extremes. Charging in excessively hot or cold conditions can affect the chemical reactions within the battery, slowing down the charging process.

How does fast charging affect the life of a lithium battery?

Prolonged rapid charging can impact the lifespan of the lithium battery. Fast charging inputs a large current into the battery instantaneously and repetitive use of this mode diminishes the battery's ability to recover, reducing the total number of charge and discharge cycles.

Which lithium batteries can be charged 1C?

At present, LiTime lithium batteries capable of accommodating 1C charging include the 12V 100Ah Max, 36V 55Ah lithium trolling motor battery, and the batteries utilized in golf carts. For other batteries, we still advocate using 0.2C for charging. LiTime 12V 100Ah Max Lithium Deep Cycle Battery

Solar container lithium battery pack charges too slowly



Data-Backed Reasons Portable Solar Charging Slows Down

Bob Wu is a Solar Engineer at Anern specializing in lithium battery and energy storage systems. With over 15 years of experience, he designs and optimizes sustainable ...

Why Is My Solar Battery Discharging So Quickly: Common ...

Discover why your solar battery may be discharging quickly in our insightful article. Explore key factors such as insufficient solar input, high energy consumption, and battery age. ...

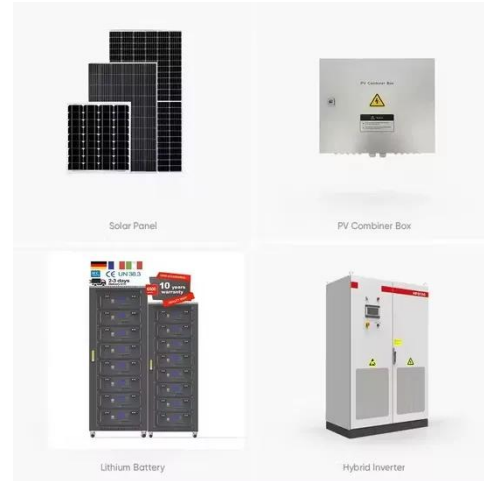


Common Solar Battery Issues and Fixes

Fix common solar battery issues like overheating, capacity fade & sulfation with expert tips. Boost PV storage performance today!

Why is my LiFePo4 pack charging slowly?

The normal charge is at first constant current, then once the voltage is at the charge level, the current starts dropping off. What is your battery voltage when it is charging ...



Common Lithium Battery Issues and How To Fix Them

Capacity loss Over-discharging is usually the root cause of the capacity decline in lithium batteries. In case you over-discharge your battery, it's better to use a smart charger for ...

How to Repair a Lithium Battery Pack with Simple Troubleshooting Tips

How to repair a lithium battery pack by troubleshooting charging, swelling, and voltage issues. Follow ...



Why Is My Lithium Battery Draining So Fast? 10 Common ...

Identify why your Outbax lithium battery drains quickly with 10 common causes



including phantom loads, incorrect charging, temperature issues, and ageing cells. Apply ...

Understanding Slow Battery Charging: Causes and Quick Fixes

Why is my battery charging slowly? Slow charging disrupts routine. Learn common causes and tips to boost lithium-ion battery speed.



Lithium Battery Troubleshooting: Fix Charging & Common ...

Discover effective Lithium Battery Troubleshooting. Learn how to fix charging issues, low voltage errors, and BMS faults. Trusted tips from Muller Energy NSW.



Understanding Slow Battery Charging: Causes ...

Why is my battery charging slowly? Slow charging disrupts routine. Learn common

causes and tips to boost lithium-ion battery speed.



Charging Speed of Lithium Battery: Slow ...

This article aims to provide comprehensive insights into the charging speed of lithium batteries, comparing the benefits and drawbacks of slow ...

Charging Speed of Lithium Battery: Slow Charging VS Fast ...

This article aims to provide comprehensive insights into the charging speed of lithium batteries, comparing the benefits and drawbacks of slow charging versus fast charging.



Why Is My Lithium Battery Draining So Fast?

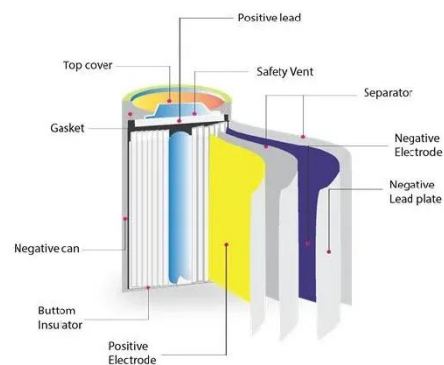
Identify why your Outbax lithium battery drains quickly with 10 common causes

including phantom loads, incorrect charging, ...



How to Repair a Lithium Battery Pack with Simple ...

How to repair a lithium battery pack by troubleshooting charging, swelling, and voltage issues. Follow safe, simple steps to restore battery performance.



Contact Us

For catalog requests, pricing, or partnerships, please contact:

BLINK SOLAR

Phone: +48-22-555-9876

Email: info@blinkartdesign.pl

Website: <https://blinkartdesign.pl>

Scan QR code to visit our website:

