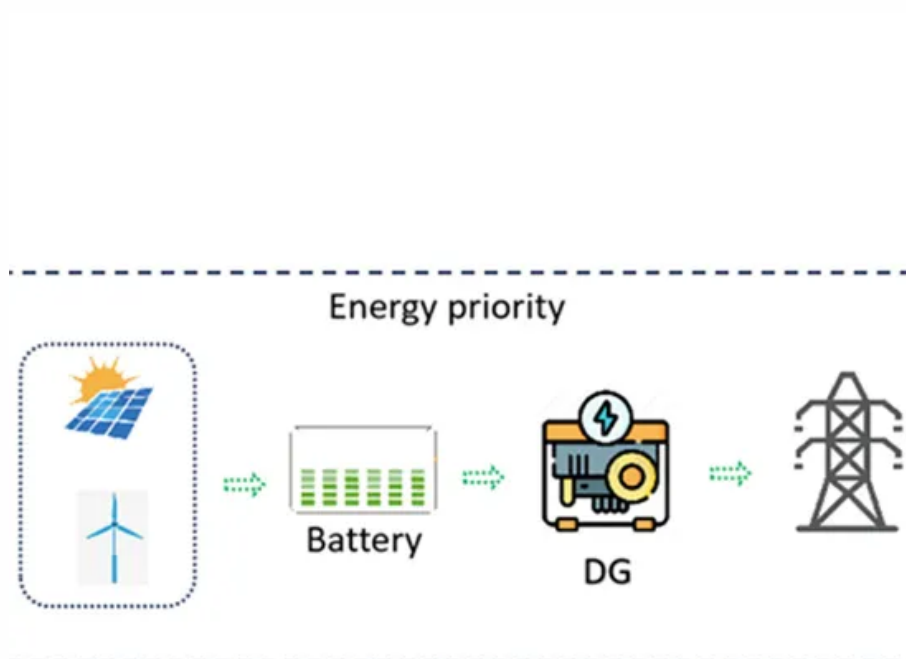


## BLINK SOLAR

# Solar inverter grid missing



## Overview

---

How do I check if my inverter is on-grid?

Step 1: Use a multimeter to measure the phase voltage and line voltage at the AC port. Ensure grid voltage is normal. Step 2: Check the system status "On-grid" information, which inverter displays on the screen. Ensure the detection of grid voltage in the inverter is normal. Settings path: About → System status → On-grid.

Why does my inverter have a no-grid fault?

The fault NO-GRID is caused by the inverter not detecting voltage at the grid. One of the main reasons this fault may appear is an incorrect grid code being set. During the units "burn" in period at the factory they are programmed with a specific grid code for the burn-in process.

Why is my solar inverter not producing power?

If your solar inverter is receiving some form of power, be it from the panels on the roof or the grid, but is not producing power, there will likely be a fault code displaying. If there is no fault code or error message displaying, it may not be an inverter fault.

How do I check if my inverter detects grid voltage?

Ensure the detection of grid voltage in the inverter is normal. Settings path: About → System status → On-grid Step 3: Upgrade the firmware version to the latest and restart the inverter and check whether the inverter recovers.

## Solar inverter grid missing

---



### Most Common Problems in On-Grid Solar Inverters

On-grid solar inverters ensure your solar power system functions smoothly. While problems with on-grid inverters are common, you can often diagnose and fix them with basic ...

### Troubleshooting Common Issues with On-Grid Inverters

On-grid inverter issues being common, this piece will identify them and present you with effective remedies to maintain the efficiency and consistency of your solar power system.



### How to fix grid lost fault? - Solax Power Help ...

Step 2: Check the system status "On-grid" information, which inverter displays on the screen. Ensure the detection of grid voltage in the ...

## SMA Sunnyboy Solar Inverter Support, Faults and Repairs

SMA SunnyBoy solar inverters have LCD displays on the front of the chassis, which providing it's working, will highlight any errors with the solar inverter or the solar PV ...

### LIQUID COOLING ENERGY STORAGE SYSTEM

EMS real-time monitoring  
No container design  
flexible site layout



Cycle Life  
**≥8000**

Nominal Energy  
**200kwh**

IP Grade  
**IP55**



## Common Solar Inverter Issues and How to Fix Them

The company designs and produces on-grid, off-grid, and hybrid solar inverters ranging from residential to commercial scale, and also provides energy storage systems and ...

## Power One / ABB Aurora Solar Inverter Missing Grid Message

The Power One / ABB Aurora Solar Inverters Missing Grid Message tells you that your inverter has not detected any electricity coming from the street. This can be caused by a ...



## Power-one/ABB Aurora missing-grid Error Code

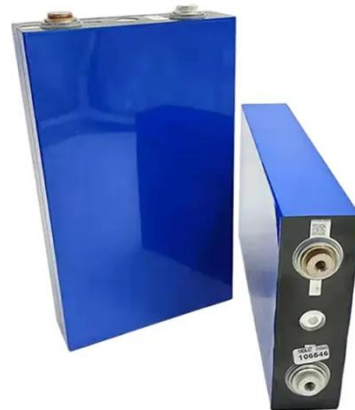
Power-one or ABB Aurora inverter displaying missing-grid? This code



means The inverter is unable to detect grid voltage at its AC output terminals, which prevents it from initiating or ...

## String inverter troubleshooting

Most household appliances, including solar inverters, have a tolerance to the fluctuation in the grid voltage. Solar inverters are typically more sensitive to this than other appliances.



## EG4 6000EX Missing Grid Connection , DIY Solar Power Forum

Woke up this morning to the system shutting down from battery depletion because the utility power is missing. Reset the 2 inverter / 8 eg4 battery system still no grid. Has ...

## NO-GRID Inverter Does Not Detect Grid : Solis North America

**Fault Description** The fault NO-GRID is caused by the inverter not detecting voltage at the grid. **Possible Causes** The inverter is not detecting any AC The incorrect grid ...



## How to fix grid lost fault? - Solax Power Help Center

Step 2: Check the system status "On-grid" information, which inverter displays on the screen. Ensure the detection of grid voltage in the inverter is normal. Settings path: About ...

## NO-GRID: No grid detected

The inverter is unable to detect the AC grid connection, as indicated by the "NO-GRID" error message on the display. This issue prevents the solar inverter from



## Contact Us

For catalog requests, pricing, or partnerships, please contact:

**BLINK SOLAR**

Phone: +48-22-555-9876

Email: [info@blinkartdesign.pl](mailto:info@blinkartdesign.pl)

Website: <https://blinkartdesign.pl>

*Scan QR code to visit our website:*

