

**BLINK SOLAR**

# Solar inverter night temperature



## Overview

---

Do solar inverters work at night?

At night, solar inverters typically do not operate; instead, they enter standby or low-power modes to conserve energy while remaining ready to resume full function when sunlight returns. Some users consider turning off their inverters at night to save energy, as they may consume minimal power in standby mode.

What is night mode on a SolarEdge inverter?

Night Mode is a function on SolarEdge inverters aimed at conserving energy and enhancing system safety. Essentially, it indicates that the rooftop solar array is not generating usable voltage, particularly after sunset. If the inverter shows Night Mode during daylight, it may indicate a connector issue or a need for technician intervention.

What happens if a PV inverter turns on in the morning?

In the evening when there are no PV power, the inverter shuts off. In the morning, the inverter turns on if Night mode is enabled, but with Night mode, the inverter turns on in the morning. All inverters draw a very small amount of power while in standby overnight. The inverter's nighttime power consumption values are available in the inverter.

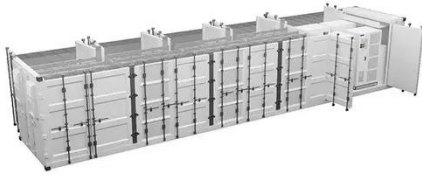
Which solar power inverter exemplifies the Q at night function?

One solar power inverter that exemplifies the benefits of the Q at Night function is Sungrow's 6.25/6.8 MVA MV Turnkey Station. Here's what makes this inverter system a standout choice for large-scale solar applications:

## Solar inverter night temperature

---

### Does a Solar Inverter Work at Night? Here's ...



Before understanding how a solar inverter works at night, it's important to know what a solar inverter does. In simple terms, a solar ...

---

### Use of solar PV inverters during night-time for voltage ...

This paper demonstrates, numerically and experimentally, the operation of a PV inverter in reactive power-injection mode when solar energy is unavailable.



---

### Does the Solar Inverter Turn Off at Night?

This article explains whether solar inverter will turn off at night, why inverter automatically enter standby or shut off mode at night due to insufficient solar voltage, and how ...



## Autarco solar inverters at night

Solar inverters at nightDo solar inverters turn off at night? The short answer is yes, but in this article, we are going to explain everything in more detail. On-grid solar inverters do ...



## Why Do Solar Inverters Have A Night Mode?

Solar inverters do not shut down completely at night, but they typically enter a standby or low-power mode to conserve energy and optimize efficiency. This standby mode ...

## Why Do Solar Inverters Have A Night Mode?

Solar inverters do not shut down completely at night, but they typically enter a standby or low-power mode to conserve energy and ...



## Winter and Solar Inverters: Does Cold Weather Impact ...

Solar energy is a reliable and sustainable power source, but many users wonder

whether cold weather affects the performance of their solar inverter. As winter arrives, ...



---

## **Does a Solar Inverter Work at Night? How to Power My ...**

Can solar inverters work at night? Discover how lithium batteries and inverters provide uninterrupted power, even after sunset.



---

## **How does a micro inverter on grid handle temperature ...**

Hey there! As a supplier of Micro Inverter On Grid, I've seen firsthand how these little powerhouses need to handle all sorts of conditions, especially temperature variations ...



---

## **Understanding the Q at Night Function in ...**

The Q at Night function allows solar power inverters to provide reactive

power support even when solar generation is not occurring. This ...

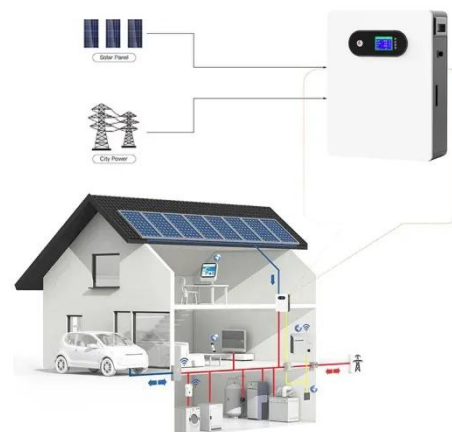


## Why Is My Off Grid Inverter Working Better at Night

At night, with solar generation paused, the off grid power inverter receives a consistent flow from the battery bank, free from these adjustments. The result is a smoother ...

## Understanding the Q at Night Function in Solar Power Inverters

The Q at Night function allows solar power inverters to provide reactive power support even when solar generation is not occurring. This capability is particularly beneficial ...



## Does a Solar Inverter Work at Night? Here's the Real Answer

Before understanding how a solar inverter works at night, it's important to

know what a solar inverter does. In simple terms, a solar inverter is a device that converts the direct ...



---

## Contact Us

For catalog requests, pricing, or partnerships, please contact:

### **BLINK SOLAR**

Phone: +48-22-555-9876

Email: [info@blinkartdesign.pl](mailto:info@blinkartdesign.pl)

Website: <https://blinkartdesign.pl>

*Scan QR code to visit our website:*

