

BLINK SOLAR

Solar panel laying mode on sloped roof



Overview

Can solar panels be installed on a sloped roof?

A roof with a slope that faces south is optimal for the installation of solar panels, but the roof structure on some homes may not be structurally sound enough to support a solar array. The installer may need to modify the roof or install the panels on a freestanding ground unit rather than on the roof.

Why should you install solar panels on a flat roof?

Optimal sunlight exposure: Solar mounting systems for flat roofs offer greater flexibility in panel tilt and direction. This allows installers to achieve the best angles for solar capture, potentially elevating efficiency over some pitched roof systems.

How do you install solar panels on a flat roof?

Ensure compliance with RC62 fire safety recommendations. Detect wildlife activity, such as bird nesting. When installing a solar panel system on a flat roof, two mounting methods are primarily used: ballasting and penetrative fixing.

Do flat roof solar panels need to be tilted?

Waterproofing: Solar installations must be designed to avoid obstructing drainage paths, as this can lead to leaks and damage. Flat-mounted panels are also prone to water pooling, which can create further load bearing issues. As such a tilt is essential to ensure water runoff. How does wind impact flat roof solar panel installation?

Solar panel laying mode on sloped roof

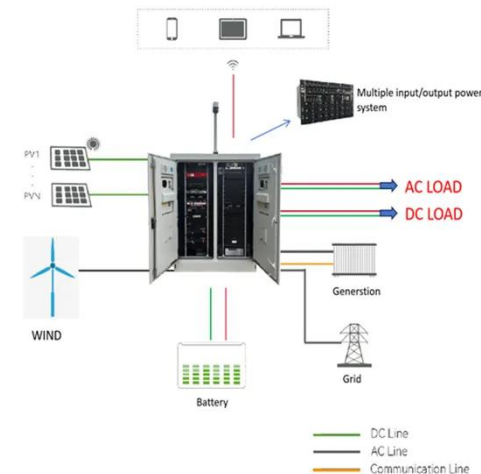


Can solar panels be installed on a sloped roof?

Whether you have an asphalt shingle roof, a tile roof, or a metal roof, we have the expertise to get the job done right. Don't hesitate to reach out and start the process of making ...

Installing Solar Panels on Flat Roofs vs.

Solar energy continues to grow in popularity for both homeowners and businesses, and you've likely seen solar panels on ...



Complete Guide: How to Install a Solar Panel on a Sloped Roof

Looking to install solar panels on a sloped roof? Discover this step-by-step guide on how to install solar panels, key considerations, and tips for a successful installation.

5 Best Solar Panel Configuration for Sloped Roof Solutions: ...

Installing solar panels on a pitched roof comes with its own set of considerations, from ensuring proper water drainage to maximizing sun exposure throughout the day. Getting the right solar ...



How to install solar energy on a sloping roof ...

To install solar energy systems on a sloping roof building, one must consider several key factors to achieve optimal efficiency and ...

Is it possible to install solar on a sloped roof ...

What if you could install traditional solar panels on a sloped roof with no penetrations? Not low-watt, adhesive modules; not flexible ...



Is It Safe to Install Photovoltaic Panels on a Sloping Roof? A

A Comprehensive Guide Imagine your roof as a ski slope - but instead of



snowboarders, it's hosting sleek photovoltaic panels harvesting sunlight. The question isn't whether solar panels

...

Can you place solar panels on a sloped roof?

Placing solar panels on a sloped roof is entirely possible and offers several advantages, including increased sun exposure, improved self-cleaning, and aesthetic appeal.



Flat Roof Solar Panel Installation Guide , Pros, Cons & Best ...

Discover the pros, cons, and best practices of installing solar panels on flat roofs. Learn optimal angles, spacing guidelines, mounting solutions, and key considerations for efficiency, ...



51.2V 300AH

Solar Panels on Flat Roof , An In-Depth Guide ...

Our guide on how to install solar panels on flat roofs safely and effectively to

maximize the amount of power generation possible from ...



How to install solar energy on a slope

Embarking on the journey to install solar energy systems on sloped surfaces entails a thoughtful blend of planning, execution, and ...

Solar Panels Vertical Or Horizontal (Which ...

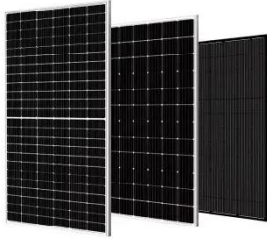
Why Horizontal Solar Panels Work If you have a flat roof, you'll want to install horizontal panels. This orientation keeps the panels flush ...



How to install solar energy on a slope , NenPower

Embarking on the journey to install solar energy systems on sloped surfaces

entails a thoughtful blend of planning, execution, and ongoing care. It is vital to evaluate the ...



Solar Panels and Flat Roofs: Benefits, ...

By installing solar panels on a flat roof, you can easily position them to face south and set them at the ideal angle, maximizing solar energy ...



Support any customization



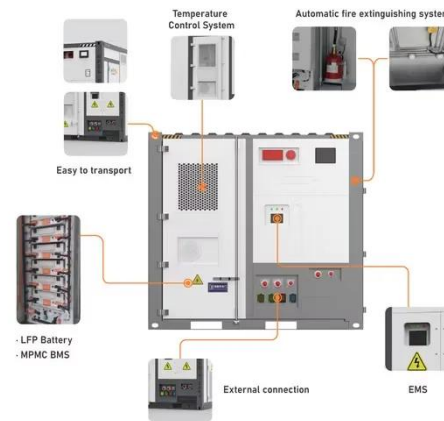
Solar panels on flat roofs: explored [UK, 2025] ...

Learn about the difficulties associated with installing solar panels on residential flat roofs, and whether there are any solutions.

Rules for Rooftop Solar

Code-expert Glenn Mathewson details the commonly encountered issues with the nonelectrical code provisions for

rooftop ...



Solar Panels On Flat Roofs

A sloped roof made of shingles needs a special solar panel shingle roof mount to safely secure the panels. Installing solar panels on a metal roof ...

Can you place solar panels on a sloped roof?

Placing solar panels on a sloped roof is entirely possible and offers several advantages, including increased sun exposure, improved ...



How to Install Solar Panels on a Sloped Roof: Step-by-Step ...

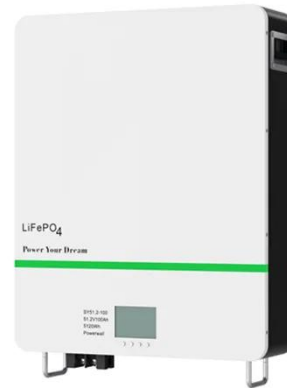
Learn how to effectively install solar panels on a sloped roof with our detailed



guide. Discover the benefits, step-by-step installation process, safety tips, and maintenance advice to maximize ...

Solar System Installation For Sloped Roofs

The cost of installing solar panels on sloped roofs depends on several factors including roof accessibility, panel type, and labor rates. While initial investments may seem high, many ...



How to install solar energy on a sloping roof building

To install solar energy systems on a sloping roof building, one must consider several key factors to achieve optimal efficiency and performance. 1. Understand the roof ...

How to Install Solar Panels on a Sloped Roof: ...

Learn how to effectively install solar panels on a sloped roof with our detailed

guide. Discover the benefits, step-by-step installation process, safety tips, ...



Photovoltaic panel laying mode on sloped roof

Instead of simply laying solar panels flat on a sloped roof, your solar installer will likely use angled mounts. These mounts tilt your solar panels, exposing them to the sun for as much of the day ...

Can you put solar panels on a flat roof? , The ...

Thinking of installing solar panels onto your flat roof? Find out everything you need to know here - from pros and cons, to optimum angels.



Contact Us

For catalog requests, pricing, or partnerships, please contact:

BLINK SOLAR

Phone: +48-22-555-9876

Email: info@blinkartdesign.pl

Website: <https://blinkartdesign.pl>

Scan QR code to visit our website:

