

**BLINK SOLAR**

# **Solar panel wattage and charging time**



## Overview

---

How long does it take to charge a solar panel?

Using the formula of solar panel charging time calculator,  $100\text{Ah}/25\text{A} = 4\text{h}$ , it suggests that it takes 4 hours to completely charge a 12-volt 100Ah battery. Similarly, with a 24V 100Ah battery, it would require 8 hours of solar panel operation to achieve a full charge. Also Read: [How Long Do Solar Lights Take to Charge?](#)

.

How do you calculate solar battery charge time?

The underlying formula for calculating solar battery charge time involves dividing the battery capacity by the solar panel's effective output (considering insolation and efficiency). Here's a breakdown: Formula: Charge Time (hours) = Battery Capacity (Ah) / (Solar Panel Wattage \* Solar Insolation \* Panel Efficiency).

How long to charge a 12V battery with 300W solar panels?

The duration to charge a 12V battery with 300W solar panels depends on the battery capacity and the solar panel current. For instance, at 6 peak hours and 25% system losses (efficiency is 75%), a single 300W solar panel can fully charge a 12V 50Ah battery in roughly 10 hours and 40 minutes. Let's understand it in detail.

How to charge a solar battery?

First of all, you need to start by converting the battery capacity of your solar battery from Ampere hours to Watt hours, ie: Watt-hours (Wh) = Amp-hours (Ah) x Voltage (V) Substituting the data gives you 960Wh for your solar battery. Then, you need to know how much you need to charge your solar battery, i.e.:

## Solar panel wattage and charging time

---

Sample Order  
UL/KC/CB/UN38.3/UL



### Solar Sizing Calculations & Worksheet: ...

In this post, we guide you through calculations for figuring out battery run time and recharge time, so you can make an informed decision.

---

### Solar Battery Charge Time Calculator

Solar Battery Charge Time Calculator  
Battery Voltage (V): Battery Capacity (Ah): Battery Type: Lead Acid Lithium (LiFePO4) Depth of Discharge (%): Solar Panel Wattage (W): ...



---

### How to Calculate Charging Time of Battery by Solar Panel: A

Discover how to accurately calculate the charging time for your battery using solar panels in this comprehensive guide. Learn about the different types of solar panels, key factors ...



## Solar Panel Charging Time Calculator , SolarMathLab

Accurately calculate how long your solar panel takes to charge a battery using panel wattage, voltage, capacity (Ah), efficiency, and daily sunlight hours. Fast, reliable solar ...

### INTEGRATED DESIGN

EASY TO TRANSPORT AND INSTALL,  
FLEXIBLE DEPLOYMENT



## Solar Battery Charge Time Calculator (12v, 24v, 48v)



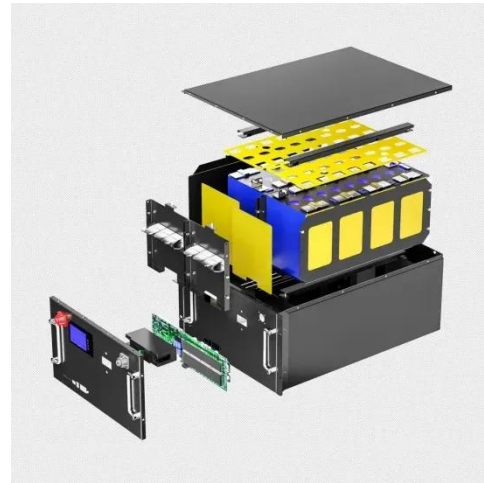
Solar Battery Charge Time Calculator  
How to Use Our Solar Battery Charge Time Calculator?  
How to Calculate Solar Panel Charge time?  
How Fast Should You Charge Your Battery?  
Why Non of The Above Methods Guarantee 100% Accuracy?  
How Long to Charge 12V Battery with Solar Panel?  
How Long to Charge 100ah Battery?  
How Long to Charge 200ah Battery?  
How Long to Charge 120ah Battery?  
How Long to Charge 50ah Battery?  
Here's a chart showing how long will it take to charge a 12v battery with different capacity lead acid and lithium batteries using 100 watt solar panel with an MPPT charge controller. See more on [dotwatts Energy Theory](#)

## Solar Panel Charging Time Calculator - Energy ...

Solar Panel Charging Time Calculator: To calculate the charging time, input panel wattage, battery Ah, and local peak sun hours.

## How Long Does It Take Solar Panel to Charge Battery: ...

Discover how long it takes for solar panels to charge a battery in this comprehensive guide. Learn about the mechanics of solar energy, factors influencing charging ...



## Solar Panel Charge Time Calculator

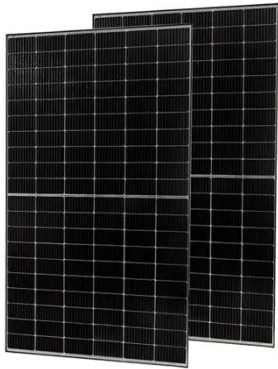
Solar panel charging harnesses the power of sunlight to convert energy into electricity, using photovoltaic cells that absorb sunlight and generate a flow of electrons. This eco-friendly ...

## Solar Battery Charge Time Calculator

The Solar Battery Charge Time Calculator determines the time required to fully charge a solar battery based on various input parameters. Its primary use is to assist in ...



## Solar Panel Charge Time Calculator: Accurately Estimate How ...



What Affects Solar Battery Charging Time? Several factors influence how long it takes a solar battery to be charged. Below are details on some of the most impactful. Panel ...

---

## How to Calculate Charging Time of Battery by Solar Panel

Key Takeaways Use the formula:  
 $\text{Charging Time} = \text{Battery Capacity (Wh)} \div \text{Solar Panel Output (W)}$  Convert battery capacity from Ah to Wh by multiplying with voltage. Factor in ...



---

## Solar Panel Charge Time Calculator

Nowadays, solar energy system has become an indispensable power generation equipment for many families, therefore, an in-depth understanding of how to calculate how ...

---

## How Many Watt Solar Panel to Charge 12V Battery: Guide to ...

...



Discover how to efficiently charge a 12V battery with solar power in our comprehensive guide. Learn the ideal solar panel wattage based on your battery's amp-hour ...

#### Lithium battery parameters

Product capacity: 100Ah

Product size: 135\*197\*35mm

Product weight: 1.82kg

Product voltage: 3.2V

internal resistance: within 0.5



---

## Contact Us

For catalog requests, pricing, or partnerships, please contact:

### **BLINK SOLAR**

Phone: +48-22-555-9876

Email: [info@blinkartdesign.pl](mailto:info@blinkartdesign.pl)

Website: <https://blinkartdesign.pl>

Scan QR code to visit our website:

