

BLINK SOLAR

Specifications and dimensions of Duodoma energy storage solar container lithium battery



Overview

Do battery energy storage systems look like containers?

C. Container transportation Even though Battery Energy Storage Systems look like containers, they might not be shipped as is, as the logistics company procedures are constraining and heavily standardized. BESS from selection to commissioning: best practices³⁸ Firstly, ensure that your Battery Energy Storage System dimensions are standard.

What energy storage container solutions does SCU offer?

SCU provides 500kwh to 2mwh energy storage container solutions. Power up your business with reliable energy solutions. Say goodbye to high energy costs and hello to smarter solutions with us.

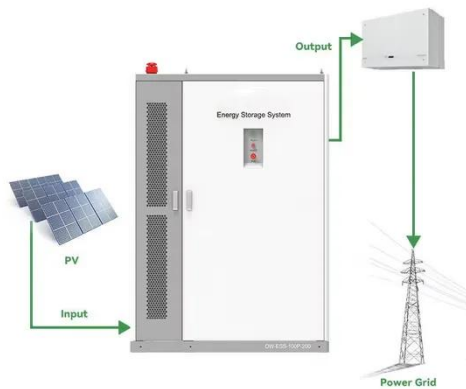
What is a 20ft 2mwh battery container?

20ft 2MWh Outdoor Liquid-Cooled Li-ion Battery Container: Advanced thermal management, weatherproof design. Ideal for renewables, grid support, and peak shaving. Maximize safety & ROI. Individual pricing for large scale projects and wholesale demands is available.

How to compare battery energy storage systems?

In terms of \$, that can be translated into \$/kWh, the main data to compare Battery Energy Storage Systems. Sinovoltaics' advice: after explaining the concept of usable capacity (see later), it's always wise to ask for a target price for the whole project in terms of \$/kWh and \$.

Specifications and dimensions of Duodoma energy storage solar con

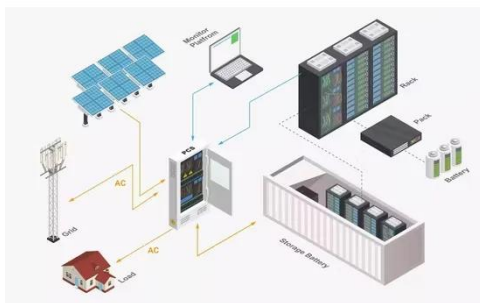


Lithium-ion Battery Storage Technical Specifications

The Federal Energy Management Program (FEMP) provides a customizable template for federal government agencies seeking to procure lithium-ion battery energy ...

Dimensions and specifications of lithium battery for ...

The Battery Energy Storage System (BESS) container design sequence is a series of steps that outline the design and development of a containerized energy storage



Battery Energy Storage System Container , BESS

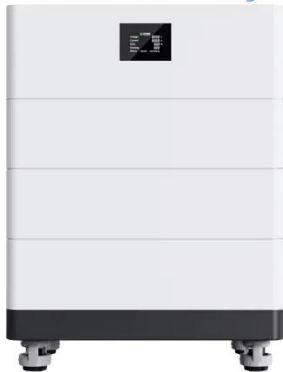
A containerized energy storage system (often referred to as BESS container or battery storage container) is a modular unit that houses lithium-ion batteries and related ...

2.7MW Energy Storage System Bess Solar Container Lithium Battery

At Tedian Energy (TNE), we go beyond delivering cutting-edge energy storage solutions. To ensure complete confidence in our products and processes, we offer Third-Party ...



High Voltage Solar Battery

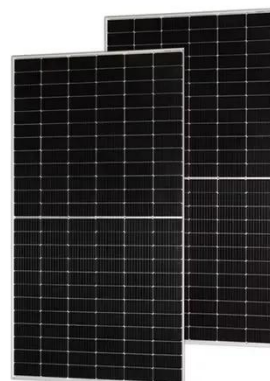


Specifications and Dimensions of Duodoma Energy Storage Lithium Battery

Understanding lithium battery specifications and dimensions helps optimize energy systems for cost and space efficiency. As renewable adoption grows, choosing the right storage partner ...

Energy storage container, BESS container

What is energy storage container? SCU uses standard battery modules, PCS modules, BMS, EMS, and other systems to form standard containers to build large-scale grid ...



Lithium Battery Storage Container



Lithium Battery Storage Container
Benwei Container Battery Our
containerised energy storage system
(BESS) is the perfect solution for large-
scale energy storage projects. ...

20ft 2MWh Outdoor Liquid-Cooling lithium ion battery storage container

20ft 2MWh Outdoor Liquid-Cooled Li-ion Battery Container: Advanced thermal management, weatherproof design. Ideal for renewables, grid support, and peak shaving. ...



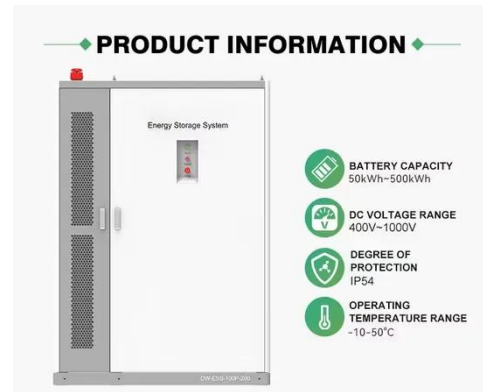
20ft 2MWh Outdoor Liquid-Cooling lithium ion battery ...

20ft 2MWh Outdoor Liquid-Cooled Li-ion Battery Container: Advanced thermal management, weatherproof design. Ideal for renewables, grid support, and peak shaving. ...

2mwh energy storage container specifications and ...

It also includes automatic fire detection

and alarm systems, ensuring safe and efficient energy management. BESS Container 500kW 2MWh 40FT Energy Storage System Solution is a ...



Contact Us

For catalog requests, pricing, or partnerships, please contact:

BLINK SOLAR

Phone: +48-22-555-9876

Email: info@blinkartdesign.pl

Website: <https://blinkartdesign.pl>

Scan QR code to visit our website:

