

BLINK SOLAR

Waveform of three-phase square wave inverter



Overview

What is a 3 phase inverter circuit diagram?

A 3 phase inverter circuit diagram converts DC voltage into balanced three-phase AC supply using six switching devices. What is a Three Phase Inverter?

A three phase inverter is an electronic power conversion device that transforms DC input voltage into a balanced three-phase AC output.

What shape do the output voltages of a three-phase inverter have?

The output voltages of a three-phase inverter have the shape of a square wave not a pure sinusoidal wave.

Does a 3 phase inverter have harmonics?

The output voltages of a three-phase inverter have the shape of a square wave, not a pure sinusoidal wave, so they include many harmonics.

What does a three-phase inverter convert?

The voltage source inverter (VSI) is a commonly used power inverter. It converts a DC voltage into a three-phase AC voltage. So a three-phase inverter is required.

Waveform of three-phase square wave inverter



Square Wave Inverter - Definition, Circuit ...

In this topic, you study Square Wave Inverter - Definition, Circuit Diagram & Waveform. Square Wave Inverter is an electrical circuit, ...

Analysis and Simulation Three-Phase Inverter

The objective of this paper is to obtain a three-phase ac square wave output, which is obtained by a 3-phase inverter. An inverter receives dc supply for its input and produces an ...

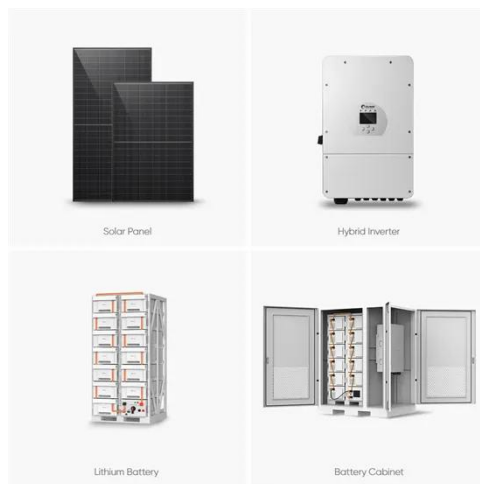


Modified square wave inverters waveform

Download scientific diagram , Modified square wave inverters waveform from publication: Development of square wave inverter using DC/DC boost ...

CHAPTER4

4.1 Introduction In this chapter the three-phase inverter and its functional operation are discussed. In order to realize the three-phase output from a circuit employing dc as the ...



Inverter Types & Working Principle , Sine Wave, Square Wave...

The article provides an overview of inverter technology, explaining how inverters convert DC to AC power and detailing the different types of inverters--sine wave, square ...

Three-Phase Inverter

A three-phase inverter is defined as a device used to convert direct current (DC) into alternating current (AC) for medium to high power applications, typically greater than 5 kW, and is ...



Three Phase Square Wave Inverter

The Three Phase Square Wave Inverter block provides bipolar 3-phase square wave output from an input frequency.



Three Phase Inverter Circuit Diagram

What is a Three Phase Inverter? A three phase inverter is an electronic power conversion device that transforms DC input voltage into a balanced three-phase AC output. ...



Modified square wave inverters waveform

Download scientific diagram , Modified square wave inverters waveform from publication: Development of square wave inverter using DC/DC boost converter , span lang="EN-US">This ...

Inverter Types & Working Principle , Sine Wave, Square ...

How Does An Inverter Work?Modular Inverters SystemSquare Wave Inverter

WorkingModified Sine Wave Inverter
WorkingSingle-Phase Sine Wave Inverter
WorkingBasic Operation of The Sine Wave InverterThree-Phase Inverter
WorkingA switching circuit is used in the conversion of DC voltage to an alternating (or bipolar) square wave voltage. One method is the use of the inverter bridge (also known as an H-bridge), which is illustrated in Figure 4. The switch symbols are used to represent switching transistors (IGBTs or MOSFETs) or other types of electronic switching devices. See more on electricalacademia



Videos of Waveform Of Three-Phase Square Wave Inverter

Watch video on mit Lecture 23: Three-Phase Inverters , Power Electronics , Electrical Engineering and Computer Science , MIT ...mit Watch video on askfilo In the three-phase, square-wave inverter of Fig. 8-24 a, consid , Filoaskfilo 5.8K views7 months agoWatch video on microcontrollerslab 7:03Three phase sine wave inverter circuit using Arduinomicrocontrollerslab Watch full videoTennessee Tech University[PDF]

CHAPTER4

4.1 Introduction In this chapter the three-phase inverter and its functional operation are discussed. In order to realize the three-phase output from a circuit employing dc as the ...

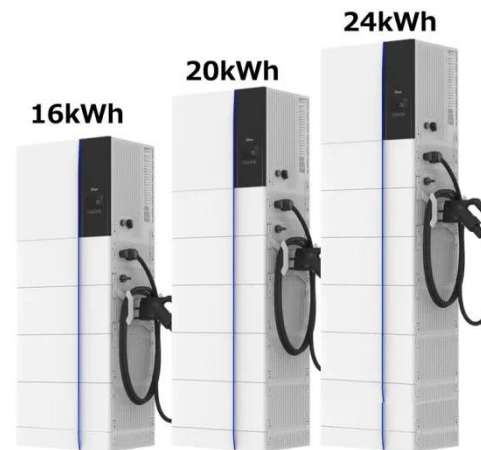
Lesson No

The three-phase square wave inverter as described above can be used to generate balanced three-phase ac voltages of desired (fundamental) frequency. However harmonic ...



Square Wave Inverter - Definition, Circuit Diagram & Waveform

In this topic, you study Square Wave Inverter - Definition, Circuit Diagram & Waveform. Square Wave Inverter is an electrical circuit, converts a fixed voltage DC to a fixed ...



Three Phase Inverter Circuit Diagram

What is a Three Phase Inverter? A three phase inverter is an electronic power conversion device that transforms DC input voltage into ...

Lecture 23: Three-Phase Inverters

The 3-phase bridge comprises 3 half-bridge legs (one for each phase; a, b, c). The devices are often traditionally

numbered as illustrated (Conveying conduction order in "square ...



Contact Us

For catalog requests, pricing, or partnerships, please contact:

BLINK SOLAR

Phone: +48-22-555-9876

Email: info@blinkartdesign.pl

Website: <https://blinkartdesign.pl>

Scan QR code to visit our website:

