

BLINK SOLAR

What is the power source of the base station s stock battery



Overview

What is base station Power?

Base station power refers to the output power level of base stations, which is defined by specific maximum limits (24 dBm for Local Area base stations and 20 dBm for Home base stations) and includes tolerances for deviation from declared power levels, as well as specifications for total power control dynamic range. How useful is this definition?

.

What is a base station & a PV powering Unit?

The base station uses radio signals to connect devices to network as a part of traditional cellular telephone network and solar powering unit is used to power it. The PV powering unit uses solar panels to generate electricity for base stations in areas with no access to grid or areas connected to unreliable grids.

How does a base station work?

Depending on the size of base station and its traffic, the base station may also have another sources of power such as a diesel generator, wind turbine or biofuels. The base station is a transceiver and acts as an interface between a mobile station and network using microwave radio communication.

What is a bank of batteries used for?

A bank of batteries are used to power the base station when the solar power is not enough at night or during the rainy and cloudy days. The batteries are also charged by solar panels when not used to provide power and its capacity depends on load, backup time of the battery, discharge depth, and safety requirements.

What is the power source of the base station s stock battery



Communication Base Station Battery in the Real World: 5 ...

As wireless communication continues to expand globally, the backbone of connectivity relies heavily on reliable power sources. Communication base station batteries ...

Overview of Telecom Base Station Batteries

Definition Telecom base station battery is a kind of energy storage equipment dedicatedly designed to provide backup power for telecom base stations, ...



Basic components of a 5G base station

Download scientific diagram , Basic components of a 5G base station from publication: Evaluating the Dispatchable Capacity of Base Station Backup Batteries in Distribution Networks , Cellular ...

Power Base Station

The transmitter characteristics define RF requirements for the wanted signal transmitted from the UE and base station, but also for the unavoidable unwanted emissions outside the transmitted ...



Optimal Electricity Dispatch for Base Stations with Battery ...

With the development of newer communication technology, considering the higher electricity consumption and denser physical distribution, the base stations become important ...

How about base station energy storage ...

How about base station energy storage batteries 1. Base station energy storage batteries play a critical role in enhancing efficiency ...



Basic components of a 5G base station

Download scientific diagram , Basic components of a 5G base station from

publication: Evaluating the Dispatchable Capacity of Base Station Backup ...

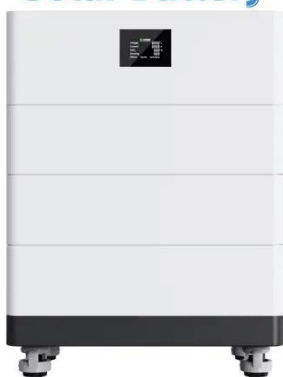


What is the purpose of batteries at telecom base stations?

The lead storage battery is the most widely used energy storage battery in the current communication power supply. Among the many types of batteries, why can lead-acid ...



High Voltage Solar Battery



What is the purpose of batteries at telecom ...

The lead storage battery is the most widely used energy storage battery in the current communication power supply. Among the ...

Uninterrupted Power for 5G Base Stations: How the 51.2V ...

With 5G base stations consuming 3-4 times more energy than their 4G

counterparts (GSMA 2023) and millions of new sites deployed annually, traditional power ...



Telecom Base Station Backup Power Solution: ...

Discover the 48V 100Ah LiFePO4 battery pack for telecom base stations: safe, long-lasting, and eco-friendly. Optimize reliability with ...

Telecom Base Station Backup Power Solution: Design Guide ...

Discover the 48V 100Ah LiFePO4 battery pack for telecom base stations: safe, long-lasting, and eco-friendly. Optimize reliability with our design guide.



Base station energy storage battery development

Meanwhile, communication base stations often configure battery energy storage



as a backup power source to maintain the normal operation of communication equipment[3,4]. ...

How about base station energy storage batteries , NenPower

How about base station energy storage batteries 1. Base station energy storage batteries play a critical role in enhancing efficiency and reliability in telecommunication ...



Overview of Telecom Base Station Batteries

Definition Telecom base station battery is a kind of energy storage equipment dedicatedly designed to provide backup power for telecom base stations, applied to supply continuous and ...



Contact Us

For catalog requests, pricing, or partnerships, please contact:

BLINK SOLAR

Phone: +48-22-555-9876

Email: info@blinkartdesign.pl

Website: <https://blinkartdesign.pl>

Scan QR code to visit our website:

