

**BLINK SOLAR**

# **What kind of equipment is a power base station**



## Overview

---

What is base station Power?

Base station power refers to the output power level of base stations, which is defined by specific maximum limits (24 dBm for Local Area base stations and 20 dBm for Home base stations) and includes tolerances for deviation from declared power levels, as well as specifications for total power control dynamic range. How useful is this definition?

.

What equipment is used in a power plant?

The following points highlight the seven important electrical equipment used in power plants. The equipment are: 1. Excitation Systems 2. Excitation Control 3. Automatic Voltage Regulators 4. Control Room 5. Plant Instrumentation 6. Plant Layout 7. Auxiliary Switchgear in Power Stations. 1. Excitation Systems:.

What are the components of a base station?

The base station will have one or more RF antennas installed to transmit and receive RF signals from other devices. The block diagram of a base station typically includes the following key components: Baseband Processor: The baseband processor too deals with different communication protocols and interfaces with mobile network infrastructure.

What is a base station & a PV powering Unit?

The base station uses radio signals to connect devices to network as a part of traditional cellular telephone network and solar powering unit is used to power it. The PV powering unit uses solar panels to generate electricity for base stations in areas with no access to grid or areas connected to unreliable grids.

## What kind of equipment is a power base station

---

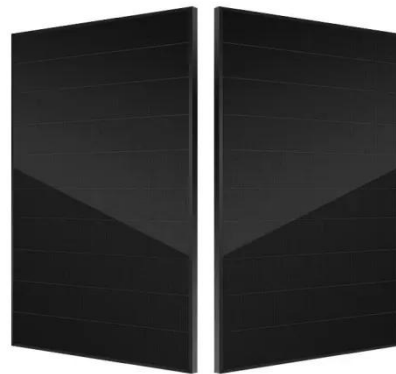


### What kind of equipment is the energy storage power station?

In summary, the equipment utilized within energy storage power stations comprises a range of specialized technologies that are crucial for effective energy ...

## WHAT KIND OF POWER SUPPLIES DO YOU GUYS USE FOR BASE STATION

What is wind power and photovoltaic power generation in communication base stations Hybrid energy solutions enable telecom base stations to run primarily on renewable energy sources, ...



### Different English Terms for Telecom Base Station Power ...

Understand the different English terms for telecom base station power systems, including Telecom Base Station Power System, Cell Tower Energy Solution, Base Station ...

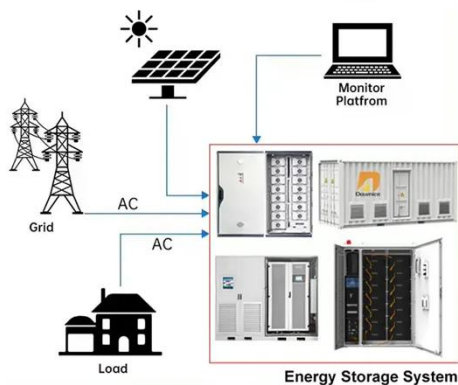


## Electrical Equipment Used in Power Plants

The following points highlight the seven important electrical equipment used in power plants. The equipment are: 1. Excitation Systems 2. Excitation Control 3. Automatic Voltage ...



### DISTRIBUTED PV GENERATION + ESS



## Major Electrical Equipment in a Power Station: A ...

The efficiency, reliability, and safety of power stations heavily depend on a wide range of electrical equipment. Each piece of equipment plays a specific role in the generation, ...

## What Is a Power Station and How Does It Work for Everyday ...

So, what is a power station? It's more than just a battery--it's a reliable source of backup power, a travel companion, and a step toward energy independence. By storing ...



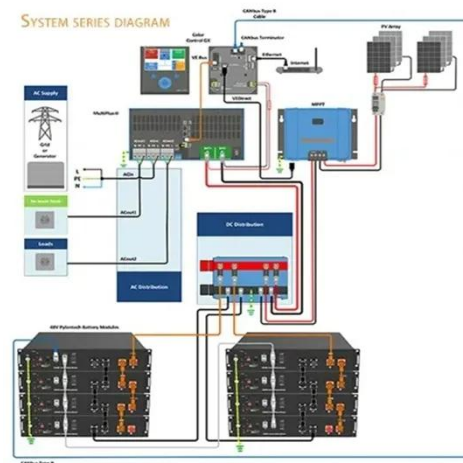
## What Does a Base Station Do and Why Is It Essential for ...



Base stations not only enable today's communication, but also pave the way for tomorrow's networks--supporting higher speeds, lower latency, and new services. At ...

## Base Stations

**Power Supply:** The power source provides the electrical energy to base station elements. It often features auxiliary power supply mechanisms that guarantee operation in ...



## Power Station

**1 Introduction** Power stations are complex arrangements of individual plant items, equipment and mechanical and electrical engineering systems. The term 'station' in its widest ...



## Contact Us

For catalog requests, pricing, or partnerships, please contact:

**BLINK SOLAR**

Phone: +48-22-555-9876

Email: [info@blinkartdesign.pl](mailto:info@blinkartdesign.pl)

Website: <https://blinkartdesign.pl>

*Scan QR code to visit our website:*

