

BLINK SOLAR

What size inverter is suitable for 100ah lithium iron phosphate battery



Overview

Can a 100Ah battery be a 24V inverter?

Most 100Ah batteries are 12V, but some systems may use 24V. Your inverter must match your battery voltage (e.g., 12V inverter for a 12V battery). 2. Power Rating of the Inverter (Wattage) Inverters are rated by their continuous power output in watts (W). The right inverter size depends on how much power your appliances draw.

How to choose an inverter for a 100 Ah battery?

When picking an inverter for your 100ah battery, it's best to choose a pure sine wave inverter. This type of inverter gives a steady power output, similar to what you get from the electricity grid. This clean power is safer for your appliances and makes them work their best.

Can I use a 2000 watt inverter with a 100 watt battery?

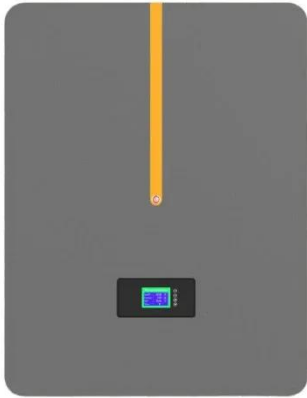
Yes, you can use a 2000 watt inverter with a 100ah battery. But if you use 2000 watts from your 12v 100ah battery, it will use up the battery faster and over time, it will also shorten the battery's life. Can I use a 1500W inverter with a 100Ah battery?

Yes, you can use a 1500 watt inverter with a 100ah battery.

How do I match my inverter with a 100Ah battery?

To match your inverter with a 100Ah battery, several factors must be considered. Inverters are rated based on continuous power and surge power. Continuous power is the amount of power the inverter can supply continuously without overheating or damage. Surge power refers to the short-term power needed to start appliances with high startup currents.

What size inverter is suitable for 100ah lithium iron phosphate batt



How to Determine the Right Inverter Size for a 100Ah Battery

Determining the right inverter size for a 100Ah battery is essential for ensuring optimal performance and efficiency in your power system. The inverter must match the power ...

What size inverter can I run off a 100Ah lithium battery?

A 100Ah lithium battery can typically support an inverter up to 1,200W for 1 hour, assuming a 12V system. Actual runtime depends on load wattage and battery voltage.



What Size Inverter for 100Ah Battery? - MWXNE POWER

Choosing the wrong size inverter can damage equipment, drain your battery too fast, or shut down your system unexpectedly. In this guide, we'll walk you through what size ...

Best Inverters Compatible With 100Ah Battery ...

Lithium Iron Phosphate (LiFePO4) batteries require inverters with suitable charging protocols and BMS communication ports for ...



What Inverter Size is Best for a 100Ah Battery?

A 12V 100Ah battery can reasonably power an inverter up to 1000W-1200W for short periods. For continuous loads, 500W-800W is more efficient and battery-friendly.

Sizing the Right Inverter for 100ah Battery

In this guide, I will walk you through the process of sizing the right inverter for a 100ah battery along with an inverter size chart.



Best Inverter For 100ah Battery [Updated On

Many users assume that any inverter can handle a 100Ah lithium battery, but



my extensive testing showed otherwise. I've compared several models, scrutinizing

How to Determine the Right Inverter Size for ...

Determining the right inverter size for a 100Ah battery is essential for ensuring optimal performance and efficiency in your power system. The ...



Best Inverters Compatible With 100Ah Battery for RVs, Solar, ...

Lithium Iron Phosphate (LiFePO4) batteries require inverters with suitable charging protocols and BMS communication ports for optimal performance. AGM and lead-acid ...



What Size Inverter for 100AH Lithium Battery?

Optimizing inverter size for a 100AH lithium battery requires careful

consideration--discover key factors that influence efficiency and ...



Sizing the Right Inverter for 100ah Battery

In this guide, I will walk you through the process of sizing the right inverter for a 100ah battery along with an inverter size chart.

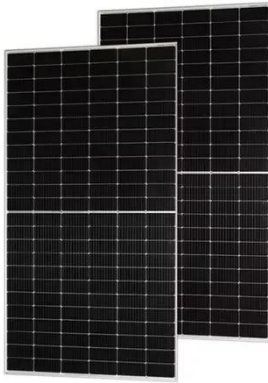
What Size Inverter for 100AH Lithium Battery?

Optimizing inverter size for a 100AH lithium battery requires careful consideration--discover key factors that influence efficiency and performance.



What Size Inverter Can I Run Off a 100Ah Battery? A ...

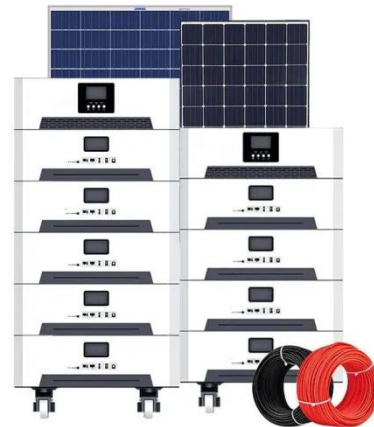
When selecting an inverter to pair with a 100Ah battery, it's crucial to understand



the power requirements of your appliances and the capabilities of your inverter. The right ...

What Size Inverter Do I Need for a 100Ah Battery?

A 100Ah battery typically supports an inverter size up to about 1000 watts for standard applications, balancing efficient runtime and battery health. Selecting the right ...



Contact Us

For catalog requests, pricing, or partnerships, please contact:

BLINK SOLAR

Phone: +48-22-555-9876

Email: info@blinkartdesign.pl

Website: <https://blinkartdesign.pl>

Scan QR code to visit our website:

