

BLINK SOLAR

Where is the Gaborone power system base station



Overview

Where is electricity generated in Gaborone?

Electricity generation has developed from a small oil-fired power station in Gaborone, commissioned in 1970 and dismantled in 1989, to two thermal power stations at Morupule, near Palapye. The Corporation also has two small standby diesel-fueled power stations at Orapa (90MW) and Matshelagabedi (70MW) to supplement generation if needed.

Where is a thermal power station located in Gaborone?

The Corporation, within the forty-eight years of its existence, has developed from a small, oil-fired power station in Gaborone which was commissioned in 1970 and dismantled in 1989 to one Thermal Power Station at Morupule situated some twelve kilometres west of Palapye village in the Central District.

What is a power station based in Gaborone & Morupule & Selebi-Phikwe?

The Corporation, within the twenty-three years of its existence, has developed from a small, oil-fired power station in Gaborone (which was commissioned in 1970 and dismantled in 1989) to better and more efficient thermal power stations in Selebi-Phikwe and Morupule using locally mined coal.

Where is the railway station in Gaborone Botswana?

The railway station in Gaborone, Botswana is located at Plot 7 Station, Gaborone, Botswana.

Where is the Gaborone power system base station



Botswana's power sector infrastructure , African Energy

Revised in April 2025, this map provides a detailed view of the power sector in Botswana. The locations of power generation facilities that are operating, under construction ...

BOTSWANA POWER CORPORATION in GABORONE

BOTSWANA POWER CORPORATION is headquartered in GABORONE : The Business report also list branches and affiliates in Botswana. Botswana Company Registry : Registration ...



Botswana Power Corporation BPC Contacts, ...

The Corporation, within the forty-eight years of its existence, has developed from a small, oil-fired power station in Gaborone which was ...



WHERE IS A THERMAL POWER STATION LOCATED IN GABORONE

Where is the sdic power energy storage station The Lianghekou mixed pumped-storage power station over the Yalong River, the largest of its kind in the world, broke ground on Dec 29, ...



- ☒ IP65/IP55 OUTDOOR CABINET
- ☒ IP54/55
- ☒ OUTDOOR ENERGY STORAGE CABINET
- ☒ OUTDOOR BATTERY CABINET

Botswana's power sector infrastructure

Revised in April 2025, this map provides a detailed view of the power sector in Botswana. The locations of power generation facilities ...

The Transmission Grid

The SCADA System: The grid is operated and maintained by BPC through a computer- based Supervisory Control and Data Acquisition (SCADA) system.The Corporation ...



Botswana Power Corporation BPC Contacts, Address

The Corporation, within the forty-eight years of its existence, has developed

from a small, oil-fired power station in Gaborone which was commissioned in 1970 and dismantled in 1989 to one ...



Botswana Power Corporation Gaborone

What hotels, hostels and apartments are located near Botswana Power Corporation? List of nearest hotels:
Gaborone Hotel two stars hotel located at 37799, Bus Rank, 654 meters north.
...



WHERE IS GABORONE LOCATED

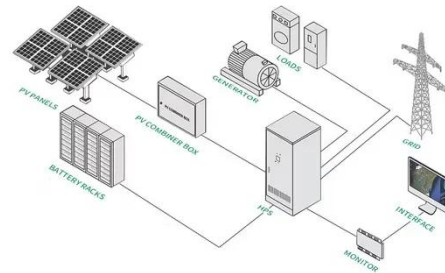
Where is the sdic power energy storage station The Lianghekou mixed pumped-storage power station over the Yalong River, the largest of its kind in the world, broke ground on Dec 29, ...



Global Smart Energy Federation

Botswana Power Corporation (BPC)
Botswana Power Corporation (BPC) is a state-owned entity created by Act of

Parliament in 1970. BPC is ...

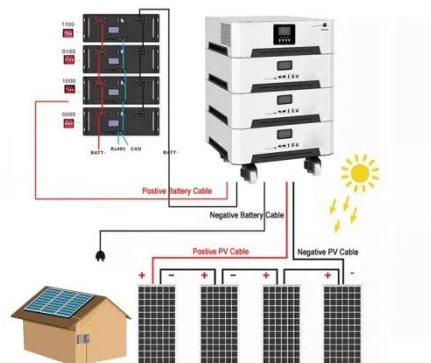


Global Smart Energy Federation

Botswana Power Corporation (BPC)
Botswana Power Corporation (BPC) is a state-owned entity created by Act of Parliament in 1970. BPC is responsible for generating, transmitting and ...

BOTSWANA : ELECTRICITY

The Corporation, within the twenty-three years of its existence, has developed from a small, oil-fired power station in Gaborone (which ...



BOTSWANA : ELECTRICITY

The Corporation, within the twenty-three years of its existence, has developed from a small, oil-fired power station in



Gaborone (which was commissioned in 1970 and dismantled ...

Contact Us

For catalog requests, pricing, or partnerships, please contact:

BLINK SOLAR

Phone: +48-22-555-9876

Email: info@blinkartdesign.pl

Website: <https://blinkartdesign.pl>

Scan QR code to visit our website:

