

**BLINK SOLAR**

# **Which is the cheapest solar glass for terrace in New Zealand**



## Overview

---

Should you choose double or triple glazing for Your New Zealand home?

When building or renovating a modern New Zealand home, glazing choices extend far beyond simply selecting double or triple glazing. Today's glass options have evolved significantly to meet the demands for energy efficiency, occupant comfort, safety, and durability, while adhering to the requirements of the New Zealand Building Code.

What is the best low E solar control glass?

While SunX™ Grey Low E is our highest solar control glass, perfect for hot and sunny locations and rooms that experience glare. Crafted for New Zealand conditions: Our selection of Low E glass is tailored to suit New Zealand conditions, offering a range of performance benefits to cater to your needs.

Which solar control glass is best?

SolarPro™ Plus Low E with a grey colour tone, perfect for creating privacy and reducing glare. See below for more information on our product range. Metro's solar control glass has a special coating which prevents excess heat from building up inside during summer months, plus retains warmth during winter.

What is solar control glass?

Metro's solar control glass has a special coating which prevents excess heat from building up inside during summer months, plus retains warmth during winter. Achieve solar control with our smart solar low e double glazing keeping you warm in winter and cool in summer and reducing your power bills.

## Which is the cheapest solar glass for terrace in New Zealand

---



### **Solar Control Glass , Smart Solar Windows , Metro**

Achieve solar control with our smart solar low e double glazing keeping you warm in winter and cool in summer and reducing your power bills.

---

## **How to Choose Solar Glass: A Complete Buying Guide for 2024**

Learn what to look for in solar glass, including efficiency, durability, and cost factors. Make an informed decision with this expert buying guide.



---

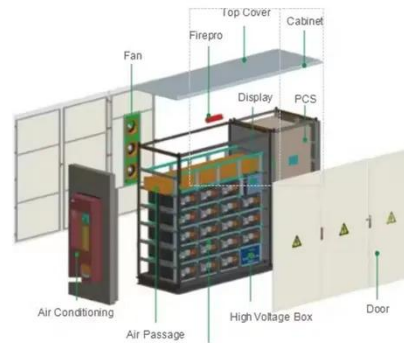
### **Photovoltaic Glass , Thermosash Building Envelope Solutions**

Thermosash offer specialist building envelope and facade solutions from concept to completion. Unitised curtainwalls, commercial aluminium windows and doors, solar shading and integrated ...



## Photovoltaic Glass , Glass Projects

Pro Photovoltaic glass from Glass Projects encompasses a range of advanced glazing units that incorporate solar photovoltaic (PV) cells directly within the glass construction. This technology ...



## Mysolarquotes charts costs of solar and batteries in New Zealand...

After surveying almost 100 New Zealanders about their solar and battery installs, Mysolarquotes recently released 'The Hidden Costs of Solar and Battery Systems in New ...

## Solar Sunroom , Solar Glass/Facade

The solar glass and facade is a great alternation for traditional glass building materials. Aesthetically pleasing and built to meet architectural requirements, making it ...



## Choosing the Right Glass for New Zealand Homes

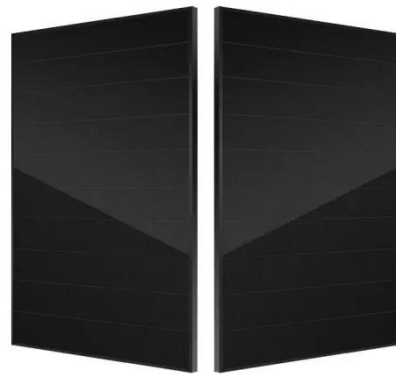


Why Glazing Matters in Modern Builds  
When building or renovating a modern New Zealand home, glazing choices extend far beyond simply selecting double or triple glazing. Today's ...

---

## Compare NZ Solar Deals by Installer and Price

Choosing the right solar installer in New Zealand is as crucial as selecting the right solar system. With various providers offering different packages, pricing structures, and levels ...



---

## Low E Double Glazing Glass Range

While SunX(TM) Grey Low E is our highest solar control glass, perfect for hot and sunny locations and rooms that experience glare. Crafted for New Zealand conditions: Our selection of Low E ...

---

## Contact Us

For catalog requests, pricing, or partnerships, please contact:

**BLINK SOLAR**

Phone: +48-22-555-9876

Email: [info@blinkartdesign.pl](mailto:info@blinkartdesign.pl)

Website: <https://blinkartdesign.pl>

*Scan QR code to visit our website:*

